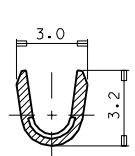
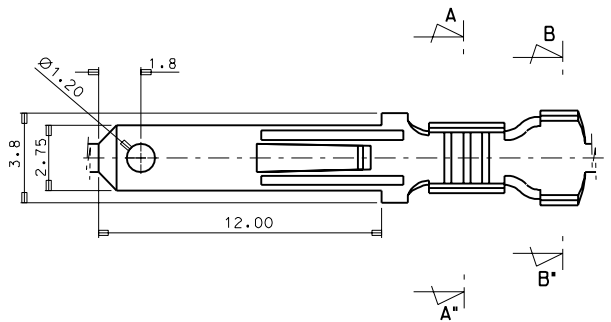
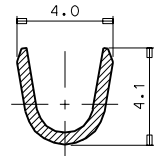


DO NOT SCALE DRAWING DIMENSION IN METRIC

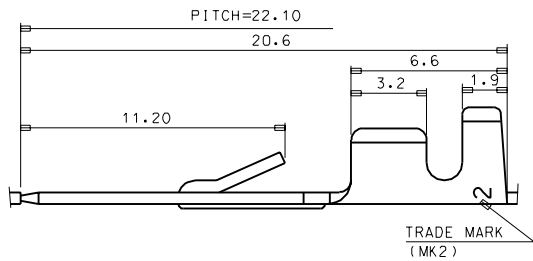
PROJECT NO. SIMILAR ITEM EDP. NO. ENG. NO. SD 35711-02-0



SECTION A-A



SECTION B-B



- NOTES
1. MATERIAL: BRASS, 0.5 THICKNESS
 2. FINISH: 35711-0200: UNPLATED
35711-0210: POST-TIN PLATED
 3. RECOMMENDED LENGTH OF WIRE STRIP IS 4.5-5.0mm

| | | | | | | | | |
|-------------|-----------------|------------------|------------------|--|-----------|-----------------------------|---------------------------|-------|
| ASS'Y PART | | QTY/REEL OR PACK | SURFACE AREA | MATERIAL | SEE NOTES | WIRE RANGE | GENERAL TOLERANCES | |
| DESCRIPTION | ENG. NO. | 10,000 QTY/REEL | MM ² | DIMENSION CLASSIFICATION | | AWG: #20-#16 | DIM. : ±0.30 | |
| --- | --- | DIE NO. | LAYOUT NO. | <input checked="" type="checkbox"/> : CRITICAL <input type="checkbox"/> : MAJOR <input type="checkbox"/> : MINOR | | MM ² : 0.52-1.31 | ANGLE : ±0.20 | |
| --- | | WIRE CRIMP WIDTH | INS. CRIMP WIDTH | DRAWN BY | CHK'D BY | INSULATION RANGE | REVISE ONLY ON CAD SYSTEM | |
| --- | | --- | --- | W.Y. YANG | B.K. CHOI | --- | TITLE: .110 SLIP-IN TAB | IOF 1 |
| LTR | REVISION RECORD | WBDW | IBDW | APP'D BY | SCALE | ∅1.8-2.3 | ENG. NO. SD 35711-02-0 | REV A |
| 8 | 7 | 6 | 5 | 4 | 3 | 2 | MK-9 | |