

FRAMELESS WINDOW KIT

BUL10294

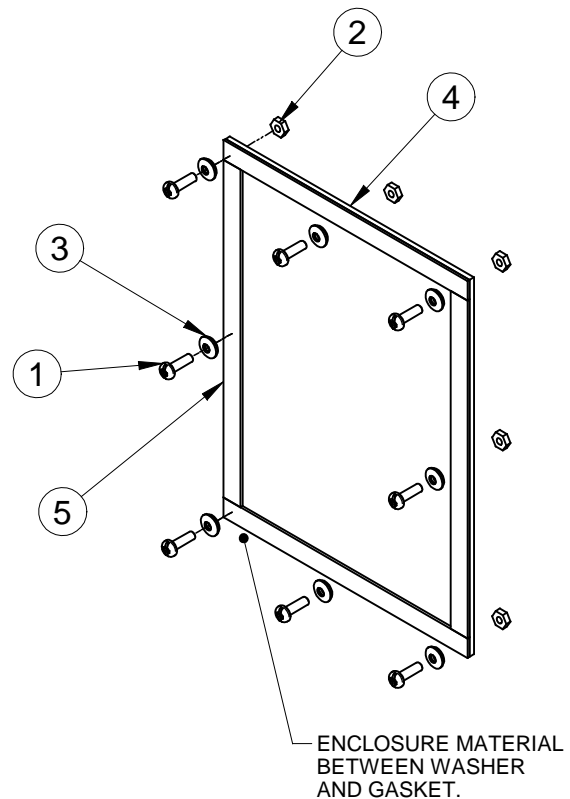
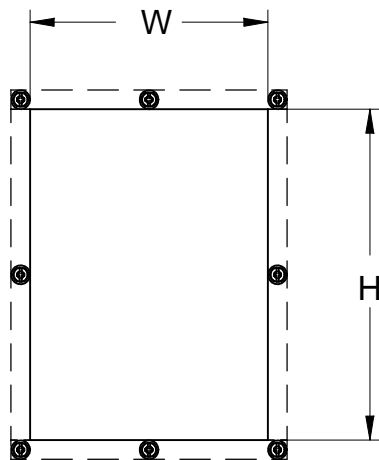
REV. A

ASSEMBLY INSTRUCTIONS FOR FRAMELESS WINDOW KITS (1481WFL52, 1481WFL133, & 1481WFL96)

INSTRUCTIONS :

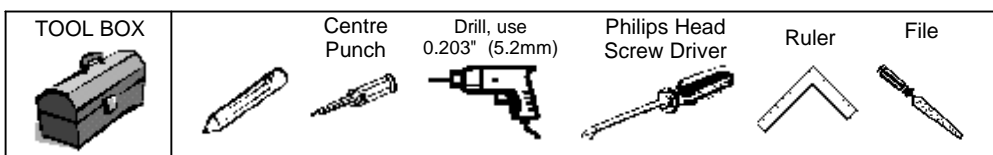
- A) LOCATE WINDOW IN DESIRED LOCATION.
- B) USE WINDOW AS TEMPLATE FOR MARKING CUTOUT LOCATION. MARK AROUND OUTSIDE OF SHEET, THEN OFFSET 1/2" (12.7mm) AND REMARK. (USE CHART TO CONFIRM CUTOUT SIZE) CUTOUT SHOULD BE 1" LESS THAN SHEET SIZE.
- C) OFFSET OUTSIDE MARK 1/4" (6.4mm) AND MARK HOLE LOCATIONS (EVENLY SPACED) AROUND PERIMETER. THE NUMBER OF HOLES SHOULD MATCH THE AMOUNT OF SCREWS IN THE KIT.
- D) DRILL (13/64" / 5.2mm) HOLES AND CUT WINDOW OPENING.
- E) FILE SHARP EDGES OF CUTOUT, AND TOUCH UP THE PAINT IF REQUIRED. (EDGE WILL BE EXPOSED ONCE COMPLETE)
- F) REMOVE BACKING ON DOUBLE-SIDED TAPE AND INSTALL WINDOW INTO PLACE.
- G) USING PREDRILLED HOLES AS A GUIDE, DRILL (13/64" / 5.2mm) HOLES THROUGH PLASTIC WINDOW.
- H) INSTALL FASTENERS.

ITEM #	DESCRIPTION
1	SCREW 10-32 X 5/8 PH PAN ZP
2	NUT 10-32 HEX ZP
3	M10 Washer/ Neoprene Seal
4	1/8" Polycarbonate Window
5	Double Sided Tape



PART NUMBER	CUTOUT SIZE [IN]		NUMBER OF SCREWS
	H	W	
1481WFL52	4.50	2.00	6
1481WFL133	12.88	2.88	10
1481WFL96	8.62	6.19	8

PART SHOWN -



**HAMMOND
MANUFACTURING™
ENCLOSURES**