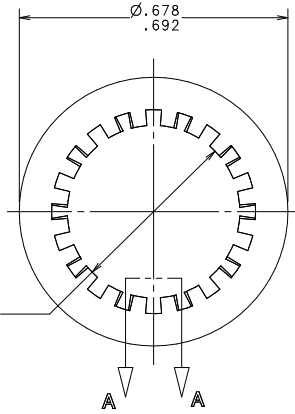
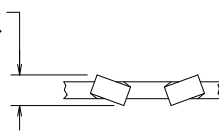


Ø .440 I.D.  
.452



.030  
MIN.



**SECTION A-A**  
TOOTH DETAIL  
SCALE 10=1

UNLESS OTHERWISE SPECIFIED, DIMENSIONS DO NOT INCLUDE PLATING.

CPK DENOTES CRITICAL CHARACTERISTICS.

CPK DENOTES CPK DIMENSIONS - MINIMUM CPK VALUE

DENOTES A CHARACTERISTIC THAT PROVIDES AN INDICATION OF THE TESTING TO BE USED FOR MEASUREMENT OF THIS CHARACTERISTIC. THE TESTING TO BE USED IS IDENTIFIED IN THE TOLERANCE SPECIFICATION INSTRUCTIONS.

DENOTES CP DIMENSIONS - MINIMUM CP VALUE (CPK) BE WITHIN THE DIMENSIONAL LIMITATIONS FOR THE DIMENSIONAL TOLERANCE LOCATED TO THE DIMENSIONAL TOLERANCE FOR MAXIMUM TOOL LIFE.

NO	COMPONENT NO	DESCRIPTION	QTY/M	U/M
4				
3				
2				
1				

**BILL OF MATERIAL**

CDPIES TO	MATL SPEC	STEEL	FINISH	NICKEL PLATE	
1	9 18	DRW	KAM	SCALE	4:1
2	10 19	DATE	11/5/97	SUPER DRW	
3	12 20	CHK	DATE	RAW STK WT	LBS/M
4	13 21	APPD	DATE	TOLERANCE UNLESS OTHERWISE SPECIFIED	
5	14 23			TWO PLACE DEC ±.01	
6	15 33			THREE PLACE DEC ±.005	
7	16 43			ANGULAR ±1°	
8	17 53				

**TITLE**

INTERNAL LOCKWASHER (7/16)

CHK APD

DES PLAINES, ILL INOIS 60016  
**Litefuse**  
DRAWING NO. -905-041

HEBARD  
C

HEBARD  
DRAWING NO.

UNCONTROLLED DOCUMENT