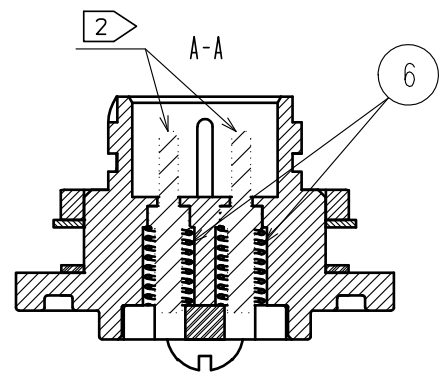
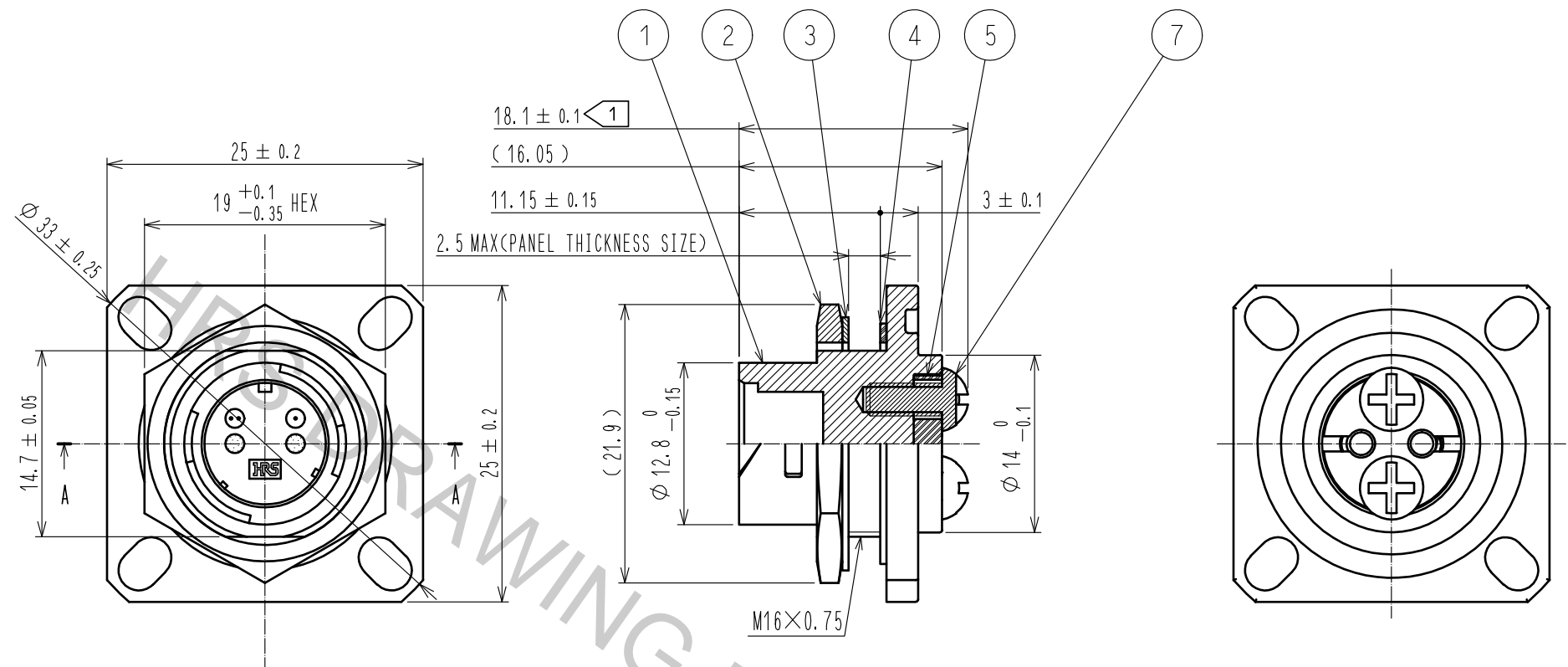
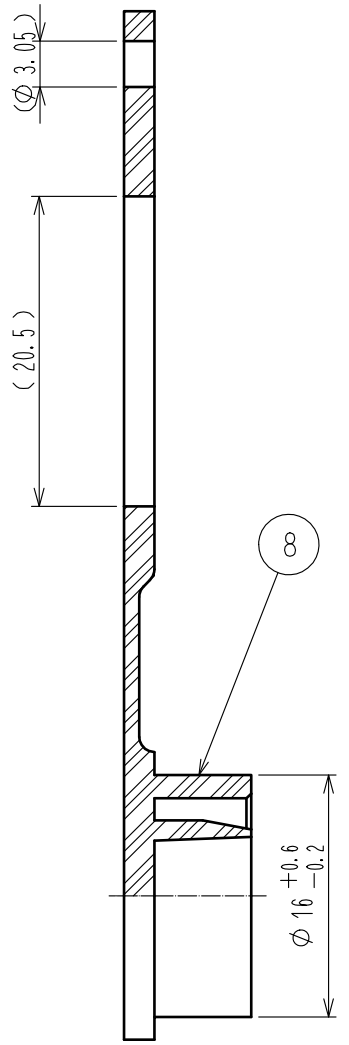
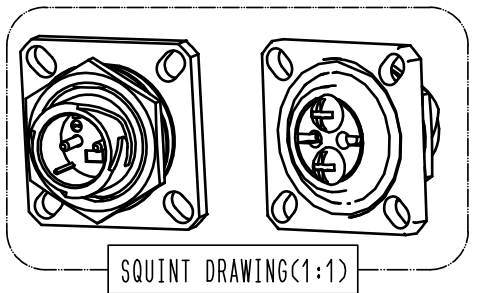
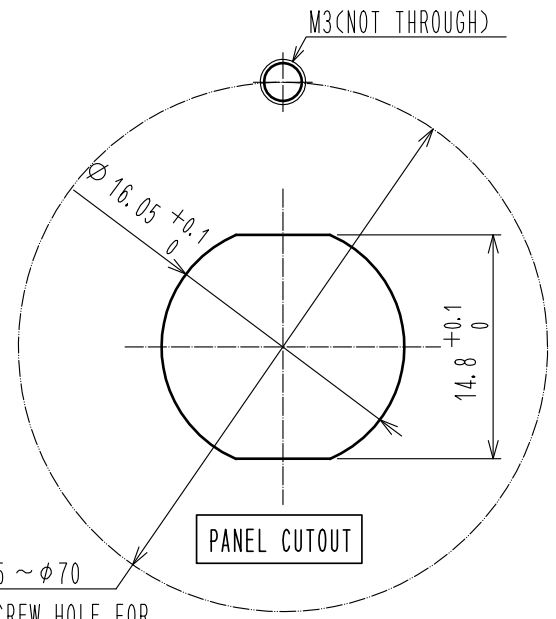


Aug.1.2018 Copyright 2018 HIROSE ELECTRIC CO., LTD. All Rights Reserved.
 In case that the application demands a high level of reliability, such as automotive,
 please contact a company representative for further information.



注 ① THESE DIMENSIONS INDICATE THE CONDITION AFTER CABLE ASSEMBLY.
 ② FERRULES ARE NOT INCLUDED IN THIS PRODUCT. MU FERRULES ARE SEPARATELY AVAILABLE.
 ③. RECOMMENDED TIGHTENING TORQUE IS 3.0N · m OF REF. 2.



4	SYNTHETIC RUBBER		8	SYNTHETIC RUBBER			
3	BRASS	TRIVALENT CHROME PLATING	7	STAINLESS STEELS			
2	BRASS	TRIVALENT CHROME PLATING	6	PIANO WIRE	ZINC PLATING + BAKING		
1	ZINC DIE CASTING	TRIVALENT CHROME PLATING	5	SYNTHETIC RESIN			
NO.	MATERIAL	FINISH . REMARKS	NO.	MATERIAL	FINISH . REMARKS		
UNITS		SCALE	COUNT	DESCRIPTION OF REVISIONS	DESIGNED	CHECKED	DATE
mm		2 : 1					
APPROVED : MT. SHIBUTANI 18.03.29				DRAWING NO. EDC-177316-31-00			
CHECKED : MT. SHIBUTANI 18.03.29				PART NO. MF10B-WRBT01-0200(31)			
DESIGNED : SI. MATSUMOTO 18.03.29				CODE NO. CL709-1030-1-31			
DRAWN : SI. MATSUMOTO 18.03.29							