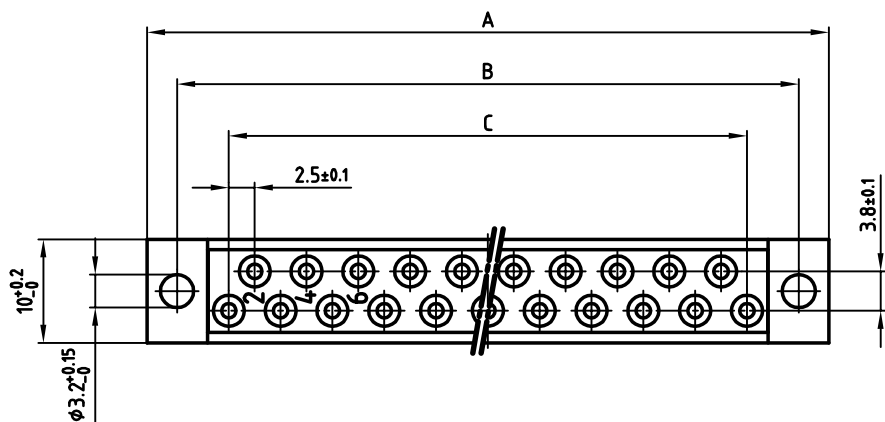
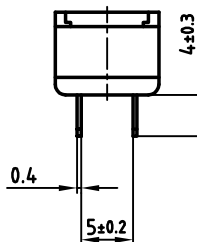
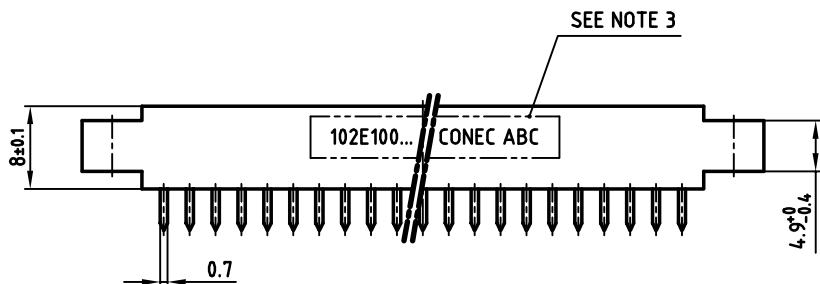
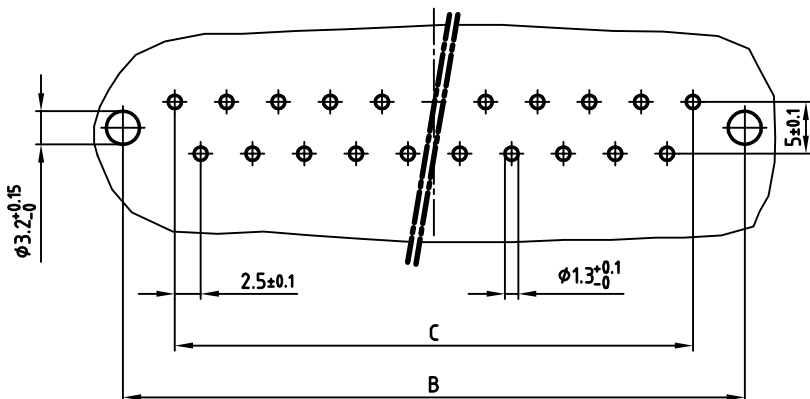


used for: DIN 41617

Polzahl No. of pos.	A ±0.2	B ±0.1	C ±0.1	Art.-Nr. Part-No.
13	45.8	40	12x2.5=30	102E10049X
21	65.8	60	20x2.5=50	102E10069X
31	90.8	85	30x2.5=75	102E10089X



Leiterplattenbohrbild  
P.C.B.-HOLE DRILLINGS



NOTES:

- INSULATOR: PC GF UL 94 V-0, GREY
- CONTACTS: COPPER ALLOY  
PLATING: HARD SILVER PLATED  
500 MATING CYCLES
- CONNECTOR IS PART MARKED: PART-NO CONEC ABC

Directive 2002/95/EC  
„RoHS“  
Compliant

APPROVAL \* FREIGABE \* DEBLOCAGE \* AUTORIZACION \* APPROVAL

CUSTOMER APPROVAL DATE:

---

NAME: TITLE:

---

COMPANY NAME:

APPROVAL \* FREIGABE \* DEBLOCAGE \* AUTORIZACION \* APPROVAL

THIS DRAWING MAY NOT BE COPIED OR REPRODUCED IN ANY WAY, AND MAY NOT BE PASSED ON TO A THIRD PARTY, WITHOUT WRITTEN PERMISSION. OWNERSHIP AND COPYRIGHT OF CONEC GmbH DO NOT ALTER CAD DRAWING BY HAND

rev.	description	date	name
1 x b	Ä3723	18.08.2010	K.H.
a			

tolerance	dim. in mm
2008	date
drawn	19.08. Sonnenberg
appd.	19.08. Mickenbecker
norm	DIN 41617
d-old	

scale: 2:1

material: SEE NOTES

title: **FEMALE CONNECTOR**  
13pos. - 31pos.  
with straight solder pins

dwg no: AutoCAD 2006 DIN-A  
3 sh: 1/1

part no: **10K2A002**

SEE TABLE