

ATLANTIC VERSION TERMINATOR INTERFACE ADAPTER	PART NUMBER	REVISION	DESCRIPTION	FEED TYPE	APPLICATOR STYLE CONVERSION CHART						
					CONVERT TO	PART NUMBERS REQUIRED					
	2266479-2	A	FINE CRIMP HEIGHT ADJUST	PNEUMATIC	-	-	-	-	-	-	
					SERVO LATCH PLATE	2119951-1	1901697-1	8-2266479-5	-	-	2168400-7 (QUANTITY 2)
					SMART APPLICATOR	2161326-1	-	8-2266479-4	-	-	-
	2266479-5	A	FINE CRIMP HEIGHT ADJUST	SERVO LATCH PLATE	-	-	-	-	-	-	-
					PNEUMATIC FEED	2119950-1	2119792-2	-	2119641-1	-	2063440-3
	2266479-6	A	NON-CRIMP HEIGHT ADJUST	SERVO LATCH PLATE	-	-	-	-	-	-	-
	2266479-7	A	FINE CRIMP HEIGHT ADJUST	NONE	-	-	-	-	-	-	-
7-2266479-7	A	CRIMP TOOLING KIT	-	-	-	-	-	-	-	-	

APPLICATOR DATA		
CRIMP SIZE	TYPE	
WIRE 3.25 mm [.128]	F	
INSUL 4.20 mm [.165]	F	
APPL INSTRUCTIONS 408-10390		

TERMINAL DATA: G&H TERMINAL		G&H CRIMP SPECIFICATION	
TERMINAL NAME: RING FORM			
WIRE STRIP LENGTH		INSULATION DIAMETER RANGE	
5.70-6.30 mm [.224-.248 IN]		3.56mm MAX [.140 IN MAX]	
TERMINAL APPLICATION SPECIFICATION	G&H SPEC		
TERMINALS APPLIED			
TE TERMINAL	G&H TERMINAL	TE TERMINAL	G&H TERMINAL
1949643-1	25223.123.009	1949643-4	25223.213.011
1949643-2	25223.123.011		
1949643-3	25223.212.179		

WIRE SIZE	CRIMP HEIGHT mm [INCH]	CRIMP HEIGHT REFERENCE SETTING
2.50mm2	2.25+/-0.05 [.089+/- .002]	5.4
0.5+1.5mm OR 1.0+1.0mm	2.15+/-0.05 [.085+/- .002]	6.5
1.50mm2	2.10+/-0.05 [.083+/- .002]	6.7

- RECOMMENDED SPARE PARTS
- GREASE BEARING SURFACES LIGHTLY
- 3. LUBRICATE DAILY PER THE APPLICATOR INSTRUCTION SHEET SUPPLIED WITH THE APPLICATOR.
- APPLICATOR SPECIFIC DATA TO BE ENTERED INTO BLANK MEMORY CHIP AT ASSEMBLY. SEE BELOW FOR PART NUMBER:
 PNEUMATIC FEED WITH "SMART APPLICATOR" CONVERSION: 8-2266479-4
 SERVO FEED WITH "FINE CRIMP HEIGHT ADJUST": 8-2266479-5
 SERVO FEED WITH "NON-CRIMP HEIGHT ADJUST": 8-2266479-6
- 5. ADJUSTMENT OF THE STRIPPER MAY BE REQUIRED WHEN MOVING THE APPLICATOR BETWEEN BENCH AND LEADMAKER APPLICATIONS.
- APPLY PART NUMBER 1-23419-5 LOCTITE TO THREADS OF ITEMS 62. APPLY PART NUMBER 2-23419-6 LOCTITE TO THREADS OF ITEM 242. FOR -6 ONLY APPLY PART NUMBER 1-23419-5 LOCTITE TO THREADS OF ITEMS 37.
- GREASE THREADS, GROOVE AND O-RING ON ITEMS 35 & 252.
- MAGNET, ITEM 166 MUST BE ORIENTED CORRECTLY IN ORDER TO PROPERLY ACTUATE THE COUNTER.
- CRIMP HEIGHT REFERENCE SETTING WAS THE SETTING USED WHEN THE APPLICATOR WAS QUALIFIED AT THE FACTORY. ADJUSTMENT MAY BE NECESSARY WHEN RUNNING APPLICATOR IN THE FIELD.
- TERMINAL PITCH NOT COMPATIBLE WITH MECHANICAL FEED.
- WHEN ASSEMBLING -6 NON-CRIMP HEIGHT ADJUST APPLICATOR USE SHIM PACK 2119957-2 TO ALIGN APPLICATOR'S MAXIMUM WIRE CRIMP HEIGHT AT NORMAL TERMINATOR SHUT HEIGHT
- CUT TO LENGTH AT ASSEMBLY.

***WARNING**
 ON INSTALLATION, SET WIRE DISC, ITEM 40 TO LARGEST WIRE SIZE SETTING. USE OF SETTINGS BELOW MINIMUM REQUIRED CRIMP HEIGHT SETTING WILL CAUSE DAMAGE TO CRIMP TOOLING.

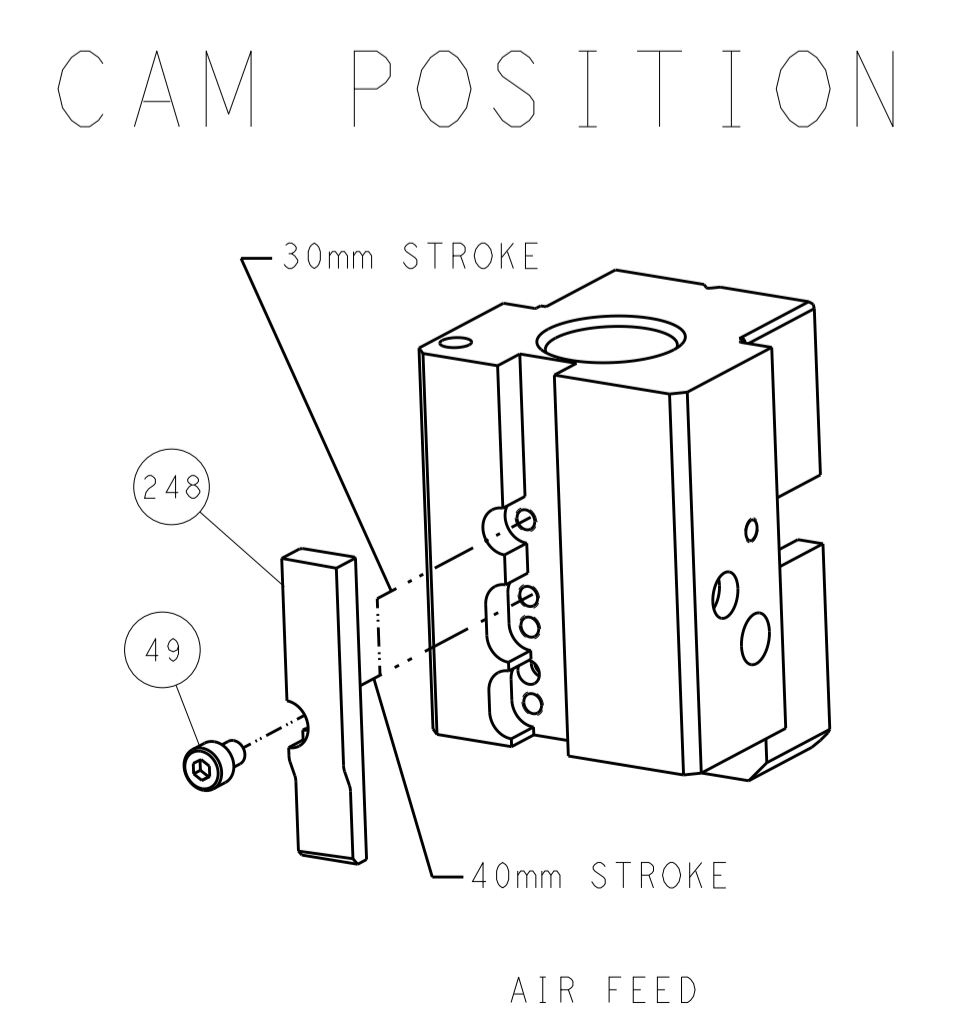
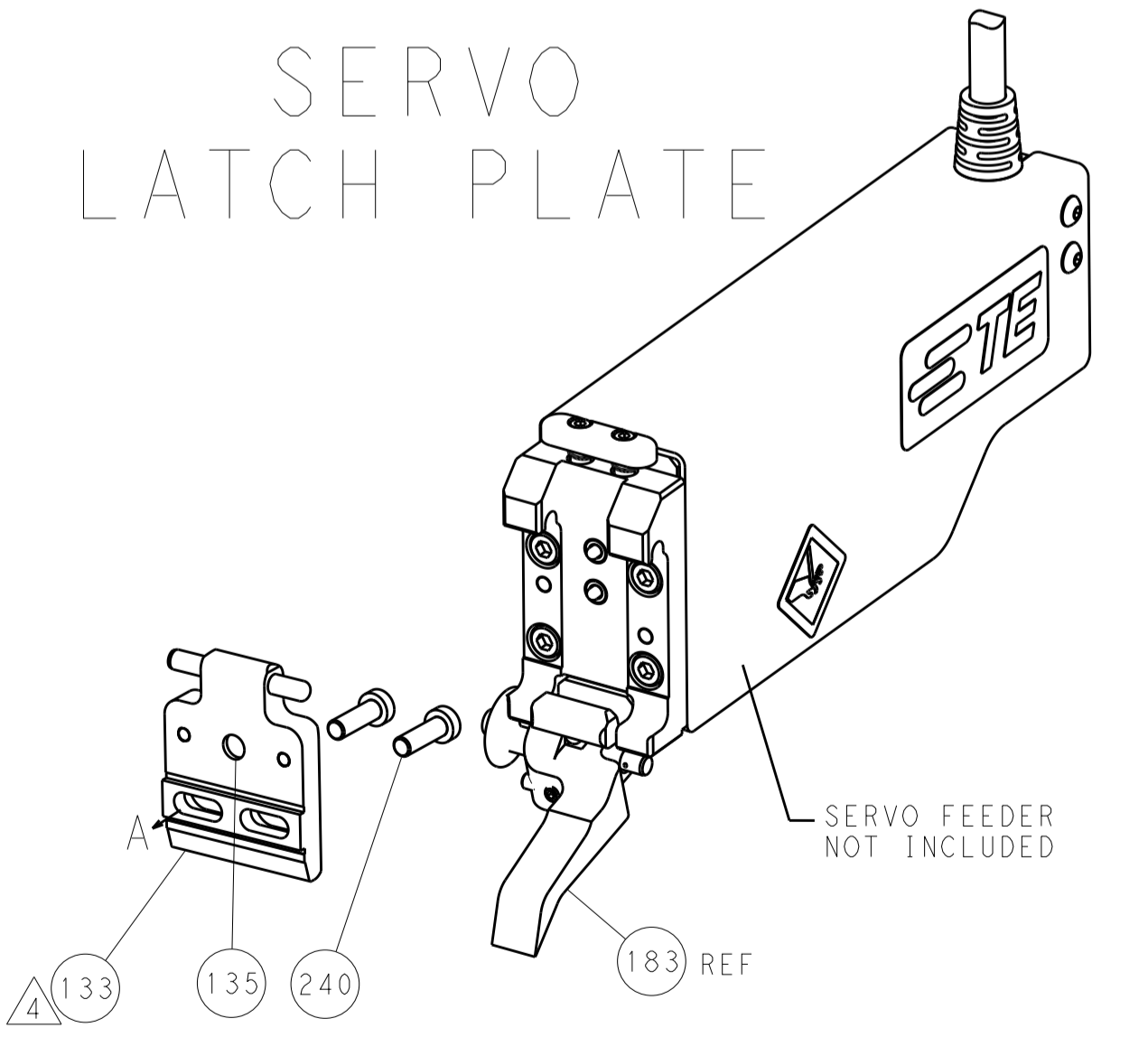
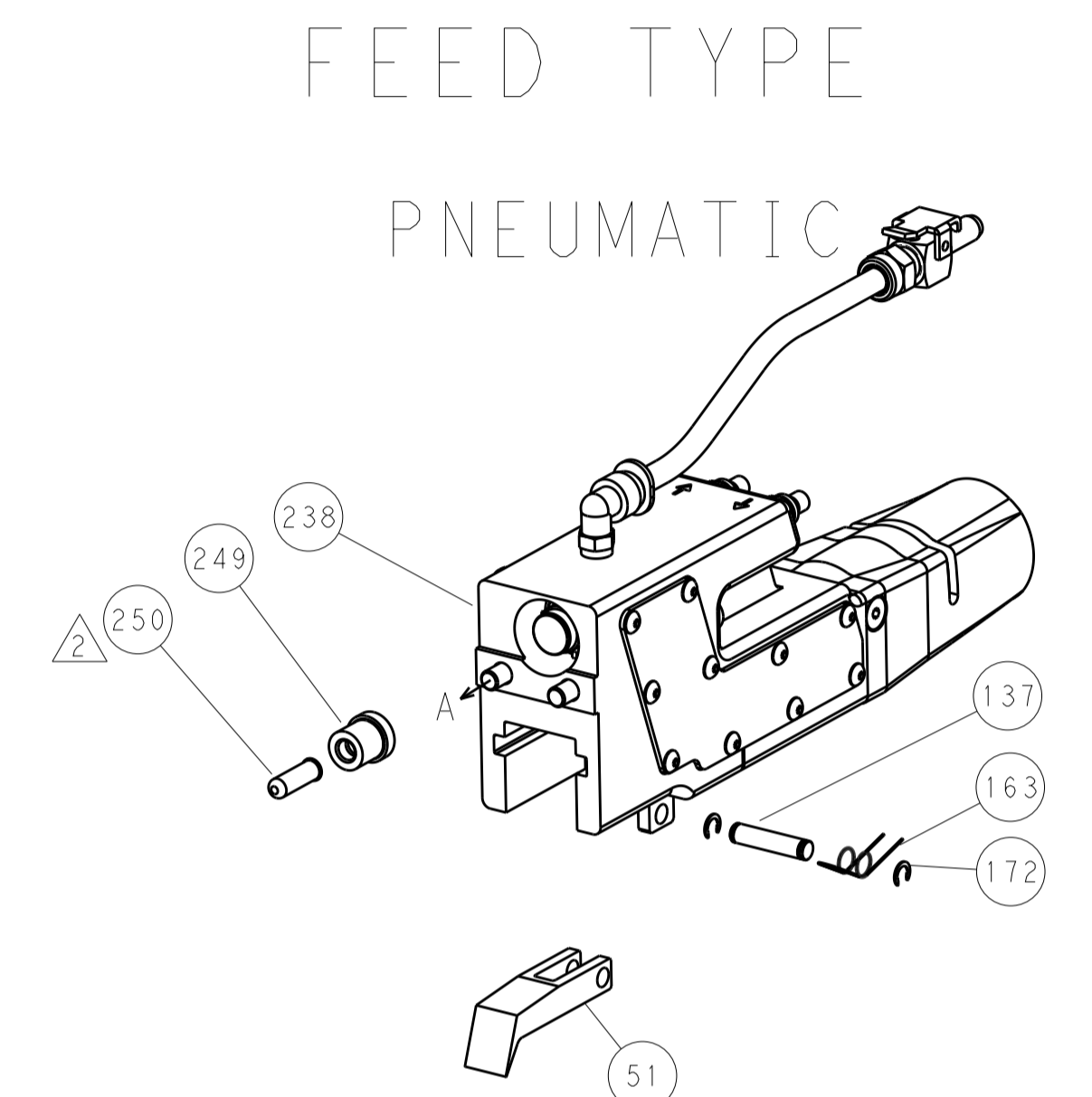
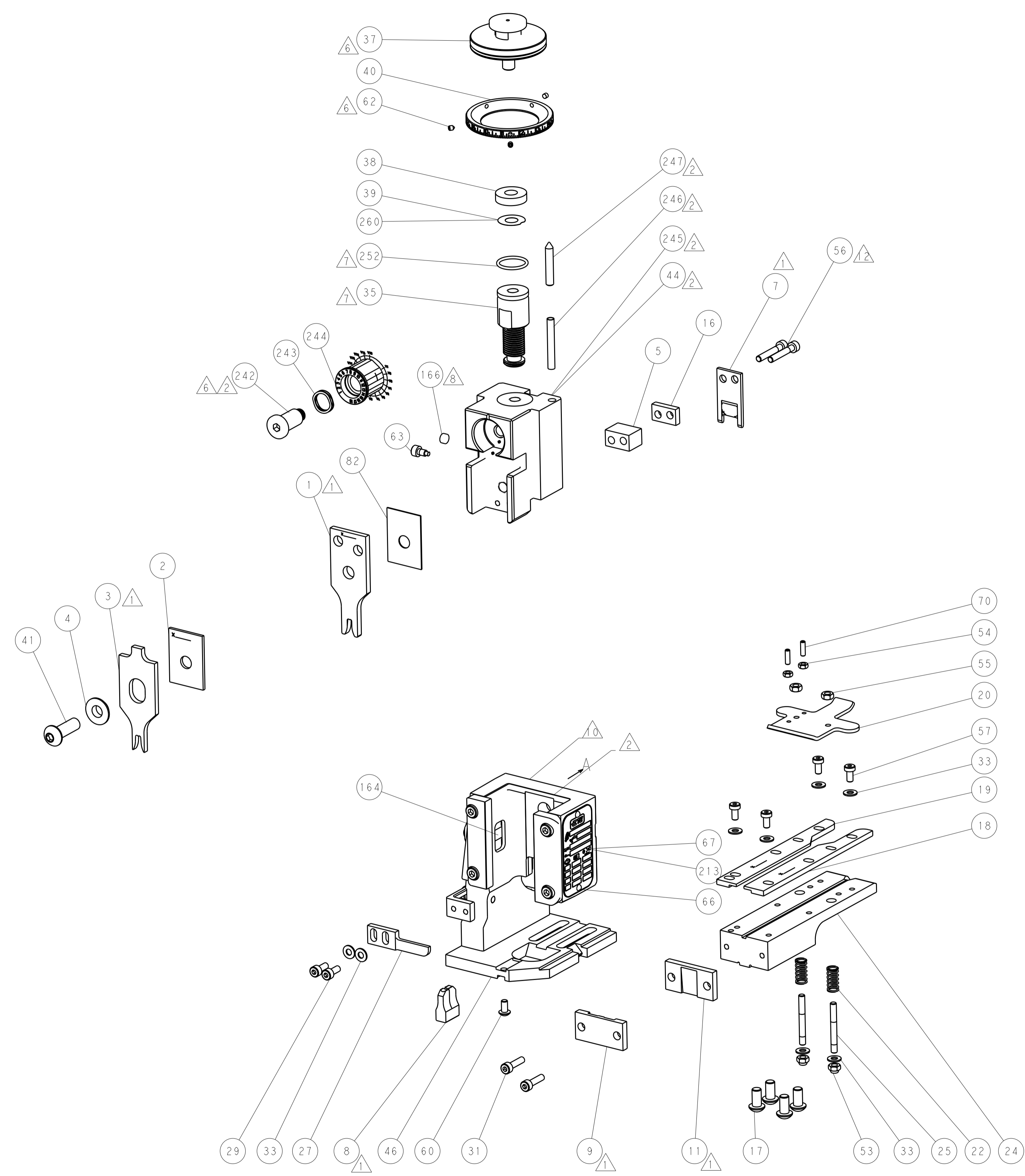
ATLANTIC VERSION
 Shown on sheets 1 of 4 & 2 of 4
 (Pacific version shown on sheets 3 of 4 & 4 of 4)

SET UP GAUGE		LOC	DIST	REVISIONS			
2119599-2		A	66	REV	DATE	BY	APPV
				1	DEVELOPMENT	23SEP2014	YY UG
				A	RELEASED	04DEC2014	YY UG

-	-	1	-	-	2119957-2	APPLICATOR SHIM PACK	260	
-	-	1	-	1	8-21084-0	O-RING, .676 ID, .070 DIA. MAT.	252	
-	-	-	-	1	2119640-1	PUSH ROD, AIR FEED	250	
-	-	-	-	1	2079988-1	BUSHING, LCH5-12, MISUMI	249	
-	-	-	-	1	2119641-1	FEED CAM, AIR FEED	248	
-	-	1	-	1	2119798-1	DETENT PIN	247	
-	-	1	-	1	1-22279-3	SPRING, COMPRESSION	246	
-	-	1	-	-	2119759-1	RAM, AMP STYLE, END FEED, NON-ADJUST	245	
-	-	1	1	1	2119082-5	CAM, SNAIL, INSULATION ADJUSTMENT	244	
-	-	1	1	1	2079764-1	WASHER, WAVE SPRING, CREST-TO-CREST	243	
-	-	1	1	1	2119083-1	RETAINER, INSULATION DIAL	242	
-	-	-	-	-	2168400-7	SHCS, LOW HEAD, RoHS, M5 X 10	240	
-	-	-	-	-	2119580-1	MECHANICAL FEED ASSEMBLY	239	
-	-	-	-	1	2063440-3	AIR FEED MODULE	238	
-	-	-	-	1	2119740-2	TAG, IDENTIFICATION	213	
-	-	REFREF	-	-	1901697-1	FEED FINGER ASSEMBLY, EF	183	
-	-	-	-	-	21045-3	RING, RETAIN, EXTERN, 3/16 CRESCENT	172	
-	-	1	1	1	994969-1	MAGNET, RARE EARTH HIGH ENERGY	166	
-	-	REFREFREFREF	-	-	994970-2	COUNTER, MAGNETIC	164	
-	-	-	-	-	240638-1	SPRING, FEED FINGER	163	
-	-	-	-	-	3-23627-7	PIN, RETAIN, GRVD, 3/16 X .854	137	
-	-	REFREF	-	-	SEE NOTE 4	MEMORY CHIP, PROGRAMMED	135	
-	-	1	1	-	1633743-1	SERVO FEED LATCH ASM	133	
-	-	1	1	1	455888-5	SPACER, CRIMPER	82	
-	-	1	1	1	2119956-2	DOCUMENTATION PACKAGE	71	
-	-	2	2	2	2-18032-2	SCR, SET, FLT POINT M3 X 10.0	70	
-	-	1	-	-	2119740-1	TAG, IDENTIFICATION	67	
-	-	2	2	2	2168078-1	SCREW, DRIVE, RH, RoHS, 2 x .188	66	
-	-	1	-	1	2119793-1	LIMITER, ADJUSTMENT BOLT	63	
-	-	3	-	3	992763-5	SCR, SET, SOC, CONE POINT, M3 x 4.0	62	
-	-	1	1	1	2079383-4	SCR, BHSC, RoHS (M4 X 8)	60	
-	-	4	4	4	2168400-4	SHCS, LOW HEAD, RoHS, M4 X 8	57	
-	-	2	2	2	1-2168083-2	SCR, SKT HD CAP, RoHS, M4 X 25	56	
-	-	2	2	2	5018030-2	NUT, HEX, REG, RoHS, M4	55	
-	-	2	2	2	5018030-1	NUT, HEX, REG, RoHS, M3	54	
-	-	2	2	2	986965-8	NUT, LOCK, HEX, TORQUE (M4)	53	
-	-	-	-	-	2119792-2	PAWL, EF, AIR	51	
-	-	-	-	-	18023-9	SCR, SKT HD CAP M4 X 6.0	49	
-	-	1	1	1	1-2119655-1	APPLICATOR BASIC ASSEMBLY, EF	46	
-	-	1	-	1	2119369-1	RAM, AMP STYLE, END FEED	44	
-	-	1	1	1	2079383-7	SCR, BHSC, RoHS (M8 X 25)	41	
-	-	1	-	1	2119645-1	DISC, NUMBERED FA WIRE ADJUSTMENT	40	
-	-	1	-	1	2119957-1	APPLICATOR SHIM PACK	39	
-	-	1	1	1	2119644-2	RAM WASHER, PRECISION	38	
-	-	1	1	1	2119085-1	FA HEAD, ATLANTIC STYLE	37	
-	-	1	-	1	2119092-1	BOLT, ADJUSTMENT	35	
-	-	8	8	8	1-18028-2	WASHER, FLAT, REG M4	33	
-	-	2	2	2	2168083-8	SCR, SKT HD CAP, RoHS, M4 X 16	31	
-	-	2	2	2	1-2168083-0	SCR, SKT HD CAP, RoHS, M4 X 10	29	
-	-	1	1	1	240639-1	STRIPPER (MACHINING)	27	
-	-	2	2	2	1320906-1	STUD, THREADED	25	
-	-	1	1	1	1-1752371-4	PLATE, STRIP GUIDE	24	
-	-	2	2	2	2-22281-3	SPRING, COMPRESSION	22	
-	-	1	1	1	1752373-4	DRAG	20	
-	-	1	1	1	2-1901696-2	STRIP GUIDE, REAR	19	
-	-	1	1	1	2-1901695-2	STRIP GUIDE, FRONT	18	
-	-	4	4	4	1-2079383-1	SCR, BHSC, RoHS (M6 X 12)	17	
-	-	1	1	1	1-240641-0	SPACER	16	
-	-	1	1	1	1-240644-7	PLATE, REAR SHEAR	11	
-	-	-	-	-	-	-	10	
-	-	1	1	1	690482-3	PLATE, FRONT SHEAR	9	
-	-	1	1	1	5-1803000-7	ANVIL, COMBINATION, END FEED	8	
-	-	1	1	1	1-2217206-3	BLADE, SLUG	7	
-	-	-	-	-	-	-	6	
-	-	1	1	1	7-240641-4	SPACER	5	
-	-	1	1	1	1-238009-1	BLOCK, FL CRIMPER SPACER	4	
-	-	1	1	1	1803187-2	CRIMPER, INSULATION F	3	
-	-	1	1	1	1-455888-7	SPACER, CRIMPER	2	
-	-	1	1	1	7-1633664-1	CRIMPER, WIRE	1	
-	-	77	-	-	-6 -5 -2	PART NO	DESCRIPTION	ITEM NO

DIMENSIONS:		TOLERANCES UNLESS OTHERWISE SPECIFIED:		DWG		REV	
mm	0 PLC ±.5	1 PLC ±.13	5 PLC ±.013	4 PLC ±.0001	Y. YIN	23SEP2014	23SEP2014
	ANGLES ±.0001	FINISH			G. BAILEY		
MATERIAL					J. GUO	23SEP2014	
					NAME	Ocean End Feed Applicator	
					SIZE	CAGE CODE	DRAWING NO
					A1	00779	2266479
					RESTRICTED TO		
					Customer Accessible Production Drawing	SCALE	1:1 SHEET 1 of 4 REV A

LOC	DIST	REV	DATE	BY	APPV
A	66				
		REVISIONS			
P	LTN	DESCRIPTION	DATE	DMN	APVD
-	-	SEE SHEET 1	-	-	-



ATLANTIC VERSION
 Shown on sheets 1 of 4 & 2 of 4
 (Pacific version shown on sheets 3 of 4 & 4 of 4)

DIMENSIONS: mm 		TOLERANCES UNLESS OTHERWISE SPECIFIED: 0 PLC ±.5 1 PLC ±0.5 2 PLC ±0.13 3 PLC ±0.013 4 PLC ±0.001 ANGLES ±.1		DWN T.Y. YIN 23SEP2014 CHK G. BAILEY 23SEP2014 APVD H. GUO 23SEP2014		NAME Ocean End Feed Applicator	
MATERIAL .		FINISH .		WEIGHT .		SIZE A11 00779 ©=2266479	
Customer Accessible Production Drawing				SCALE 1:1		SHEET 2 OF 4 REV A	

PACIFIC VERSION TERMINATOR INTERFACE ADAPTER	PART NUMBER	REVISION	DESCRIPTION	FEED TYPE
	2-2266479-2	A	FINE CRIMP HEIGHT ADJUST	PNEUMATIC
	2-2266479-5	A	FINE CRIMP HEIGHT ADJUST	SERVO LATCH PLATE ⁴
	2-2266479-7	A	FINE CRIMP HEIGHT ADJUST	NONE
	7-2266479-7	A	CRIMP TOOLING KIT	-

APPLICATOR DATA		
CRIMP	SIZE	TYPE
WIRE	3.25 mm [.128]	F
INSUL	4.20 mm [.165]	F
APPL INSTRUCTIONS 408-10390		

TERMINAL DATA: G&H TERMINAL		G&H CRIMP SPECIFICATION	
TERMINAL NAME: RING FORM			
WIRE STRIP LENGTH 5.70-6.30 mm [.224-.248 IN]		INSULATION DIAMETER RANGE 3.56mm MAX [.140 IN MAX]	
TERMINAL APPLICATION SPECIFICATION	G&H SPEC	-	-
TERMINALS APPLIED ¹⁰			
TE TERMINAL	G&H TERMINAL	TE TERMINAL	G&H TERMINAL
1949643-1	25223.123.009	1949643-4	25223.213.011
1949643-2	25223.123.011		
1949643-3	25223.212.179		

WIRE SIZE	CRIMP HEIGHT mm [INCH]	CRIMP HEIGHT REFERENCE SETTING
2.50mm2	2.25+/-0.05 [.089+/- .002]	5.4
0.5+1.5mm OR 1.0+1.0mm	2.15+/-0.05 [.085+/- .002]	6.5
1.50mm2	2.10+/-0.05 [.083+/- .002]	6.7



- ¹ RECOMMENDED SPARE PARTS
- ² GREASE BEARING SURFACES LIGHTLY
- 3. LUBRICATE DAILY PER THE APPLICATOR INSTRUCTION SHEET SUPPLIED WITH THE APPLICATOR.
- ⁴ APPLICATOR SPECIFIC DATA TO BE ENTERED INTO BLANK MEMORY CHIP AT ASSEMBLY. SEE BELOW FOR PART NUMBER:
PNEUMATIC FEED WITH "SMART APPLICATOR" CONVERSION: 8-2266479-4
SERVO FEED WITH "FINE CRIMP HEIGHT ADJUST": 8-2266479-5
- 5. ADJUSTMENT OF THE STRIPPER MAY BE REQUIRED WHEN MOVING THE APPLICATOR BETWEEN BENCH AND LEADMAKER APPLICATIONS.
- ⁶ APPLY PART NUMBER 1-23419-5 LOCTITE TO THREADS OF ITEMS 62.
APPLY PART NUMBER 2-23419-6 LOCTITE TO THREADS OF ITEM 242.
- ⁷ GREASE THREADS, GROOVE AND O-RING ON ITEMS 139 & 153.
- ⁸ MAGNET, ITEM 166 MUST BE ORIENTED CORRECTLY IN ORDER TO PROPERLY ACTUATE THE COUNTER.
- ⁹ CRIMP HEIGHT REFERENCE SETTING WAS THE SETTING USED WHEN THE APPLICATOR WAS QUALIFIED AT THE FACTORY. ADJUSTMENT MAY BE NECESSARY WHEN RUNNING APPLICATOR IN THE FIELD.
- ¹⁰ TERMINAL PITCH NOT COMPATIBLE WITH MECHANICAL FEED.
- ¹¹ THE RECOMMENDED SET-UP FOR END FEED APPLICATORS IS POST-FEED WITH ITEM 2119653-1. THE APPLICATOR CAN BE CONFIGURED FOR PRE-FEED WITH ITEM 2119652-1 BUT MAY ENCOUNTER PROBLEMS WITH SOME APPLICATIONS. FEED ISSUES OR TERMINAL JAMMING MAY OCCUR IN THE PRE-FEED CONFIGURATION.
- ¹² CUT TO LENGTH AT ASSEMBLY.

***WARNING**
ON INSTALLATION, SET WIRE DISC, ITEM 40 TO LARGEST WIRE SIZE SETTING. USE OF SETTINGS BELOW MINIMUM REQUIRED CRIMP HEIGHT SETTING WILL CAUSE DAMAGE TO CRIMP TOOLING.

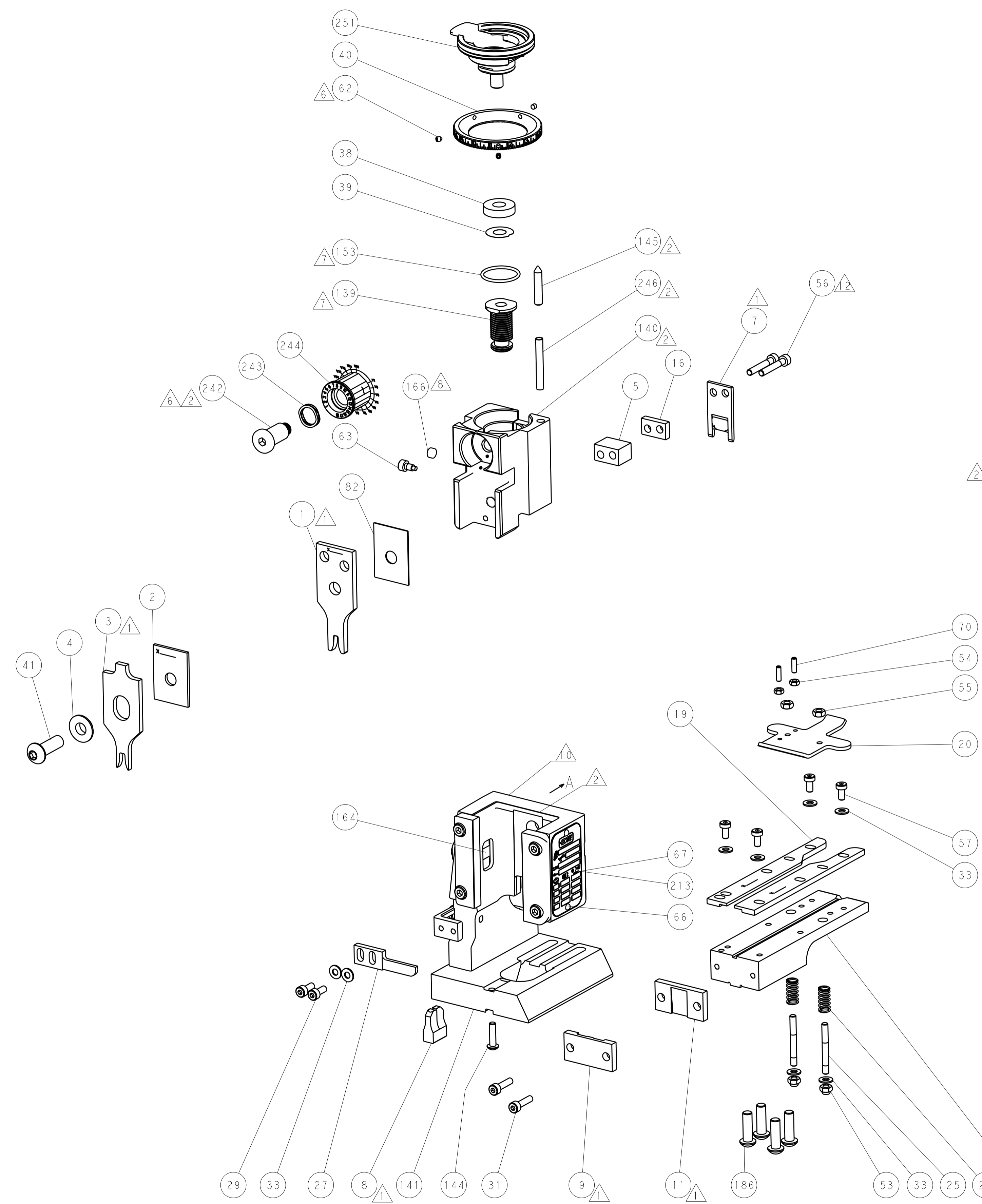
PACIFIC VERSION
Shown on sheets 3 of 4 & 4 of 4
(Atlantic version shown on sheets 1 of 4 & 2 of 4)

SET UP GAUGE	LOC	DIST	REVISIONS			
2119599-2	A	66	REV	DATE	BY	APPV
			-	SEE SHEET 1	-	-

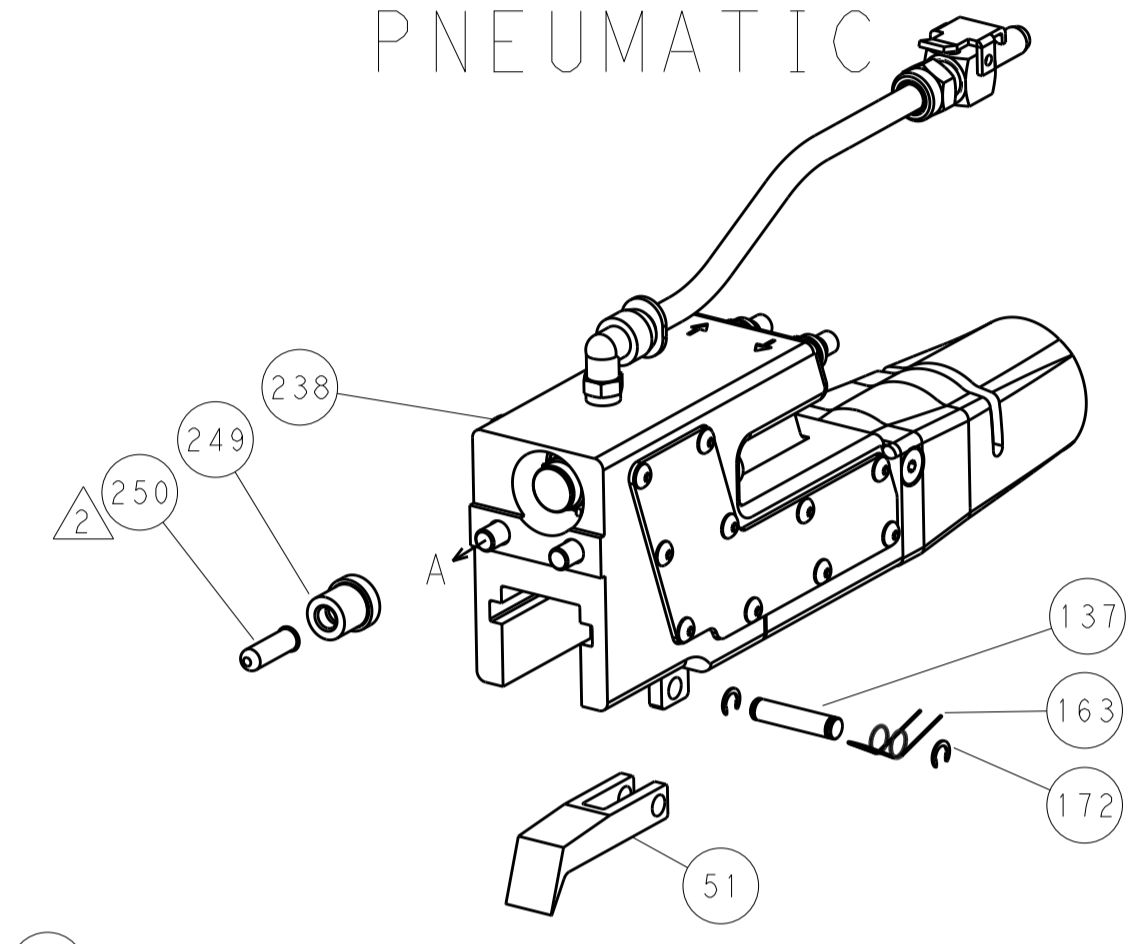
-	1	1	1	2119782-1	FINE ADJUST HEAD ASM, PACIFIC STYLE	251
-	-	-	1	2119640-1	PUSH ROD, AIR FEED	250
-	-	-	1	2079988-1	BUSHING, LCH5-12, MISUMI	249
-	1	1	1	1-22279-3	SPRING, COMPRESSION	246
-	1	1	1	2119082-5	CAM, SNAIL, INSULATION ADJUSTMENT	244
-	1	1	1	2079764-1	WASHER, WAVE SPRING, CREST-TO-CREST	243
-	1	1	1	2119083-1	RETAINER, INSULATION DIAL	242
-	-	2	-	2168400-7	SHCS, LOW HEAD, RoHS, M5 X 10	240
-	-	-	-	2119580-1	MECHANICAL FEED ASSEMBLY	239
-	-	-	1	2063440-3	AIR FEED MODULE	238
-	-	1	-	2119740-2	TAG, IDENTIFICATION	213
-	4	4	4	2079383-9	SCR, BHSC, RoHS (M6 X 20)	186
-	-	REF	-	1901697-1	FEED FINGER ASSEMBLY, EF	183
-	-	-	2	21045-3	RING, RETAIN, EXTERN, 3/16 CRESCENT	172
-	1	1	1	994969-1	MAGNET, RARE EARTH HIGH ENERGY	166
-	REF	REF	REF	994970-2	COUNTER, MAGNETIC	164
-	-	-	1	240638-1	SPRING, FEED FINGER	163
-	1	1	1	8-21084-1	O-RING, .801 ID, .070 DIA. MAT.	153
-	-	-	1	2119641-2	FEED CAM, AIR FEED	152
-	1	1	1	2119798-2	DETENT PIN	145
-	1	1	1	2079383-8	SCR, BHSC, RoHS (M4 X 16)	144
-	1	1	1	1-2119655-2	APPLICATOR BASIC ASSEMBLY, EF	141
-	1	1	1	2119651-1	RAM, ASIAN STYLE, END FEED	140
-	1	1	1	2119092-2	BOLT, ADJUSTMENT	139
-	-	-	1	3-23627-7	PIN, RETAIN, GRVD, 3/16 X .854	137
-	-	REF	-	SEE NOTE 4	MEMORY CHIP, PROGRAMMED	135
-	-	-	1	1633743-1	SERVO FEED LATCH ASM	133
-	1	1	1	455888-5	SPACER, CRIMPER	82
-	1	1	1	2119956-2	DOCUMENTATION PACKAGE	71
-	2	2	2	2-18032-2	SCR, SET, FLT POINT M3 X 10.0	70
-	1	-	1	2119740-1	TAG, IDENTIFICATION	67
-	2	2	2	2168078-1	SCREW, DRIVE, RH, RoHS, 2 x .188	66
-	1	1	1	2119793-1	LIMITER, ADJUSTMENT BOLT	63
-	3	3	3	992763-5	SCR, SET, SOC, CONE POINT, M3 X 4.0	62
-	4	4	4	2168400-4	SHCS, LOW HEAD, RoHS, M4 X 8	57
-	2	2	2	1-2168083-2	SCR, SKT HD CAP, RoHS, M4 X 25	56
-	2	2	2	5018030-2	NUT, HEX, REG, RoHS, M4	55
-	2	2	2	5018030-1	NUT, HEX, REG, RoHS, M3	54
-	2	2	2	986965-8	NUT, LOCK, HEX, TORQUE (M4)	53
-	-	-	1	2119792-2	PAWL, EF, AIR	51
-	-	-	1	18023-9	SCR, SKT HD CAP M4 X 6.0	49
-	1	1	1	2079383-7	SCR, BHSC, RoHS (M8 X 25)	41
-	1	1	1	2119645-1	DISC, NUMBERED FA WIRE ADJUSTMENT	40
-	1	1	1	2119957-1	APPLICATOR SHIM PACK	39
-	1	1	1	2119644-2	RAM WASHER, PRECISION	38
-	8	8	8	1-18028-2	WASHER, FLAT, REG M4	33
-	2	2	2	2168083-8	SCR, SKT HD CAP, RoHS, M4 X 16	31
-	2	2	2	1-2168083-0	SCR, SKT HD CAP, RoHS, M4 X 10	29
-	1	1	1	240639-1	STRIPPER (MACHINING)	27
-	2	2	2	1320906-1	STUD, THREADED	25
-	1	1	1	1-1752371-4	PLATE, STRIP GUIDE	24
-	2	2	2	2-22281-3	SPRING, COMPRESSION	22
-	1	1	1	1752373-4	DRAG	20
-	1	1	1	2-1901696-2	STRIP GUIDE, REAR	19
-	1	1	1	2-1901695-2	STRIP GUIDE, FRONT	18
-	1	1	1	1-240641-0	SPACER	16
-	1	1	1	1-240644-7	PLATE, REAR SHEAR	11
-	-	-	-	-	-	10
-	1	1	1	690482-3	PLATE, FRONT SHEAR	9
-	1	1	1	5-1803000-7	ANVIL, COMBINATION, END FEED	8
-	1	1	1	1-2217206-3	BLADE, SLUG	7
-	-	-	-	-	-	6
-	1	1	1	7-240641-4	SPACER	5
-	1	1	1	1-238009-1	BLOCK, FL CRIMPER SPACER	4
-	1	1	1	1803187-2	CRIMPER, INSULATION F	3
-	1	1	1	1-455888-7	SPACER, CRIMPER	2
-	1	1	1	7-1633664-1	CRIMPER, WIRE	1

DIMENSIONS:		TOLERANCES UNLESS OTHERWISE SPECIFIED:		DRAWN		CHK		APPV		NAME		
mm	0 PLC ±.5	1 PLC ±0.5	2 PLC ±0.13	3 PLC ±0.013	4 PLC ±0.0013	ANGLES ±.0001	FINISH	Y. YIN	23SEP2014	G. BAILEY	23SEP2014	
MATERIAL				FINISH				U. GUO				23SEP2014
WEIGHT				SCALE				A1				00779
Customer Accessible Production Drawing				SCALE				1:1				SHEET 3 OF 4

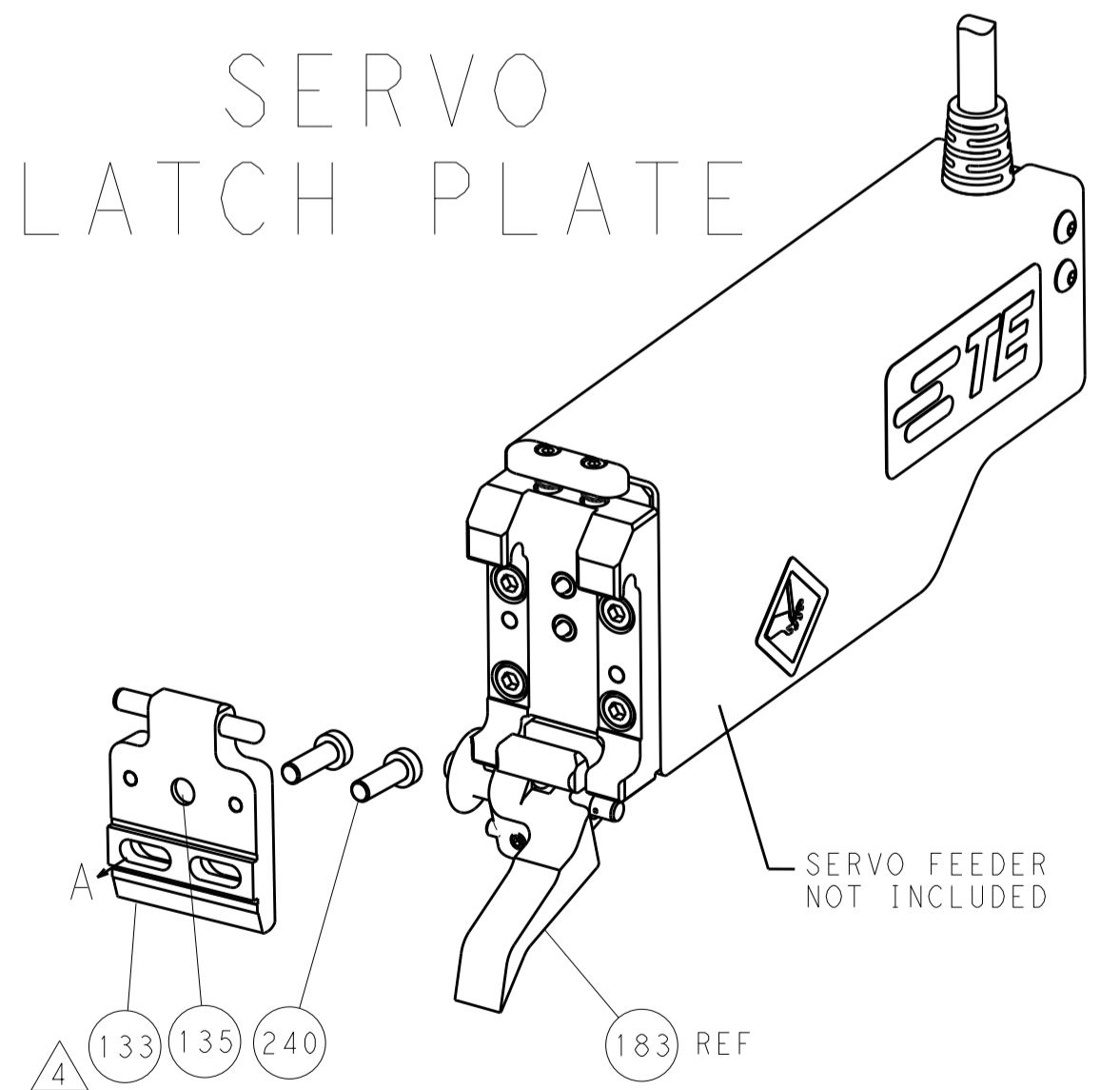
LOC	DIST	REVISIONS				
A	66	P. LTH	DESCRIPTION	DATE	DWN	APVD
		-	SEE SHEET 1	-	-	-



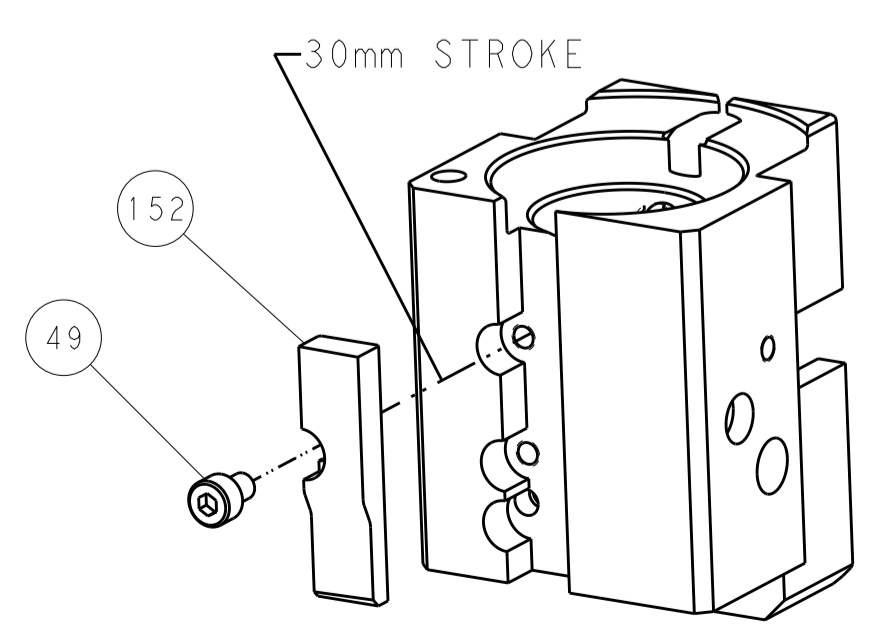
FEED TYPE
PNEUMATIC



SERVO
LATCH PLATE



CAM POSITION



AIR FEED

PACIFIC VERSION
 Shown on sheets 3 of 4 & 4 of 4
 (Atlantic version shown on sheets 1 of 4 & 2 of 4)

DIMENSIONS:		TOLERANCES UNLESS OTHERWISE SPECIFIED:		DWN	Y. YIN	23SEP2014	TE Connectivity Harrisburg, PA 17105-3608
mm	0 PLC ±0.5	1 PLC ±0.5	2 PLC ±0.13	CHK	G. BAILEY	23SEP2014	
	3 PLC ±0.013	4 PLC ±0.001	ANGLES ±0.001	APVD	J. GUO	23SEP2014	NAME
MATERIAL	FINISH			PRODUCT SPEC		Ocean End Feed Applicator	
				APPLICATION SPEC		SIZE	
				WEIGHT		CAGE CODE	
				A1 00779		DRAWING NO	
				Customer Accessible Production Drawing		RESTRICTED TO	
				SCALE		SHEET	
				1:1		4 OF 4	
				REV		A	