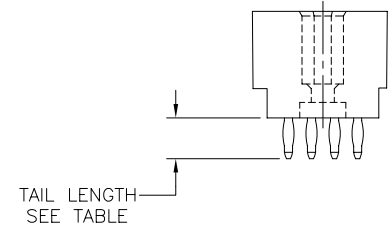
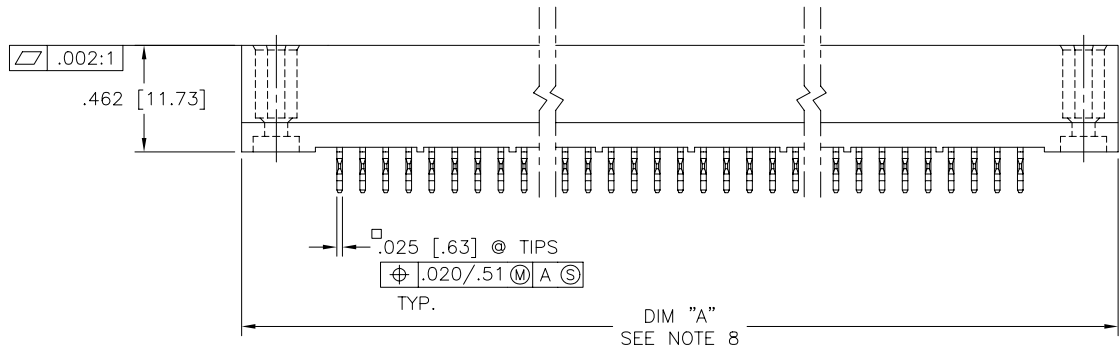
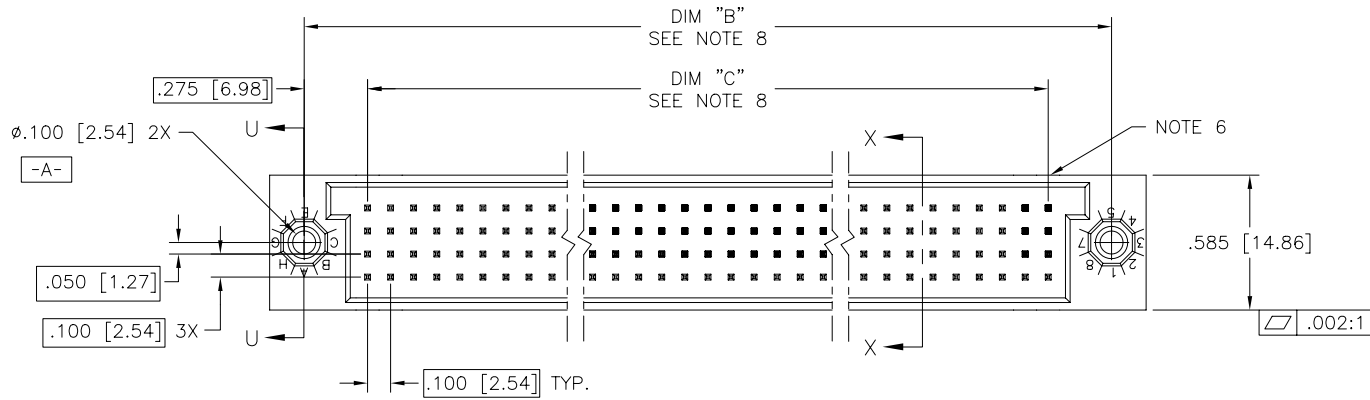


PRODUCT NUMBER
SEE TABLE



FCI
FCIconnect.com

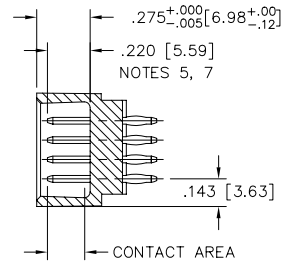
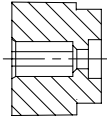
Copyright FCI

mat'l. code		surface		tolerance		projection		product family	
-		ISO 1302 ✓		ISO 406 ISO 1101		INCH/MM		HPC	
ltr	ecn	no	dr	date		tolerances unless otherwise specified		title	
B	v40941	PDP	6/01/94	angles	linear	.xx ±.01/.3		4 ROW VERTICAL HEADER	
C	v50207	LSS	2/17/95			.xxx ±.005/.13		MULTI-PLATED P.F. PINS, 0 G.P.	
D	v90011	HTB	1/06/99	σ±2'		.xxxx ±.0020/.051		scale 1:1	
E	v00276	JWS	2/02/00	dr	P. PARSONS	4/12/94		dwg no	
F	v05-0776	DCH	8/15/05	enr	J. AFTON	4/11/95		sheet 1 of 4 size	
G	v05-1048	DAI	11/16/05	chr	G. PETERS	4/15/94		50760 A3	
H	M06-0261	AEA	7/10/06	appd	S. CLARK	4/18/94		type Product Customer Drawing	
sheet	revision	H	H	H	H				
index	sheet	1	2	3	4				

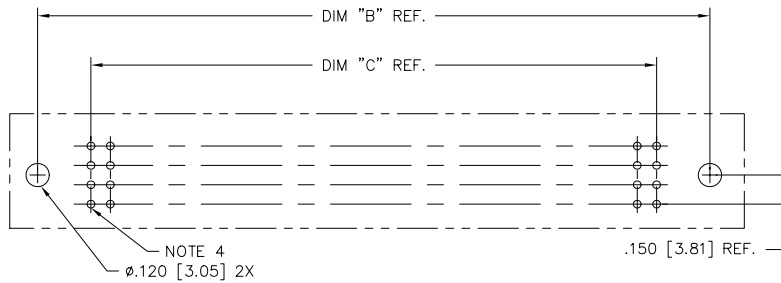
form: A3

PRODUCT NUMBER
SEE TABLE

SECTION U-U



SECTION X-X



RECOMMENDED PCB LAYOUT
(ALL HOLES LOCATED ON .100/2.54 GRID
UNLESS OTHERWISE SPECIFIED)

NOTES:

① PRODUCT NUMBERING CODE:
50760 - X YYY Z LF
LEAD FREE (OPTIONAL)
TAIL LENGTH (SEE TABLE)
NO. OF POSITIONS (NOTE 2)
PLATING (SEE TABLE)
BASE NUMBER

PRODUCT NUMBERING CODE FOR
SELECT LOAD PART NUMBERS:
50760 - XXYYY LF
LEAD FREE (OPTIONAL)
SEQUENCE NUMBER
ALWAYS "XX"
BASE NUMBER

② THIS PRODUCT IS CONFIGURED IN SIZES OF 6 thru 80
COLUMNS IN INCREMENTS OF ONE.
i.e.: 6,7,8,9,.....79,80.

③ HOUSING MATERIAL: GLASS AND MINERAL FILLED
HIGH TEMP. THERMOPLASTIC, FLAME RETARDANT PER
UL94V-0. COLOR: BLACK.
PIN MATERIAL: PHOS BRONZE

④ ø.0453/1.151 DRILLED HOLE PLATED WITH .0003/.007 MIN.
SnPb OVER .001/.03 to .003/.08 Cu. PLATING TO
ACHIEVE A ø.040±.003/1.02±.08 HOLE.

⑤ TO ASSURE PROPER INSTALLATION: TOOLING, AS
SPECIFIED IN INSTRUCTION MANUAL 155915-001 MUST
BE USED. PIN MATING LENGTH WILL BE ±.002/.05
AFTER INSTALLATION.

⑥ COMPANY NAME, PART NUMBER AND LOT CODE TO APPEAR
ON THIS SURFACE PER BUS-22-108.

⑦ REFERENCE 50807 FOR F.M.L.B. AVAILABLE OPTIONS
AND WORKSHEET.

⑧ LENGTH DIMENSION CALCULATIONS:
DIM A: .100/2.54 X NO. OF COLUMNS + .750/19.05
DIM B: .100/2.54 X NO. OF COLUMNS + .450/11.43
DIM C: .100/2.54 X NO. OF COLUMNS - .100/2.54

9. THIS PRODUCT (WITH "LF" SUFFIX) MEETS EUROPEAN UNION DIRECTIVES
AND OTHER COUNTRY REGULATIONS AS DESCRIBED IN GS-22-008.

10. THIS HOUSING WILL WITHSTAND EXPOSURE TO 260 °C PEAK TEMPERATURE
FOR 10-30 SECONDS IN A CONVECTION, INFRA-RED OR VAPOR PHASE
OVEN.



FCIconnect.com

Copyright FCI

mat'l. code		surface		tolerance		projection		product family			
-		ISO 1302 ✓		ISO 406 ISO 1101		⊕		HPC			
ltr		ecn no dr		date		tolerances unless otherwise specified		title			
H						.xx ±.01/.3 .xxx ±.005/.13 .xxxx ±.0020/.051		4 ROW VERTICAL HEADER MULTI-PLATED P.F. PINS, 0 G.P.			
						INCH/MM		sheet 2 of 4 size			
						scale 1:1		A3			
		dr		P. PARSONS 4/12/94		FCI		dwg no			
		enr		J. AFTON 4/11/95				50760			
		chr		G. PETERS 4/15/94							
		appd		S. CLARK 4/18/94				type Product Customer Drawing			
sheet index		revision sheet									

PRODUCT NO.	NUMBER OF POSITIONS	PLATING: CONTACT AREA	MIN PLATING: PRESS-FIT AREA	MIN PLATING: TAIL AREA	TAIL LENGTH REF
50760-AYYYYA	YYY	30u"/0.76u Au	40u"/1.02u SnPb	40u"/1.02u SnPb	.177 / 4.50
50760-AYYYYG	YYY	30u"/0.76u Au	40u"/1.02u SnPb	40u"/1.02u SnPb	.250 / 6.35
50760-BYYYYA	YYY	30u"/0.76u GXT	40u"/1.02u SnPb	40u"/1.02u SnPb	.177 / 4.50
50760-BYYYYALF	YYY	30u"/0.76u GXT	40u"/1.02u Sn	40u"/1.02u Sn	.177 / 4.50
50760-BYYYYG	YYY	30u"/0.76u GXT	40u"/1.02u SnPb	40u"/1.02u SnPb	.250 / 6.35
50760-BYYYYGLF	YYY	30u"/0.76u GXT	40u"/1.02u Sn	40u"/1.02u Sn	.250 / 6.35
50760-CYYYYC	YYY	30u"/0.76u Au	40u"/1.02u SnPb	30u"/0.76u Au	.533 / 13.54
50760-CYYYYD	YYY	30u"/0.76u Au	40u"/1.02u SnPb	30u"/0.76u Au	.733 / 18.62
50760-DYYYYC	YYY	30u"/0.76u GXT	40u"/1.02u SnPb	30u"/0.76u GXT	.533 / 13.54
50760-DYYYYCLF	YYY	30u"/0.76u GXT	40u"/1.02u Sn	30u"/0.76u GXT	.533 / 13.54
50760-DYYYYD	YYY	30u"/0.76u GXT	40u"/1.02u SnPb	30u"/0.76u GXT	.733 / 18.62
50760-DYYYYDLF	YYY	30u"/0.76u GXT	40u"/1.02u Sn	30u"/0.76u GXT	.733 / 18.62
50760-XX003	180	30u"/0.76u GXT	30u"/0.76u GXT	Au FLASH	SEE SHEET 4
50760-XX003LF	180	30u"/0.76u GXT	30u"/0.76u GXT	Au FLASH	SEE SHEET 4



FCIconnect.com

Copyright FCI

mat'l. code		surface		tolerance		projection		product family	
-		ISO 1302 ✓		ISO 406 ISO 1101				HPC	
ltr	ecn	no	dr	date		tolerances unless otherwise specified		title	
H						.xx ±.01/.3 .xxx ±.005/.13 .xxxx ±.0020/.051		INCH/MM MULTI-PLATED P.F. PINS, 0 G.P.	
				dr		P. PARSONS		4/12/94	
				enr		J. AFTON		4/11/95	
				chr		G. PETERS		4/15/94	
				appd		S. CLARK		4/18/94	
sheet index		revision sheet							



50760

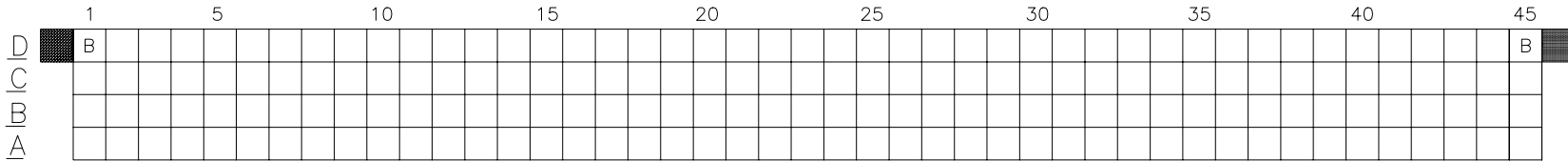
A3

type Product Customer Drawing

form: A3

PRODUCT NUMBER
50760-XX003
50760-XX003LF

SPECIAL LOAD 50760-XX003 AND 50760-XX003LF SHOWN ON THIS SHEET



ITEM KEY	SIGNAL DATA			
	SIZE 4 x 45	TOTAL NO. OF POSITIONS -180	NO. OF POSITIONS LOADED - 180	
	PLATING - 30u"/.76u GXT	PRESS FIT STYLE		
	QTY.	MATING LENGTH	TAIL LENGTH	TOTAL PIN LENGTH
A	178	.180 / 4.57	.557 / 14.15	.924 / 23.47
B	2	.210 / 5.33	.587 / 14.91	.984 / 24.99

PLATING NOTE: POST-PLATED

- ALL POSITIONS ARE LOADED WITH "A", EXCEPT AS SHOWN.
- COLUMN 1, ROW A IS DESIGNATED AS SIGNAL PIN 1, AS VIEWED FROM THE MATING FACE.

mat'l. code		surface		tolerance		projection		product family	
-		ISO 1302 ✓		ISO 406 ISO 1101				HPC	
ltr	ecn	no	dr	date	tolerances unless otherwise specified			title	
H					angles	linear	.xx ±.01/.3	4 ROW VERTICAL HEADER	
							.xxx ±.005/.13	MULTI-PLATED P.F. PINS, 0 G.P.	
					σ±2'		.xxx ±.0020/.051	scale 1:1	
					dr	P. PARSONS	4/12/94	dwg no	
					enr	J. AFTON	4/11/95	sheet 4 of 4 size	
					chr	G. PETERS	4/15/94	50760 A3	
					appd	S. CLARK	4/18/94	type Product Customer Drawing	
sheet index	revision sheet								