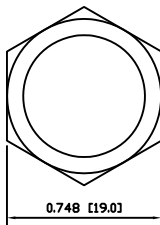
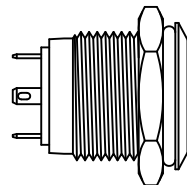
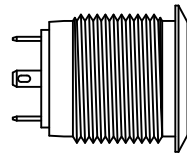


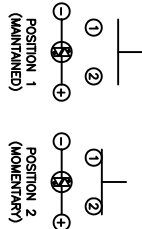
EXPLODED VIEW



ASSEMBLED VIEW



SCHEMATIC



SPECIFICATIONS

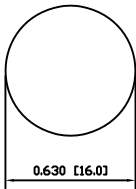
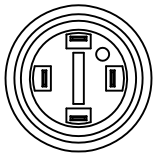
FUNCTION: 1P1T OFF-(ON)
 RATING: 2A 48VDC
 ILLUMINATION VOLTAGE: 1.8V 20mA
 CONTACT RESISTANCE: Initial: 50mΩ Max. at 1A 12VDC
 INSULATION RESISTANCE: 1,000MΩ Min. at 500VDC
 DIELECTRIC STRENGTH: 2,000VAC Min. for 1 Minute
 ELECTRICAL LIFE: 200,000 Cycles
 MECHANICAL LIFE: 1,000,000 Cycles
 INGRESS PROTECTION: IP65
 TEMPERATURE: Operating: -20°C to 70°C
 APPROVALS: ROHS COMPLIANT

COLORS AND FINISH

BODY: Stainless Steel Machine Finish
 ACTUATOR: Stainless Steel Machine Finish
 ILLUMINATION: Red (Forward) Red (Reverse)

MATERIALS

BUSHING: Stainless Steel (304)
 BASE: Polybutylene Terephthalate (PBT), UL94 V-2
 ACTUATOR: Stainless Steel (304)
 POLYCARBONATE (PC)
 HARDWARE: Nickel Plated Brass (H62)
 SEALING: Silicone Rubber
 SPRING: Stainless Steel (304)
 CONTACTS: Silver Alloy Plated Copper (AgCdO)
 TERMINALS: Brass (H62)
 O-RING: Silicone Rubber



SUGGESTED PANEL CUTOUT

MAXIMUM PANEL THICKNESS: 0.315 [8.0mm]

BODY	A	09/08/03	CAB
COLORS	A	09/08/03	CAB
MATERIALS	B	09/10/28	CAB
SPECIFICATIONS	A	09/08/03	CAB
REFERENCE	REV.	DATE	BY

THE INFORMATION CONTAINED IN THIS DOCUMENT IS PROPRIETARY TO E-SWITCH AND IS NOT TO BE COPIED OR TRANSMITTED

INITIAL RELEASE DESCRIPTION

2119 4/28/13

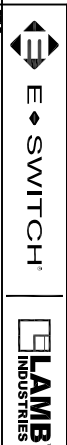
SCALE: ±0.008 [±0.2] / ±.1

PROJECTION: 1/8"

TRIAL NUMBER: 52-PV6F240SS211

DATE: April 26, 2013

REVISION: A



PV6F240SS-211