

NOTES:

1. MATERIALS AND FINISHES:

CONTACT - BRASS - GOLD PLATED  
 BODY - BRASS - GOLD PLATED  
 SLEEVE - BRASS - WHITE BRONZE PLATED  
 OUTER CONTACT - PHOSPHOR BRONZE - WHITE BRONZE PLATED  
 CAP - STAINLESS STEEL - GOLD PLATED  
 INSULATOR - PTFE

2. PHYSICAL:

A. OPERATING TEMPERATURE = -65°C to +165°C  
 B. CONTACT RETENTION = 6.0 LBS. AXIAL

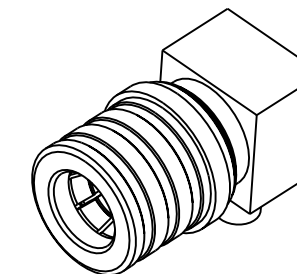
3. ELECTRICAL:

A. FREQUENCY RANGE = DC to 6 GHz  
 B. VSWR = 1.05 : 1 MAX. DC-3GHz  
 = 1.12 : 1 MAX. 3-6GHz

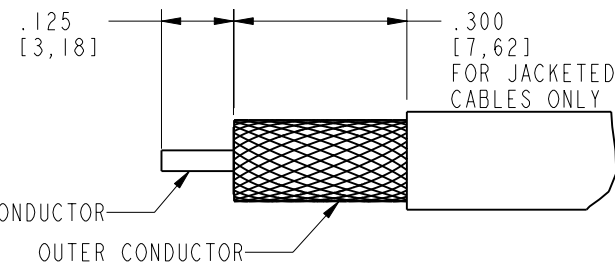
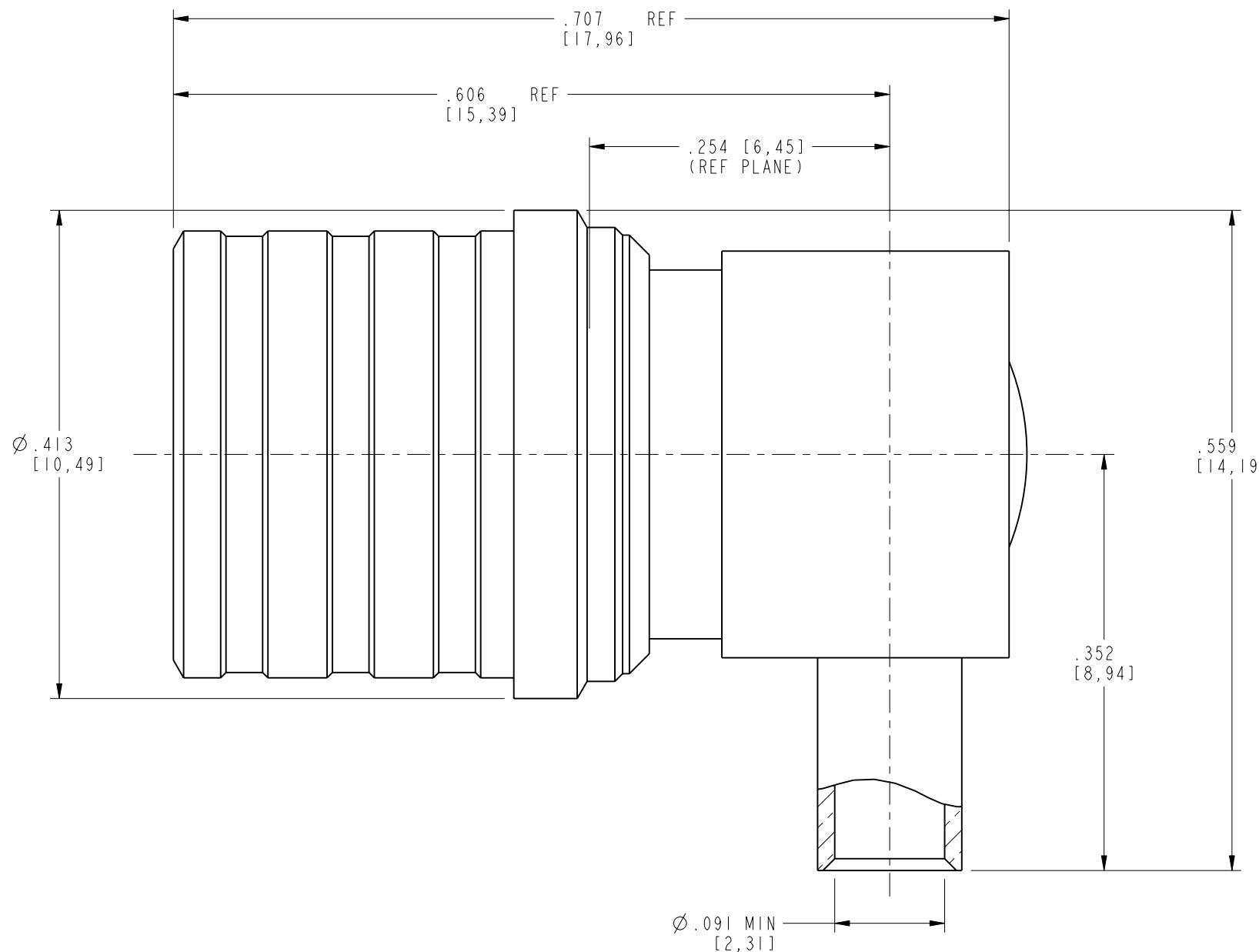
4. CABLE ASSEMBLY INSTRUCTIONS PER:

A. TRIM CABLE AS SHOWN  
 B. INSERT CABLE INTO R/A ENTRY  
 C. SOLDER OUTER CONDUCTOR TO BODY  
 D. SOLDER CENTER CONDUCTOR TO CONTACT THROUGH ACCESS HOLE  
 E. DEPRESS EXPANSION CAP IN ACCESS HOLE  
 F. APPLY HEAT SHRINK AS REQUIRED

930-104P-51A		REVISIONS			
DRAWING NO.	REV	DESCRIPTION	DATE	ECO	APPR
THIRD ANGLE PROJ.	A	RELEASE TO MFG	12/18/02	44315	CPM



SCALE 2.000



RECOMMENDED CABLE TRIM DIMENSIONS  
 SEMI-RIGID AND FLEX ALTERNATIVE  
 SCALE 3.000

**CUSTOMER OUTLINE DRAWING**  
 ALL OTHER SHEETS ARE FOR INTERNAL USE ONLY

UNLESS OTHERWISE SPECIFIED, DIMENSIONS ARE IN INCHES AND TOLERANCES ARE: 2 PLACE DECIMAL ±.015 (0,381 mm) 3 PLACE DECIMAL ±.005 (0,127 mm) ANGLES ± 1°	MATERIAL	DRAWN K. CAPOZZI	DATE 6-May-02	TITLE QMA 50 OHM R/A PLUG FOR .085 SEMI-RIGID RG-405 TYPE CABLE	<b>Amphenol</b> Amphenol Corporation Communication and Network Products Division Danbury, CT U.S.A. 06810		
	REFERENCE EAR #602 GEN #ASSYMI-QMA 615X-1805-100	ENGINEER G. ANTONINI	DATE 5-Mar-02				
NOTICE - These drawings, specifications, or other data (1) are, and remain the property of Amphenol Corp. (2) must be returned upon request; and (3) are confidential and not to be disclosed to any person other than those to whom they are given by Amphenol Corp. The furnishing of these drawings, specifications, or other data by Amphenol Corp., or to any other person to anyone for any purpose is not to be regarded by implication or otherwise in any manner licensing, granting rights or permitting such holder or any other person to manufacture, use or sell any product, process or design, patented or otherwise, that may in any way be related to or disclosed by said drawings, specifications, or other data.		APPROVED O. BARTHELMES	DATE 12/18/02	CODE ID 74868	DWG SIZE B	DRAWING NO. 930-104P-51A	REV A
							SCALE: 8.0:1