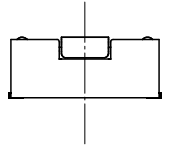
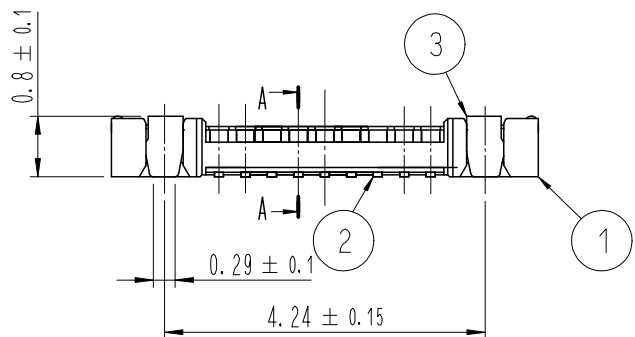
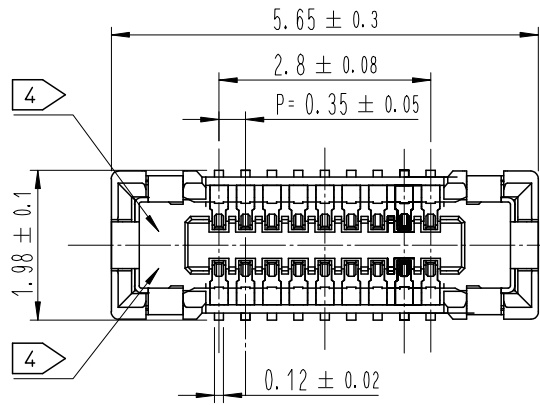
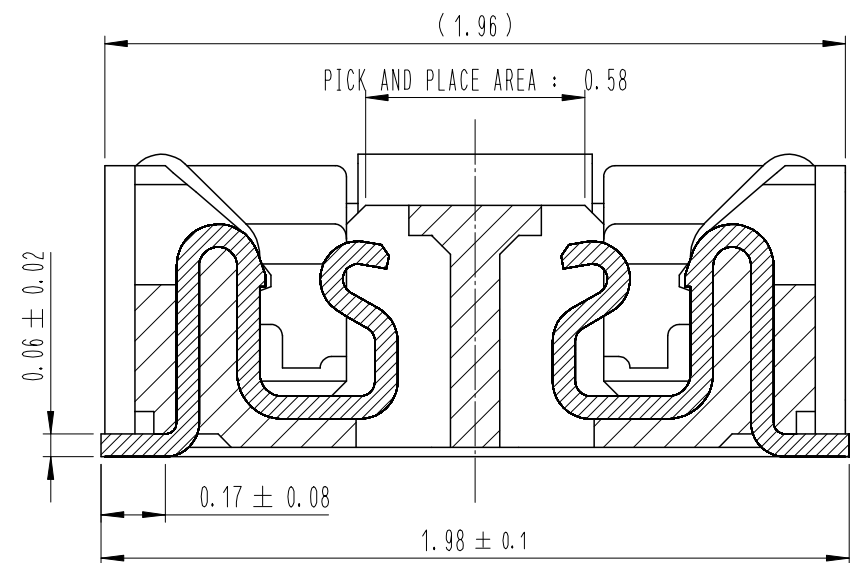


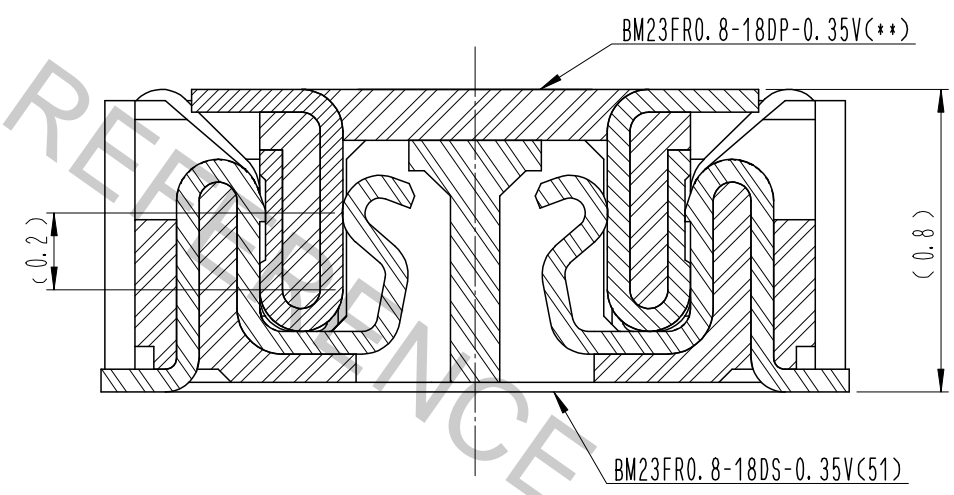
Aug.1.2018 Copyright 2018 HIROSE ELECTRIC CO., LTD. All Rights Reserved.
 In case that the application demands a high level of reliability, such as automotive,
 please contact a company representative for further information.



A-A(50:1)



ENGAGEMENT FIGURE (50:1)



- NOTE
- 1 . ALL LEAD CO-PLANARITY SHALL BE 0.08mm MAX.
 - 2 . CONTACT PLATING SPECIFICATIONS.
 CONTACT AREA : GOLD 0.05 μm MIN.
 SMT LEAD : GOLD 0.05 μm MIN.
 UNDERPLATING : NICKEL 1 μm MIN.
 (SURFACE : SEALING)
 - 3 . MATAL FITTING PLATING SPECIFICATIONS.
 SMT LEAD : GOLD 0.05 μm MIN.
 UNDERPLATING : NICKEL 1 μm MIN.
 (SURFACE : SEALING)
 - 4 . HRS MARK AND CAV NO. IS INDICATED IN APPROX POSITION SHOWN.

| COUNT | DESCRIPTION OF REVISIONS | B | Y | CHKD | DATE | COUNT | DESCRIPTION OF REVISIONS | B | Y | CHKD | DATE |
|-------|--------------------------|---|---|------|------|-------|--------------------------|---|---|------|------|
| △ | | | | | | △ | | | | | |
| △ | | | | | | △ | | | | | |
| △ | | | | | | △ | | | | | |

| NO. | MATERIAL | FINISH , REMARKS | NO. | MATERIAL | FINISH , REMARKS |
|-----|-----------------|------------------------------|-----|-----------|----------------------|
| 4 | PS | CLEAR (EMBOSSD CARRIER TAPE) | | | |
| 3 | PHOSPHOR BRONZE | 3 | | | |
| 2 | PHOSPHOR BRONZE | 2 | 6 | PS | BLACK (PLASTIC REEL) |
| 1 | LCP | UL94 V-0, BLACK | 5 | POLYESTER | CLEAR (COVER TAPE) |

| REMARKS | | | | | DRAWN | DESIGNED | CHECKED | APPROVED | RELEASED |
|---------|--|--|--|--|------------|------------|----------|------------|----------|
| | | | | | S. H. JUNG | S. H. JUNG | H. W. JO | T. S. KANG | 17.06.21 |
| | | | | | 16.09.09 | 16.09.09 | 16.09.09 | 16.09.09 | |

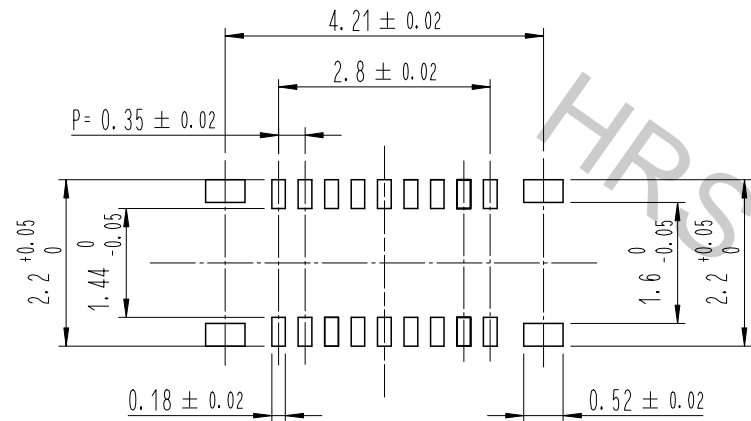
| CODE NO. (OLD) | DRAWING NO. | PART NO. | CODE NO |
|----------------|-------------|---------------------------|-------------------|
| | EDC3-632354 | BM23FR0. 8-18DS-0.35V(51) | CL 6644-0091-0-51 |

SCALE 10:1
 UNITS mm
HRS HIROSE KOREA CO., LTD.

HRS DRAWING FOR REFERENCE

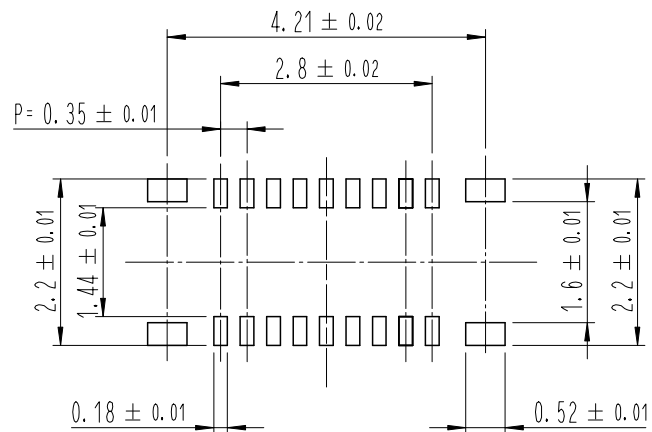
Aug.1.2018 Copyright 2018 HIROSE ELECTRIC CO., LTD. All Rights Reserved.
 In case that the application demands a high level of reliability, such as automotive,
 please contact a company representative for further information.

6 RECOMMENDED PCB LAYOUT

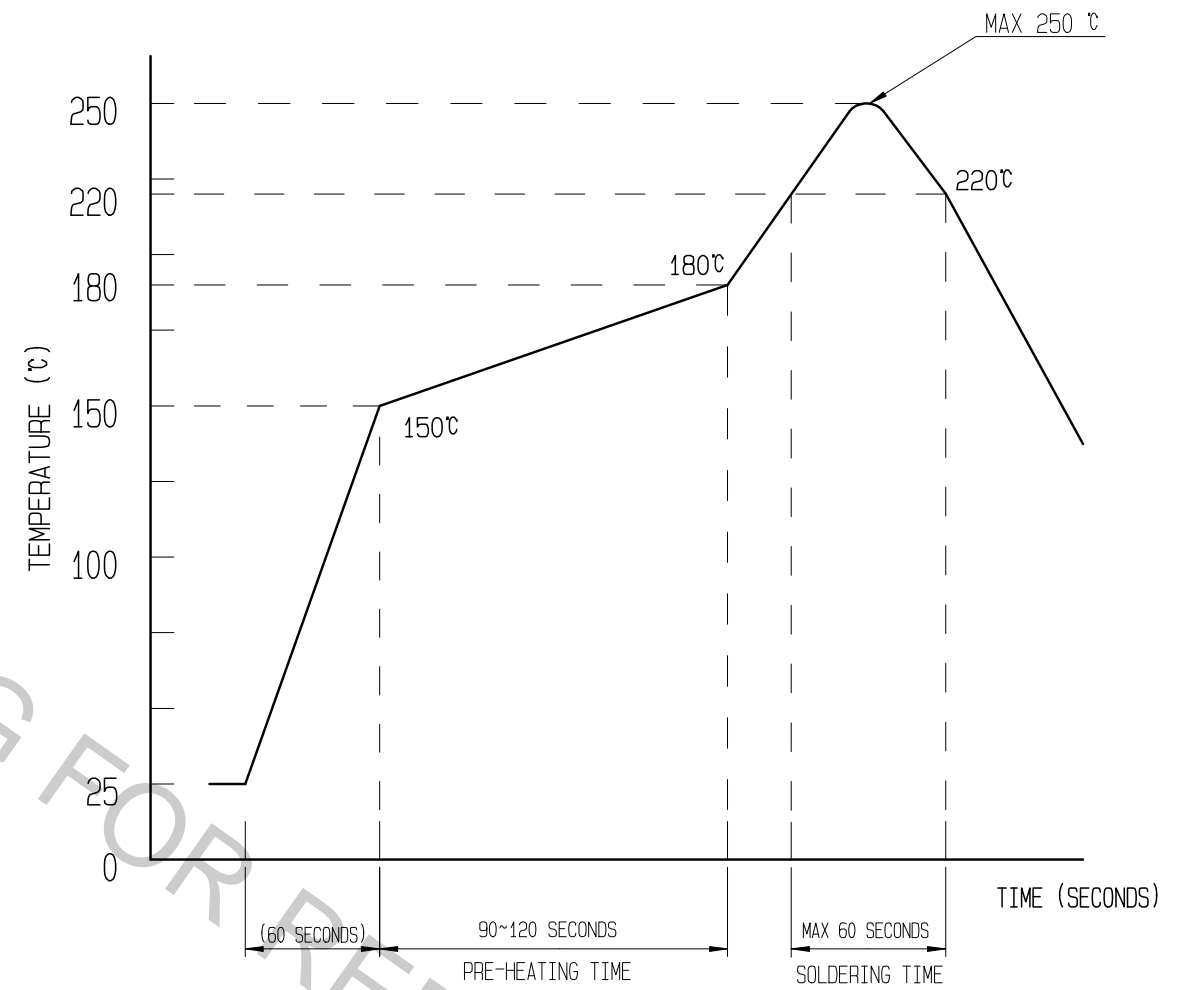


RECOMMENDED METAL MASK DIMENSIONS

MATAL MASK THICKNESS : 100 μm



5 RECOMMENDED REFLOW TEMPERATURE PROFILE USING LEAD-FREE SOLDER PASTE.



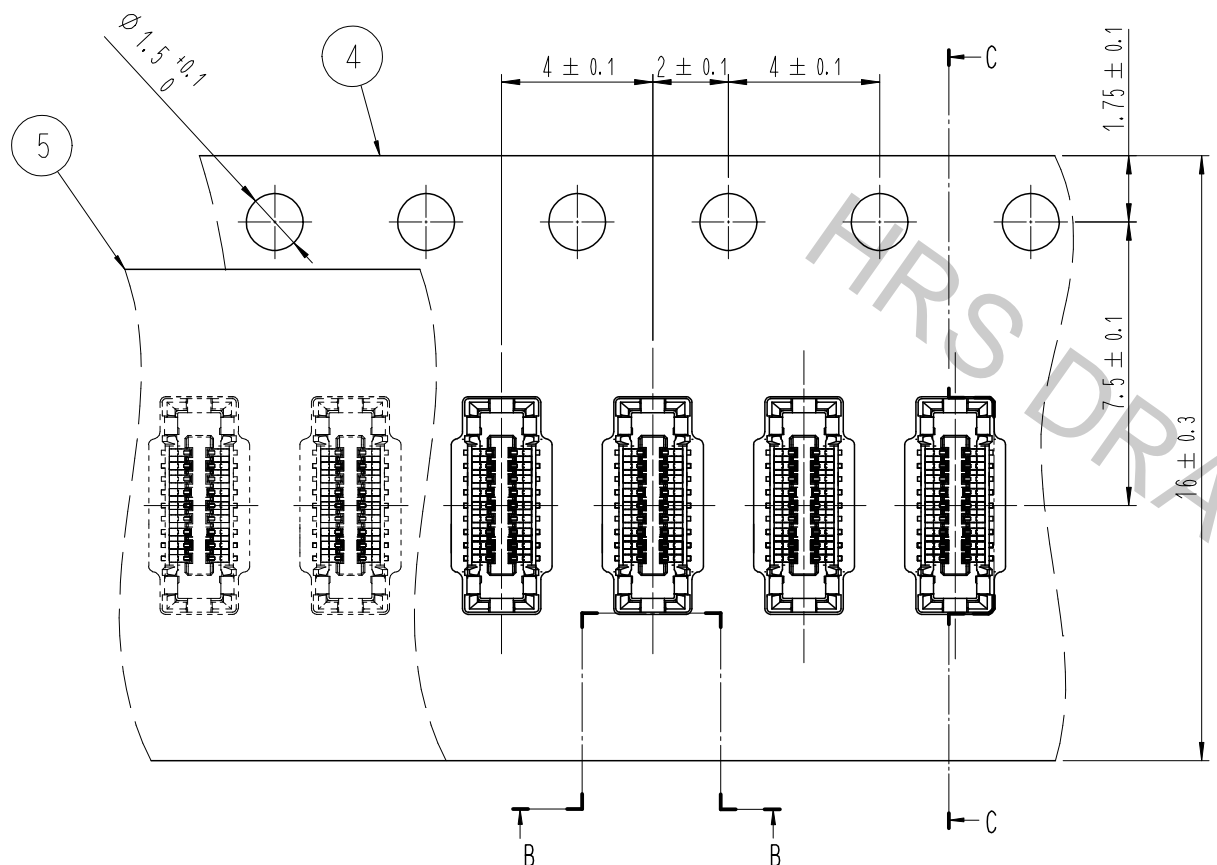
REFLOW METHOD: N₂ REFLOW
 NUMBER OF REFLOW CYCLES: 2 CYCLES MAX.
 1) REFLOW TIME
 DURATION ABOVE 220°C, 60 SEC MAX.
 (PEAK TEMPERATURE: 250°C MAX)
 2) PRE-HEAT TIME
 PRE-HEAT TEMPERATURE (MIN): 150°C
 PRE-HEAT TEMPERATURE (MAX): 180°C
 PRE-HEAT TIME: 90-120 SEC.

- 5 THIS TEMPERATURE PROFILE IS PER THE CONDITIONS SHOWN ABOVE. ADDITIONAL FACTORS, SUCH AS SOLDER PASTE TYPE, PCB SIZE AND OTHER MOUNTED COMPONENTS COULD AFFECT THE PROFILE. THEREFORE, A THOROUGH EVALUATION OF MOUNTING CONDITION IS REQUIRED PRIOR TO PRODUCTION. TEMPERATURE IS MEASURED AT CONTACT LEAD.
- 6 PLEASE CONTACT US IN CASE YOU WILL MAKE DIFFERENT SETTINGS FROM OUR RECOMMENDATION.

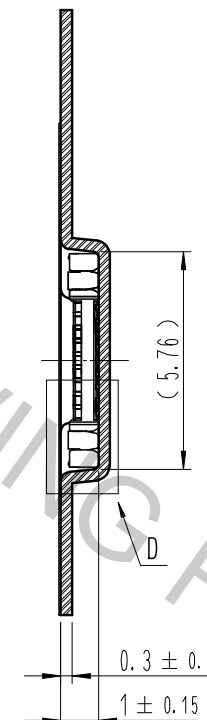
| | | | | |
|-------|-------------|----------------------------|----------|--------------------------|
| | DRAWING NO. | EDC3-632354 | PART NO. | BM23FR0.8-18DS-0.35V(51) |
| | SCALE | 10:1 | CODE NO | CL 6644-0091-0-51 |
| UNITS | mm | HRS HIROSE KOREA CO., LTD. | | 2/3 |

EMBOSSED CARRIER TAPE PACKAGING (5:1)

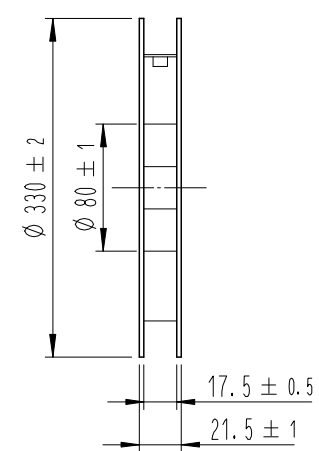
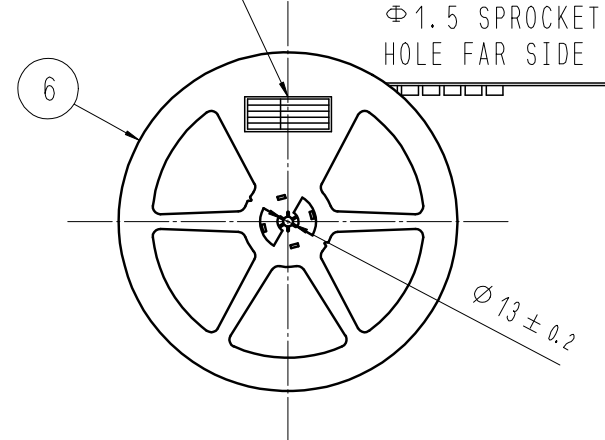
STYLE AND DIMENTION OF REEL (FREE)



C-C (5:1)



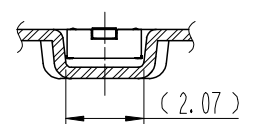
Part No. LABEL



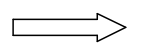
DETAIL OF PART NO. LABEL

| | |
|----------------------|--------------------------|
| SUPPLIER | |
| QUANTITY | |
| PART NO. | |
| CODE NO. | |
| DATE OF MANUFACTURED | |
| 生産月日 | 年 月 日 |
| 図番 | ** ** * |
| 品名 | BM23FR0.8-18DS-0.35V(51) |
| 納入数量 | 10,000個 |
| 納入者 | HIROSE KOREA |

B-B (5:1)

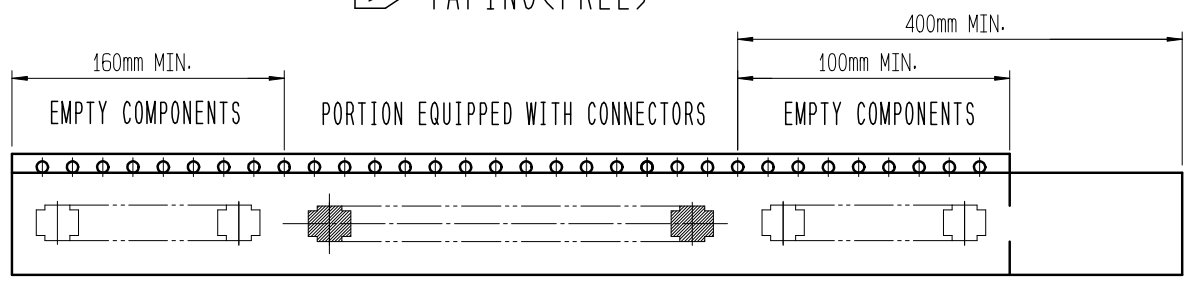


DIRECTION OF UNREELING



D (10:1)

TAPING (FREE)



- 7 . PER REEL 10,000 CONNECTORS.
- 8 . THE DIMENSIONS IN PARENTHESES ARE FOR REFERENCE.
- 9 REFER TO JIS C 0806. IEC-60286-3 (PACKAGING OF COMPONENTS FOR AUTOMATIC HANDLING)

Aug.1.2018 Copyright 2018 HIROSE ELECTRIC CO., LTD. All Rights Reserved. In case that the application demands a high level of reliability, such as automotive, please contact a company representative for further information.

| | | | | |
|----------------------------------|------------------------|------------|----------|--------------------------|
| SCALE 10:1 UNITS mm | DRAWING NO. | EDC3-***** | PART NO. | BM23FR0.8-18DS-0.35V(51) |
| | HIROSE KOREA CO., LTD. | | CODE NO. | CL 6644-0091-0-51 |