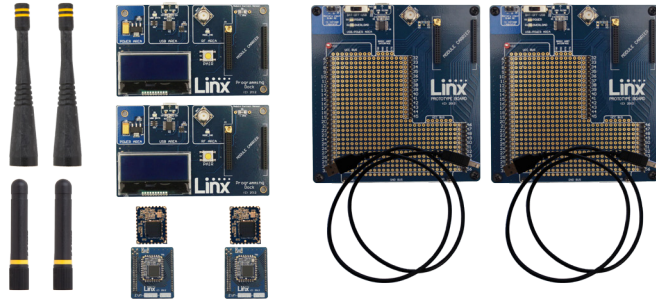


HumPRO™ Series Master Development System

Quick Start Reference

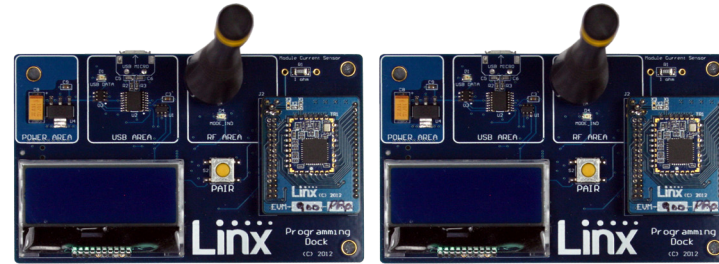


1 Remove Contents



Remove kit contents including development boards, antennas, batteries, modules and USB cables.

2 Set Up the Programming Docks



With the power off, set up boards by inserting EVMs into sockets on the Programming Docks and attaching the antennas.

3 Install the Software



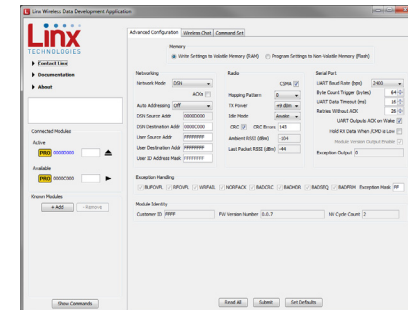
Install the Windows software from the CD that is included with the kit. If already installed, skip this step.

4 Connect the Programming Docks

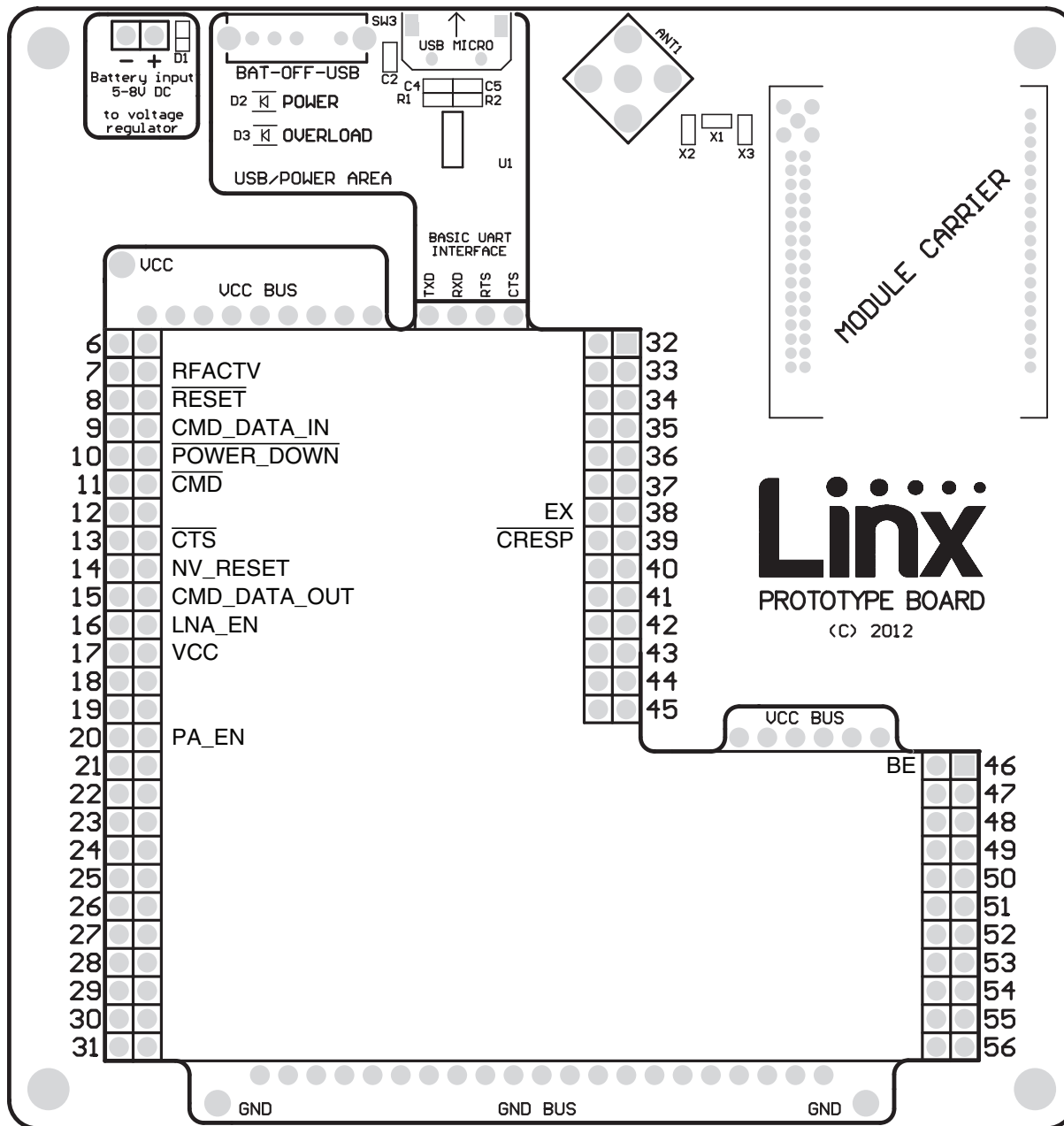


Connect the Programming Docks to a computer with the cables included with the kit. USB drivers are on the CD so install them if prompted by the computer.

5 Start the Software



Start the software. It automatically detects connected modules and reads their configurations.



Linx
 PROTOTYPE BOARD
 (C) 2012

Warning: Installing or removing a Carrier Board while power is applied could cause permanent damage to the module. Either turn off power to the board or unplug the USB cable before installing or removing a Carrier Board