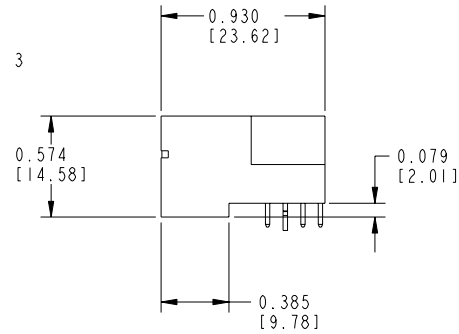
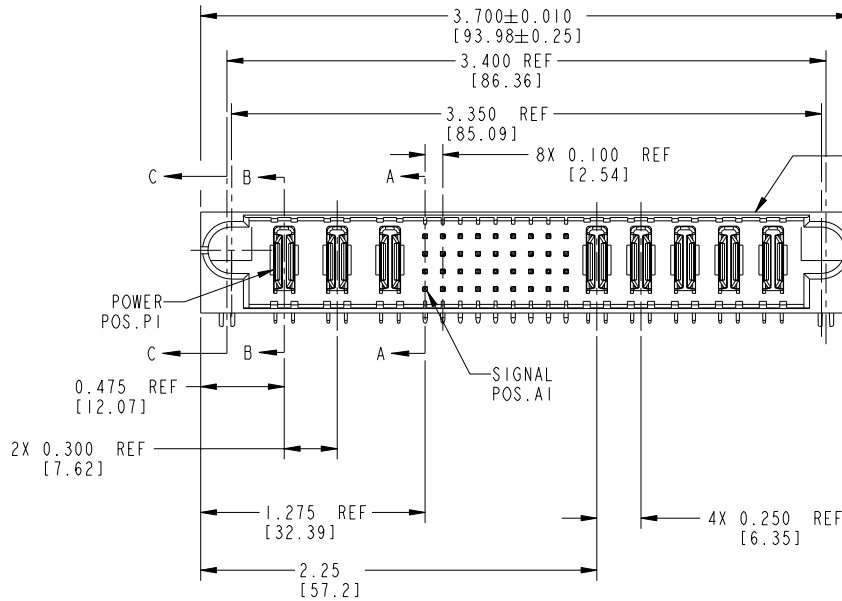
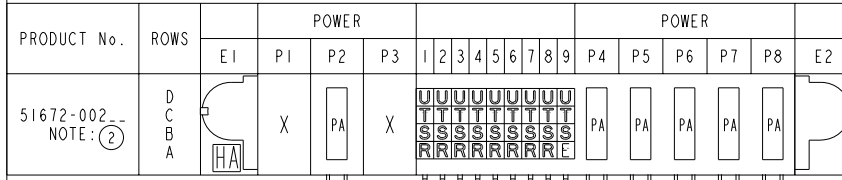
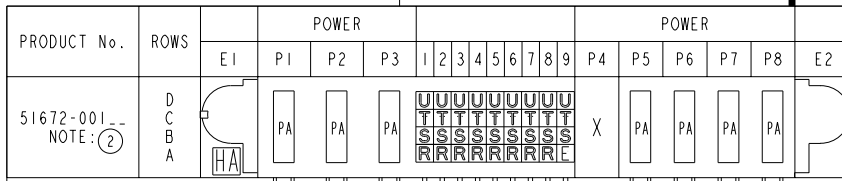


Tous droits strictement réservés. Reproduction ou communication à des tiers interdite sous quelque forme que ce soit sans autorisation écrite du propriétaire. Propriété de c FCI. Droits de reproduction FCI.

All rights strictly reserved. Reproduction or issue to third parties in any form whatever is not permitted without written authority from the proprietor. Property of FCI. Copyright FCI.



CONFIDENTIAL

CODE	DIM "M" ±0.010 [0.25]	CONTACT TYPE
E	0.220 [5.59]	SIGNAL
R	0.270 [6.86]	SIGNAL
S	0.270 [6.86]	SIGNAL
T	0.270 [6.86]	SIGNAL
U	0.270 [6.86]	SIGNAL
HA	N/A [N/A]	HOLD-DOWN
PA	N/A [N/A]	POWER
X		OMITTED

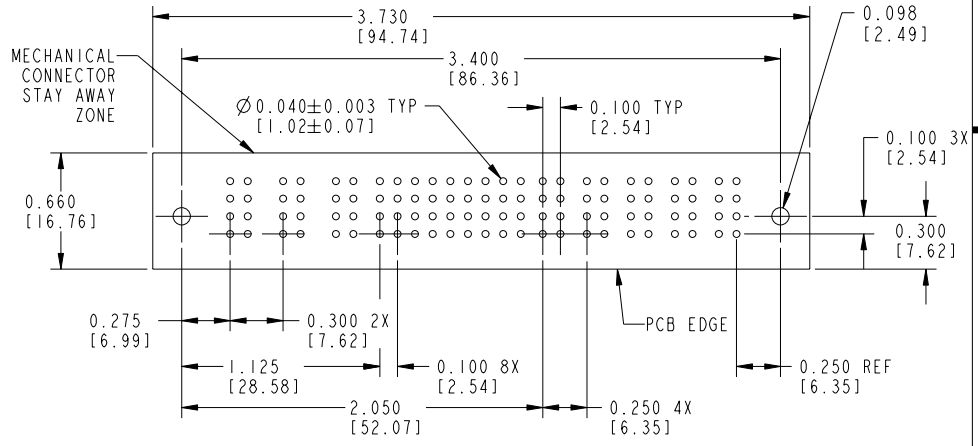
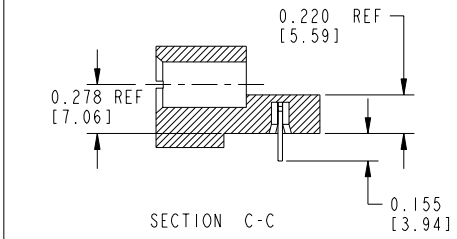
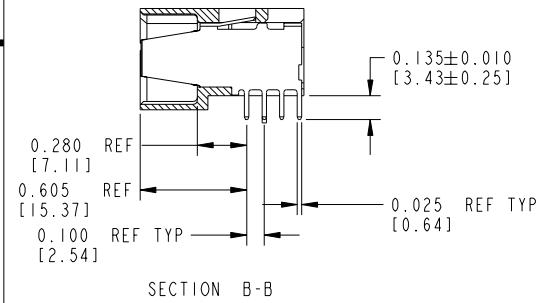
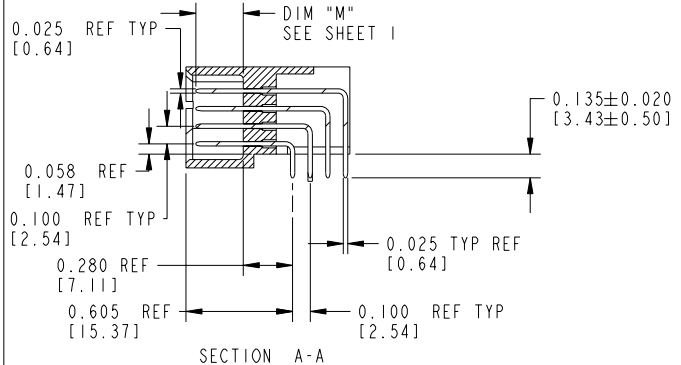
mat'l code				SEE NOTE 1		tolerances unless otherwise specified		CUSTOMER COPY	
ltr	ecn no.	dr	date	linear	.XX±.01/.XX±.3	projection	title 3ACP + 36S + 5P RIGHT ANGLE SOLDER HEADER		
A	V02392	JRW	10-09-00		.XXX±.005/.XX±.13	INCH/MM	product family PWRBLADE code 213		
B	V02924	EKK	12-12-00		.XXX±.0020/.XXX±.051	scale 1:1	size dwg no 51672 sheet 1 of 3		
C	V12544	DAI	01-08-02	angles	0°±2°				
D	DG05-0231	SJ	07/18/05	dr	C. BAROT 12-08-99				
E	DG06-0011	CS	01/09/06	enr	J. BROWN 12-08-99				
				chr	J. BROWN 12-08-99				
				appd	J. BROWN 12-08-99				
sheet index	revision sheet	E 1	E 2	E 3					

cage code 22526

Tous droits strictement réservés. Reproduction ou communication à des tiers interdite sous quelque forme que ce soit sans autorisation écrite du propriétaire. Propriété de c FCI. Droits de reproduction FCI.

All rights strictly reserved. Reproduction or issue to third parties in any form whatever is not permitted without written authority from the proprietor. Property of FCI. Copyright FCI.

PRODUCT NUMBER
51672-XXX_-
NOTE: (2)
SEE SHEET 1



CONFIDENTIAL

mat'l code		SEE NOTE 1		tolerances unless otherwise specified		CUSTOMER COPY		 www.fciconnect.com	
ltr	ecn no.	dr	date	linear	.XX±.01/.XX±.3	projection	title 3ACP + 36S + 5P		
E					.XXX±.005/.XX±.13		RIGHT ANGLE SOLDER HEADER		
				angles	.XXX±.0020/.XXX±.051		product family	PWRBLADE	code
				dr	0°±2°	scale	size	dwg no	213
				enr		1:1	51672		sheet
				chr					2 of 3
				appd					
sheet index	revision sheet								

cage code 22526

Pro/E

PDM: Rev:E

STATUS: Released

Printed: Dec 20, 2010

Tous droits strictement reserves. Reproduction ou communication a des tiers interdite sous quelque forme que ce soit sans autorisation écrite du propriétaire. Propriete de c FCI. Droits de reproduction FCI.

All rights strictly reserved. Reproduction or issue to third parties in any form whatever is not permitted without written authority from the proprietor. Property of FCI. Copyright FCI.

PRODUCT NUMBER
51672-XXX_- NOTE: ②
SEE SHEET 1

CONNECTOR NOTES:

- HOUSING MATERIAL: UL94 V-0 GLASS FILLED HIGH TEMP. THERMOPLASTIC.
- SIGNAL PIN MATERIAL: COPPER ALLOY.
- POWER CONTACT MATERIAL: COPPER ALLOY.
- PLATING:


51672,51672LF,PLATING SPEC SEE PRINT:100064183.

- MANUFACTURER'S NAME, P/N, AND DATE CODE TO APPEAR ON THIS SURFACE.
- PRODUCT SPECIFICATION GS-12-149.

PCB NOTES:

- ALL DIMENSIONS ARE BASIC UNLESS OTHERWISE SPECIFIED.
- ALL THROUGH HOLES ARE LOCATED WITH A TRUE POSITION OF 0.004[0.10]
- ALL HOLE DIAMETERS ARE FINISHED HOLE SIZE
- Ø0.098 [2.49] THROUGH HOLES ARE UNPLATED
- Ø0.0453±0.0010[1.151±0.025] DRILLED HOLES PLATED WITH 0.0003[0.008] MIN SnPb OVER 0.001[0.03] to 0.003[0.08] Cu PLATING TO ACHIEVE A 0.040±0.003[1.02±0.07] HOLE

CONFIDENTIAL

mat'l code				NOTE 1		tolerances unless otherwise specified		CUSTOMER		 www.fciconnect.com		
ltr	ecn no.	dr	date	linear	.XX±.01/.XX±.3		COPY		projection	title		
E					.XXX±.005/.XX±.13		INCH/MM			3ACP + 36S + 5P RIGHT ANGLE SOLDER HEADER		
				angles	.XXX±.0020/.XXX±.051		scale		product family	code		
					0°±2°		1:1			PWRBLADE		213
				dr	C. BAROT	12-08-99	A		size		sheet	
				enr	J. BROWN	12-10-99	51672		dwg no		3	
				chr	J. BROWN	12-08-99			cage code			
				appd	J. BROWN	12-08-99			22526		4	
sheet index	revision sheet											

Pro/E

PDM: Rev:E

STATUS:Released

Printed: Dec 20, 2010