

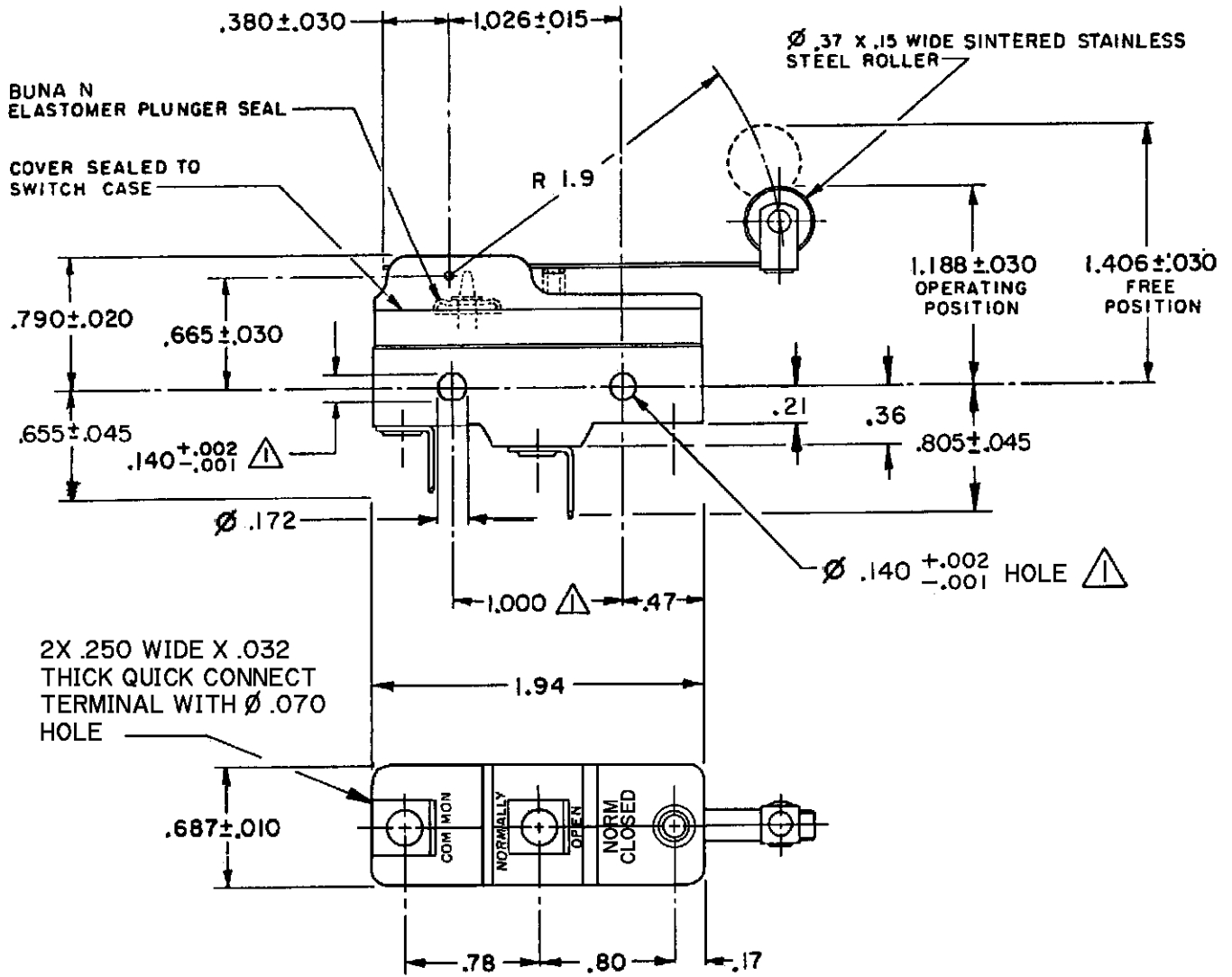
MICRO SWITCH
a Honeywell Division

SWITCH - BASIC

FED. MFG. CODE 91929

X111533-YZ

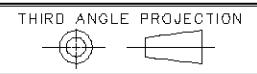
CATALOG LISTING
YZ-2RW82725551-D6
PAGE 1 OF 1
REPLACES PR-24075
RELEASE NO. PR-24075
ISSUE 2
CHECK
REVISIONS
A 200763
C S L
10 JUL 00
CHECK
7 JUN 99
JAF
CHECK
7 JUN 99
DRAWN
G J W
7 JUN 99



- NOTES**
- 1 - MOUNTING HOLES WILL ACCEPT PINS OR SCREWS OF Ø .139 MAX ON 1.000 ± .002 CENTERS
 - 2 - SEALED CONSTRUCTION PROVIDES SPLASH RESISTANCE
 - 3 - CONTACT MATERIAL - GOLD ALLOY

ANSI Y14.5M-1982 APPLIES

THIS DRAWING COVERS A PROPRIETARY ITEM AND IS THE PROPERTY OF MICRO SWITCH, A DIVISION OF HONEYWELL. THIS DRAWING IS NOT TO BE COPIED OR USED WITHOUT THE APPROVAL OF MICRO SWITCH.



CHARACTERISTICS	ELECTRICAL DATA	SCALE	FULL	DO NOT SCALE PRINT
OPERATING FORCE --- 3 1/2 OZ MAX	CONTACT ARRANGEMENT SP NO	UNLESS OTHERWISE SPECIFIED TOLERANCES ARE		
RELEASE FORCE - - - - - 3/4 OZ MIN	L22 1A 125 VAC	ONE PLACE (.0)	± .030	
DIFFERENTIAL TRAVEL --- .004 - .040	L288 L299 L307	TWO PLACE (.00)	± .015	
OVERTRAVEL - - - - - .156 MIN	1A 250V ~ T85 25E3	THREE PLACE (.000)	± .005	
		ANGLES	±	
		WEIGHT	.076 LB	