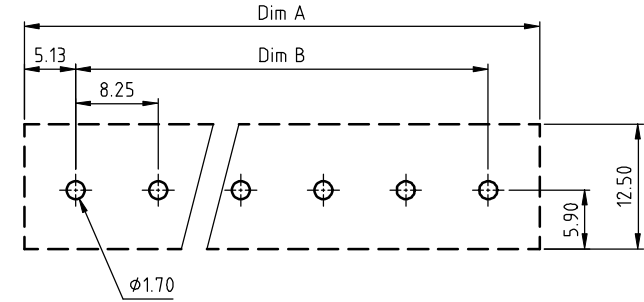
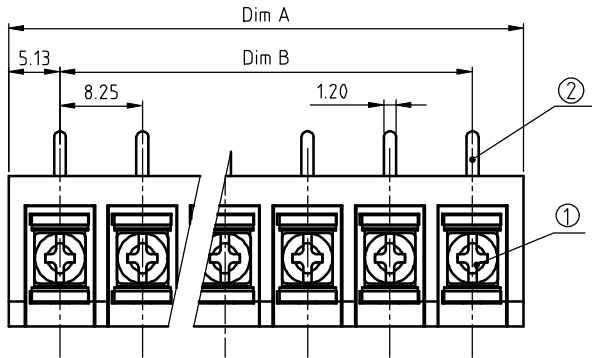
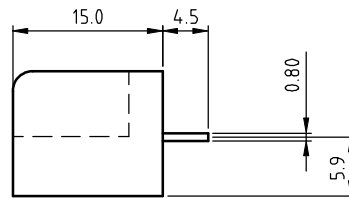
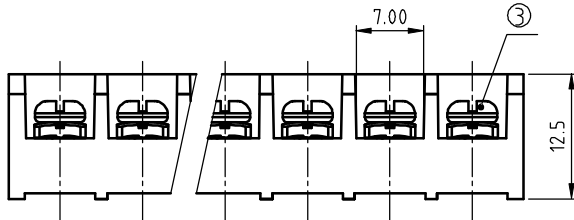


PRODUCT NUMBER	PITCH
YK332xx0x0J0G	8.25 mm



RECOMMENDED P.C.B. LAYOUT  
BOTTOM VIEW

MATERIALS & ELECTRICAL  
 RATED VOLTAGE & CURRENT: cULus / CQC 300 V, 20 A / 300 V, 32 A  
 WITHSTAND VOLTAGE: AC 2500V/Min  
 INSULATION RESISTANCE: 1000 MΩ OR MORE AT DC 500 V  
 OPERATING TEMPERATURE RANG: -40 °C +115 °C  
 SCREW TORQUE VALUE: 8.8 Lb-In  
 WIRE RANGE: 22 - 12 AWG  
 1) HOUSING: Thermoplastic, UL 94 V-0 BLACK  
 2) TERMINAL: BRASS, 0.8t  
 3) TERMINAL SCREWS: STEEL,M3  
 APPROVAL:



A

A

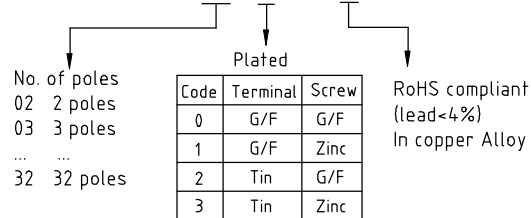
DIMENSION

Dim A	Nx8.25+2.0
Dim B	(N-1)x8.25

N=Number of poles

Poles	Tolerance
2p-5p	±0.20
6p-10p	±0.25
11p-16p	±0.35
17p-24p	±0.40
25p-32p	±0.50

PART NO.: YK 332xx 0 x 0 JOG



B

B

mat'l. code		surface ASME Y14.5	tolerance ASME Y14.5	projection 	product family TERMINAL BLOCK
ltr	ecn no	dr	date	title TERMINAL BLOCK	
tolerances unless otherwise specified				MM	BARRIER TYPE
angles	X.±0.5		scale		
flat	X.X±0.3		dwg no		
X'±1"	X.XX±0.1		sheet 1 of 1 size		
dr	EVAN LU	061614		A4	
enr	EVAN LU	061614		YK332xx0x0J0G	
chr	HANKE FENG	061614		type	
appd	SHI JUN	061614		CUSTOMER Drawing	
sheet index	revision sheet	A	1		