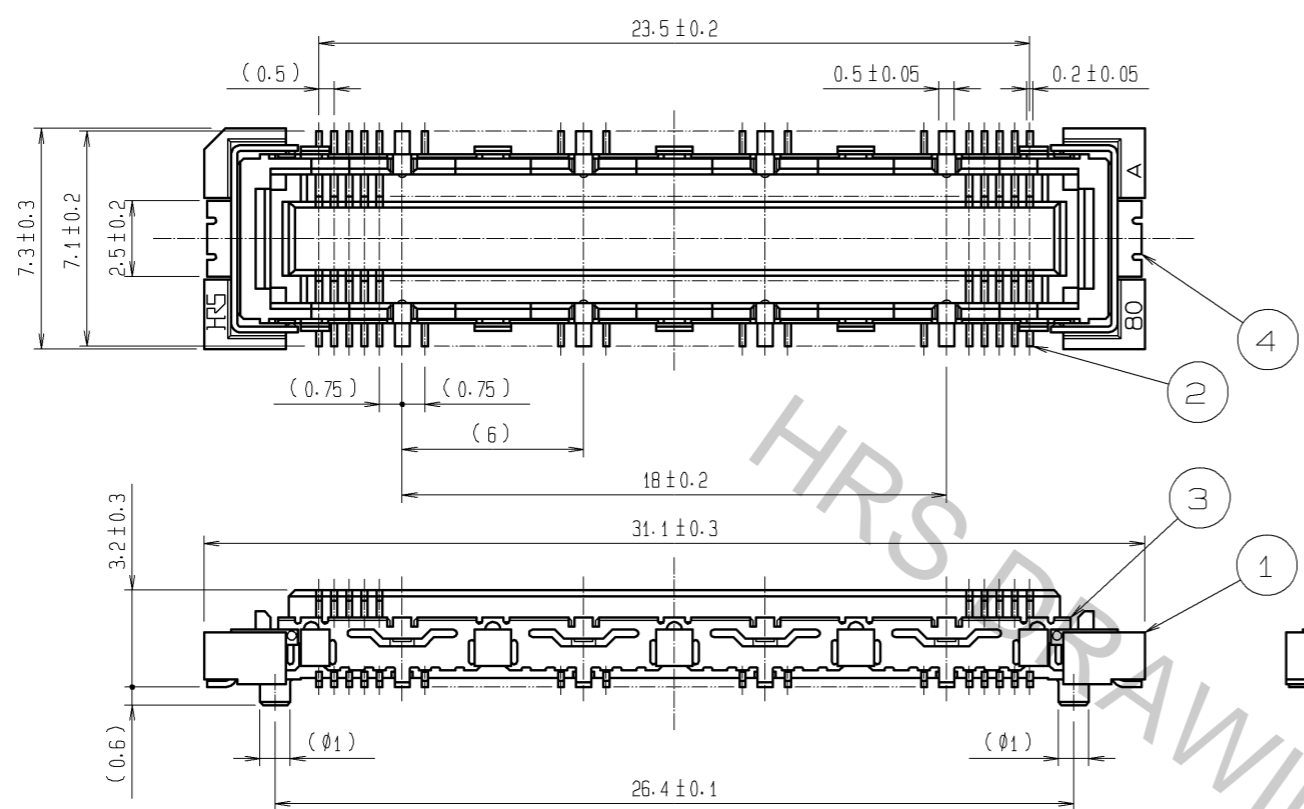


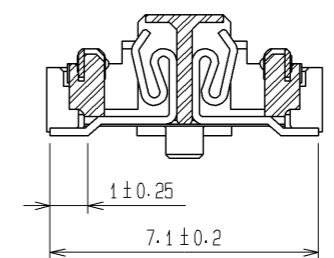
Apr.1.2017 Copyright 2017 HIROSE ELECTRIC CO., LTD. All Rights Reserved.

1 2 3 4 5 6 7 8

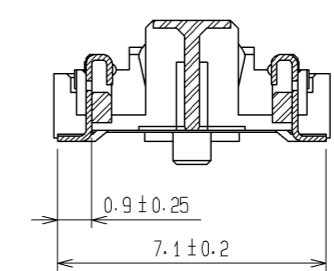
A  
B  
C  
D  
E  
F



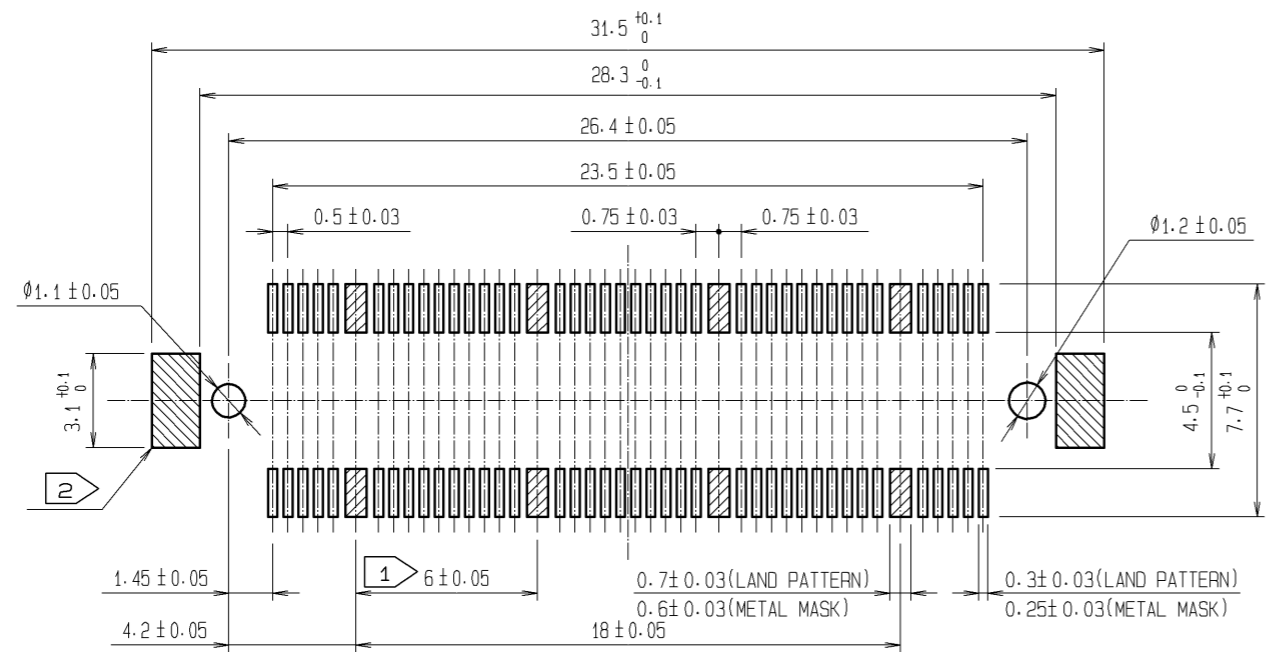
CROSS CUT SECTION - SIGNAL(5:1)



CROSS CUT SECTION - GROUND(5:1)



RECOMMENDED LAND PATTERN DIMENSION OF PCB  
(RECOMMENDED METAL MASK THICKNESS:0.15mm)



- NOTES
- 1 8 HATCHED PARTS:GROUND CIRCUIT.
  - 2 2 HATCHED PARTS:GROUND CIRCUIT.
  - 3 SMT LEAD-COPLANARITY:0.1 MAX.
  - 4 THIS PRODUCT HAS NO POLARITY TO PATTERN FOR MOUNTING.
  - 5 THE DIMENSIONS IN PARENTHESES ARE FOR REFERENCE.

3, 4	PHOSPHOR BRONZE	TIN-PLATING
2	PHOSPHOR BRONZE	CONTACT AREA : GOLD 0.1µm min. LEAD AREA : GOLD FLASH UNDER PLATING : NICKEL 1µm min.
NO.	MATERIAL	FINISH , REMARKS

1	LCP	BEIGE UL94V-0					
NO.	MATERIAL	FINISH , REMARKS	NO.	MATERIAL	FINISH , REMARKS		
UNITS	mm	SCALE	4 : 1	COUNT	DESCRIPTION OF REVISIONS	DESIGNED	CHECKED
					APPROVED : HS. OKAWA 08.06.26		
					CHECED : HT. YAMAGUCHI 08.06.25		
					DESIGNED : SY. KAMIGA 08.06.23		
					DRAWN : HK. SUNADORI 08.06.18		
DRAWING NO. EDC3-151976-25						DATE	
PART NO. FX10A-80S/8-SV(71)						CODE NO. CL570-0201-4-71	
HRS HIROSE ELECTRIC CO., LTD.						1/1	