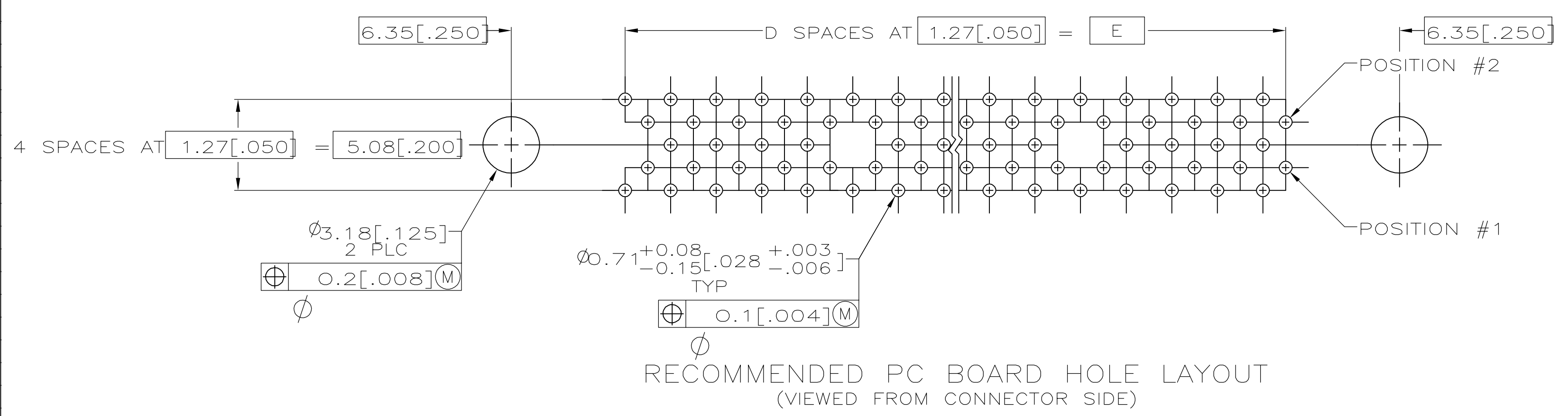
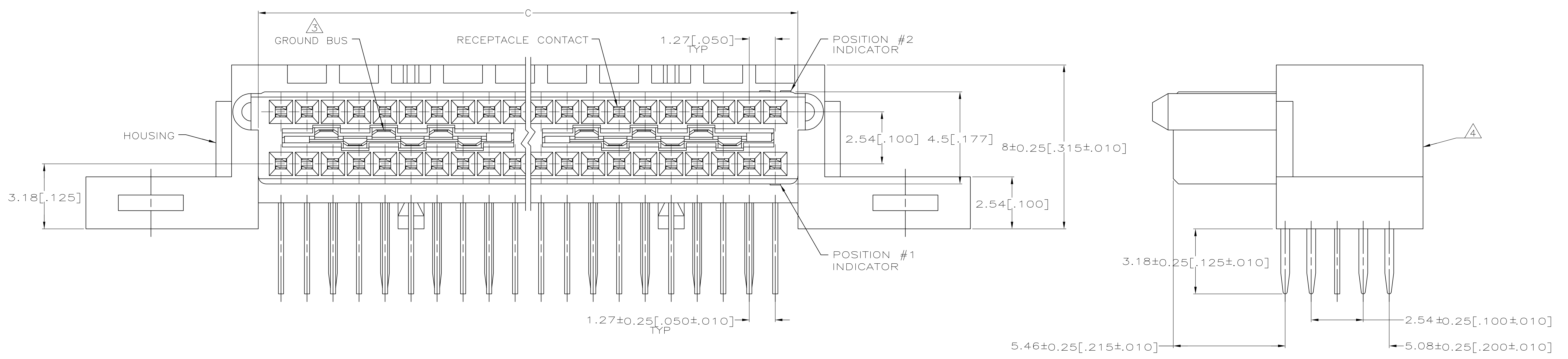


- 1 MOLDING PARTS: HIGH TEMPERATURE THERMOPLASTIC, COLOR NATURAL.  
RECEPTACLE CONTACTS: PHOSPHOR BRONZE.  
GROUND BUSSES: PHOSPHOR BRONZE.
- 2 RECEPTACLE CONTACTS: 0.00076[.000030] MIN GOLD IN CONTACT AREA, 0.00254-0.00762[.000100-.000300] TIN-LEAD ON SOLDER TAIL, ALL OVER 0.00127-0.00254[.000050-.000100] NICKEL ON ENTIRE CONTACT.  
GROUND BUSSES: 0.00076[.000030] MIN GOLD IN CONTACT AREA, 0.00254-0.00762[.000100-.000300] TIN-LEAD ON SOLDER TAIL, ALL OVER 0.00127-0.00254[.000050-.000100] NICKEL ON ENTIRE BUS.
- 3 ONE GROUND BUS WITH 4 TAILS PER EACH 20 RECEPTACLE CONTACTS.
- 4 ASSEMBLIES 140 POSITIONS OR SMALLER HAVE A ONE PIECE ORGANIZER. ASSEMBLIES 160 POSITIONS OR LARGER HAVE MULTIPLE ORGANIZERS OF 40 AND/OR 60 POSITIONS.



|          |               |     |               |               |               |           |             |
|----------|---------------|-----|---------------|---------------|---------------|-----------|-------------|
| OBSOLETE | 151.13[5.950] | 119 | 153.34[6.037] | 163.83[6.450] | 170.18[6.700] | 240       | 1-536297-1  |
| OBSOLETE | 138.43[5.450] | 109 | 140.64[5.537] | 151.13[5.950] | 157.48[6.200] | 220       | 1-536297-0  |
|          | 125.73[4.950] | 99  | 127.94[5.037] | 138.43[5.450] | 144.78[5.700] | 200       | 536297-9    |
| OBSOLETE | 113.03[4.450] | 89  | 115.24[4.537] | 125.73[4.950] | 132.08[5.200] | 180       | 536297-8    |
| OBSOLETE | 100.33[3.950] | 79  | 102.54[4.037] | 113.03[4.450] | 119.38[4.700] | 160       | 536297-7    |
|          | 87.63[3.450]  | 69  | 89.84[3.537]  | 100.33[3.950] | 106.68[4.200] | 140       | 536297-6    |
|          | 74.93[2.950]  | 59  | 77.14[3.037]  | 87.63[3.450]  | 93.98[3.700]  | 120       | 536297-5    |
|          | 62.23[2.450]  | 49  | 64.44[2.537]  | 74.93[2.950]  | 81.28[3.200]  | 100       | 536297-4    |
|          | 49.53[1.950]  | 39  | 51.74[2.037]  | 62.23[2.450]  | 68.58[2.700]  | 80        | 536297-3    |
|          | 36.83[1.450]  | 29  | 39.04[1.537]  | 49.53[1.950]  | 55.88[2.200]  | 60        | 536297-2    |
|          | 24.13[.950]   | 19  | 26.34[1.037]  | 36.83[1.450]  | 43.18[1.700]  | 40        | 536297-1    |
|          | E             | D   | C             | B             | A             | NO OF POS | PART NUMBER |

THIS DRAWING IS A CONTROLLED DOCUMENT.

|                         |  |                        |  |
|-------------------------|--|------------------------|--|
| DIMENSIONS: mm [INCHES] | TOLERANCES UNLESS OTHERWISE SPECIFIED: | DIN J GERACE 1-4-93    | tyco Electronics Tyco Electronics Corporation Harrisburg, PA 17105-3608        |
| 0 PLC ± -               | 1 PLC ± -                              | 1-4-93                 | RECEPTACLE ASSEMBLY, RIGHT ANGLE, 3.18[.125] TAIL, BOARD TO BOARD, MICRO-STRIP |
| 2 PLC ± -               | 3 PLC ± -                              | 1-4-93                 | SIZE: A1   |
| 4 PLC ± -               | ANGLES ± -                             | NAME: D SINISI         | SCALE: 10:1  |
|                         |  | PRODUCT SPEC: 108-1272 | SHEET: 1 OF 1  |
|                         |  | APPLICATION SPEC: -    | REV: K1  |
| MATERIAL: 1             | FINISH: 2                              | WEIGHT: -              | CUSTOMER DRAWING   |
|                         |  | 00779                  | SCALE: 10:1  |
|                         |  | 536297                 | SHEET: 1 OF 1  |
|                         |  |                        | REV: K1  |