

SCHEMATIC

SPECIFICATIONS

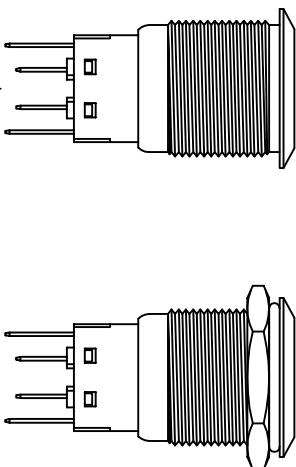
FUNCTION: 2P2T ON-ON
 RATING: 2A 48VDC
 ILLUMINATION VOLTAGE: 2.8V 20mA
 CONTACT RESISTANCE: Min.: Max. at 1A 12VDC
 INSULATION RESISTANCE: 1,000MΩ Min. at 500VDC
 DIELECTRIC STRENGTH: 2,000VAC Min. for 1 Minute
 ELECTRICAL LIFE: 50,000 Cycles
 MECHANICAL LIFE: 1,000,000 Cycles
 TEMPERATURE: Operating: -20°C to 70°C
 INGRESS PROTECTION: IP65
 APPROVALS: ROHS COMPLIANT

MATERIALS

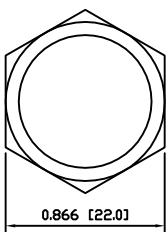
BUSHING: Stainless Steel (304)
 BASE: Polycarbonate (PC)
 POLYETHYLENE TEREPHTHALATE (PET), UL94 V-2
 ACTUATOR: Stainless Steel (304)
 Polycarbonate (PC)
 HARDWARE: Nickel Plated Brass (H59)
 SEALING: Silicone Rubber
 INNER ASSEMBLY: Polyoxymethylene (POM)
 Phosphor Bronze
 SPRING: Spring Steel
 CONTACTS: Silver/Cadmium Oxide (AgCdO)
 TERMINALS: Silver Plated Brass (H62)
 Silver Plated Phosphor Bronze
 O-RING: Silicone Rubber

COLORS AND FINISH

BEZEL: Stainless Steel
 Machine Finish
 ACTUATOR: Stainless Steel
 Machine Finish
 ILLUMINATION: Green (Forward)
 Green (Reverse)
 MARKING: None

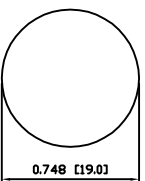


EXPLODED VIEW

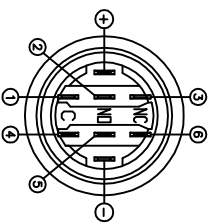


ASSEMBLED VIEW

SUGGESTED PANEL CUTOUT



MAXIMUM PANEL THICKNESS: 0.433 [11.0mm]



REV.	DATE	BY
A	09/07/24	CAB
B	09/07/24	CAB
A	09/10/19	CAB

THE INFORMATION CONTAINED IN THIS DOCUMENT IS PROPRIETARY TO E-SWITCH AND IS NOT TO BE COPIED OR TRANSMITTED

REV.	DESCRIPTION
A	INITIAL RELEASE

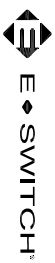
REV.	DATE	BY
A	10/07/09	BR

SCALE: DRAWING NOT TO SCALE

DRAWING NUMBER: 52-PV4F2G0SS331

DATE: July 9, 2010

REVISION: A



PV4F2G0SS-331