

INTRODUCTION:

Adam Tech Flat Cable IDC D-Sub connectors are a popular interface for many I/O and cable assembly applications. Offered in 9, 15, 25, 37 and 50 positions they are an excellent choice for a low cost industry standard connection that terminates .050" flat cable quickly, easily and compactly. These connectors are manufactured with precision stamped contacts offering a choice of contact plating and a wide selection of mating and mounting options.

FEATURES:

- Quickly terminates to flat cable
- Industry standard compatibility
- Durable metal shell design
- Integral strain relief available
- Precision formed contacts
- Variety of Mating and mounting options

MATING CONNECTORS:

Adam Tech D-Subminiatures and all industry standard D-Subminiature connectors.

SPECIFICATIONS:

Material:

Insulator: PBT, 30% glass reinforced, rated UL94V-0
 Insulator Colors: Black (Blue optional)
 Contacts: Phosphor Bronze
 Shell: Steel, Tin or Zinc plated
 Hardware: Brass, Nickel plated

Contact Plating:

Gold over Nickel underplate on contact area.

Electrical:

Operating voltage: 250V AC / DC max.
 Current rating: 5 Amps max.
 Contact resistance: 20 mΩ max. initial
 Insulation resistance: 5000 MΩ min.
 Dielectric withstanding voltage: 1000V AC for 1 minute

Mechanical:

Insertion force: 0.75 lbs max
 Extraction force: 0.44 lbs min
 Recommended cable size: 28 to 30 Awg.

Temperature Rating:

Operating temperature: -55°C to +105°C

PACKAGING:

Anti-ESD plastic trays

APPROVALS AND CERTIFICATIONS:

UL Recognized & CSA Certified, File no. E224053



ORDERING INFORMATION

DB25

SF

M

2

SHELL SIZE/ POSITIONS

DE09 = 9 Position
DA15 = 15 Position
DB25 = 25 Position
DC37 = 37 Position
DD50 = 50 Position

MOUNTING OPTIONS

1 = .130" mounting holes
2 = #4-40 threaded
 flush inserts
 (Metal Shell only)

CONTACT TYPE

PF = Plug, IDC
SF = Socket, IDC

BODY CONSTRUCTION

M = Metal shell
P = All plastic body

STRAIN RELIEF

PART NO.:

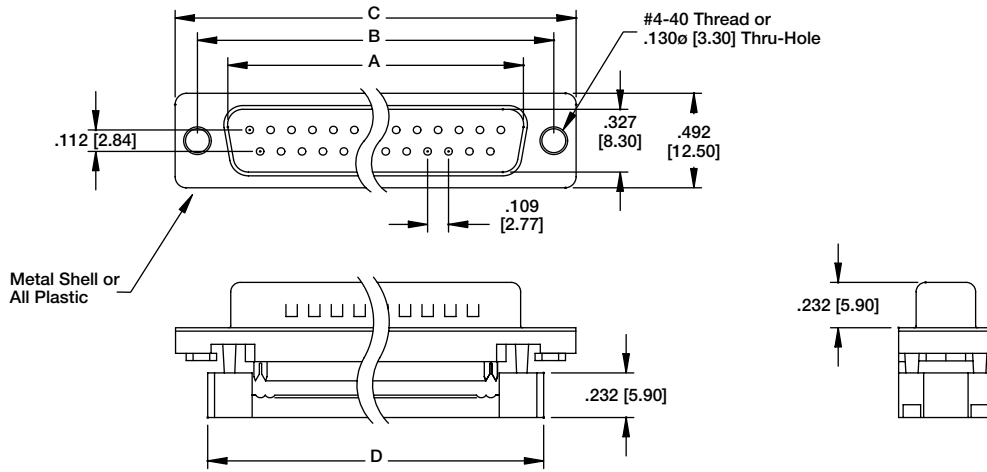
DSR-09 = 9 Position
DSR-15 = 15 Position
DSR-25 = 25 Position
DSR-37 = 37 Position
DSR-50 = 50 Position

OPTIONS:

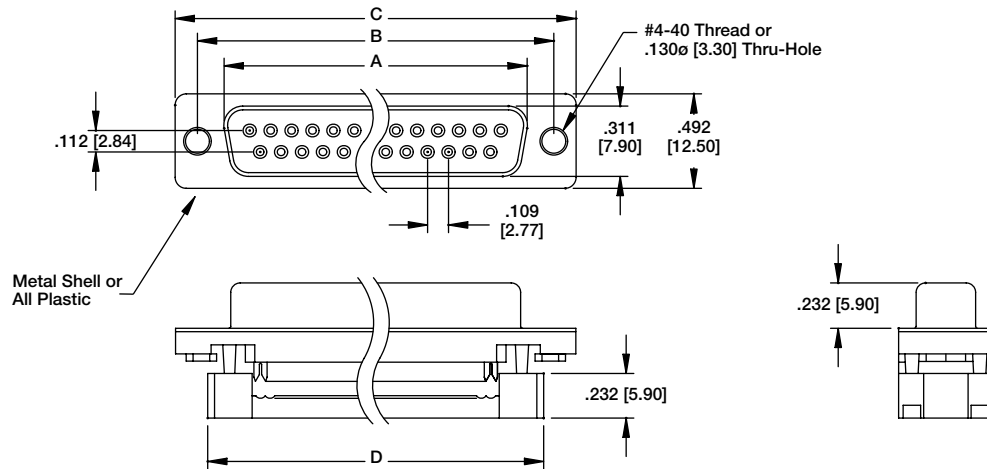
Add designator(s) to end of part number
15 = 15 μin. gold in contact area
30 = 30 μin. gold in contact area
BU = Blue color insulator



PLUG



SOCKET



Unit: Inch [mm]

| Positions | PLUG | SOCKET | DIMENSIONS | | |
|-----------|---------------|---------------|---------------|---------------|---------------|
| | A | A | B | C | D |
| 9 | .666 [16.92] | .643 [16.33] | .984 [24.99] | 1.213 [30.81] | .883 [22.44] |
| 15 | .994 [25.25] | .971 [24.66] | 1.312 [33.32] | 1.541 [39.14] | 1.213 [30.81] |
| 25 | 1.534 [38.96] | 1.511 [38.38] | 1.852 [47.04] | 2.088 [53.04] | 1.755 [44.57] |
| 37 | 2.182 [55.43] | 2.159 [54.84] | 2.500 [63.50] | 2.729 [69.32] | 2.414 [61.32] |