

INTRODUCTION:

Adam Tech FCS Series .100" IDC Sockets are extremely popular, low profile, precision designed flat cable sockets that feature .100" pin to pin and row to row centerlines. These sockets quickly and easily mass terminate flat cable in one simple step. Their versatility allows them to mate with a multitude of .025" sq. post pin headers. Our superior selectively gold plated contact design provides a smooth high pressure wiping action to ensure excellent continuity. They are used with a single layer of .050" flat cable. Their small size, light weight, low cost and high density make them ideal for use in many applications.

FEATURES:

Choice of Single or Dual beam contact design
Low Profile and High Density
Uses Single layer .050" standard Flat Cable
Quickly and easily mass terminates Flat Cable
Smooth High Pressure Wiping Contacts

MATING CONNECTORS:

Adam Tech .100" BHR series box headers and PH2 series pin headers

SPECIFICATIONS:

Material:

Insulator: PBT, glass reinforced, rated UL94V-0
Insulator Color: Black
Contacts: Phosphor Bronze

Contact Plating:

Gold flash (30 μ in optional) over nickel underplate on contact area, tin over copper underplate on IDC area

Electrical:

Operating voltage: 250V AC max.
Current rating: 1 Amp max.
Contact resistance: 30 m Ω max. initial
Insulation resistance: 1000 M Ω min.
Dielectric withstanding voltage: 500V AC for 1 minute

Mechanical:

Insertion force: FCS-D2: 0.5 lbs per contact max.
Withdrawal force: FCS-D2: 0.094 lbs per contact min.
Recommended wire size: 28 Awg stranded
Cable retention: 28 lbs. min axial force per inch.
Mating durability: 500 cycles min.

Temperature Rating:

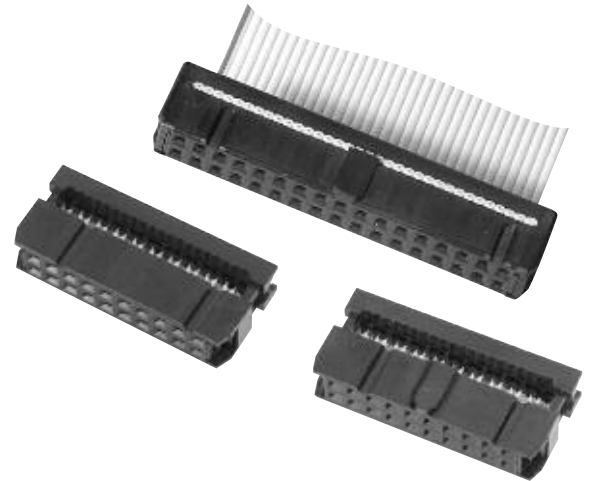
Operating temperature: -40°C to +105°C

PACKAGING:

Anti-ESD plastic trays

SAFETY AGENCY APPROVALS:

UL Recognized & CSA Certified, File no. E224053



ORDERING INFORMATION

FCS

50

SG

SERIES INDICATOR

FCS = Flat Cable
IDC Socket
with standard
single wipe
contacts

FCS-D2 = Flat cable
IDC socket
with dual
wipe contacts

PLATING

SG = Selective
gold plating

POSITIONS

06, 08, 10, 12, 14, 16, 20,
24, 26, 30, 34, 40, 44, 50,
56, 60, 62, 64

Note: Mating box headers
for this series
located on page 299

STRAIN RELIEF:

FSR-XX (XX = No. of Positions)

PULL TABS:

PT-XX (No. of positions)

KEYING PLUGS:

FCS-K (Key plugs can also be molded into connector,
consult factory)

OPTIONS:

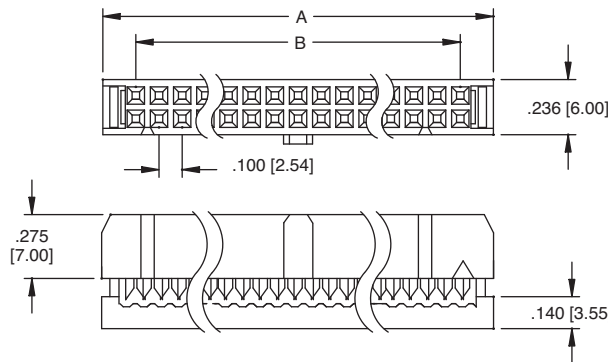
Add designator(s) to end of part number

30 = 30 μ in gold in contact area

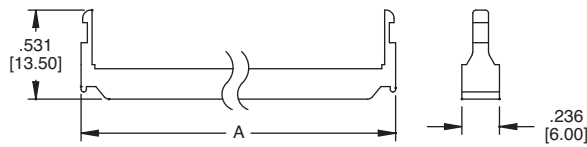
GY = Gray color insulator

N = No polarization bump

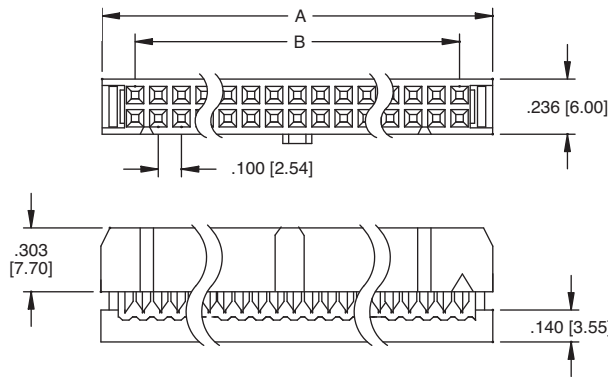
**FCS
SINGLE WIPE CONTACT**



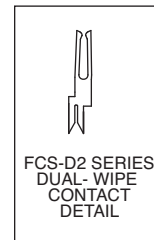
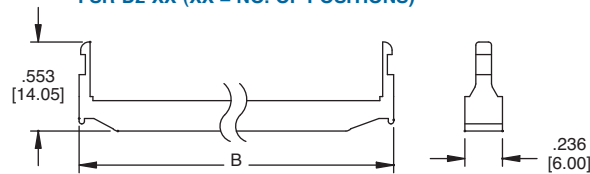
**FCS STRAIN RELIEF:
FSR-XX (XX = NO. OF POSITIONS)**



**FCS-D2
DUAL WIPE CONTACT**



**FCS-D2 STRAIN RELIEF:
FSR-D2-XX (XX = NO. OF POSITIONS)**



DIMENSIONS																		
POSITIONS	6	8	10	12	14	16	20	24	26	30	34	40	44	50	56	60	62	64
B	0.200 [5.08]	0.300 [7.62]	0.400 [10.16]	0.500 [12.70]	0.600 [15.24]	0.700 [17.78]	0.900 [22.86]	1.100 [27.94]	1.200 [30.48]	1.400 [35.56]	1.600 [40.64]	1.900 [48.26]	2.100 [53.34]	2.400 [60.96]	2.700 [68.58]	2.900 [73.66]	3.000 [76.20]	3.100 [78.74]
A	0.480 [12.19]	0.580 [14.73]	0.680 [17.27]	0.780 [19.81]	0.880 [22.35]	0.980 [24.89]	1.180 [29.97]	1.380 [35.05]	1.480 [37.59]	1.680 [42.67]	1.880 [47.75]	2.180 [55.37]	2.380 [60.45]	2.680 [68.07]	2.980 [75.69]	3.180 [80.77]	3.280 [83.31]	3.380 [85.85]