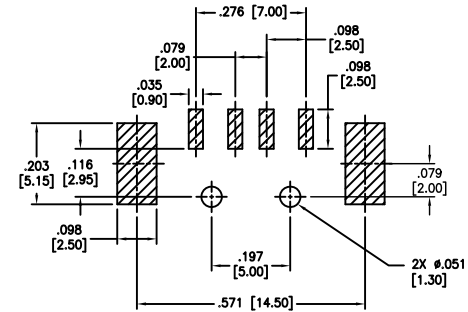
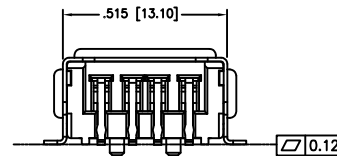
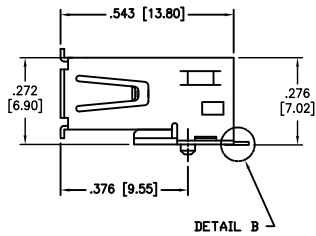
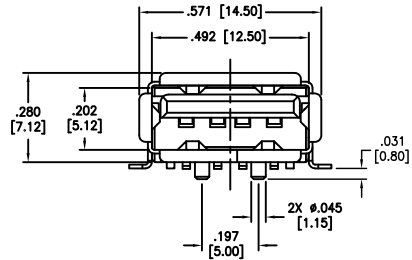
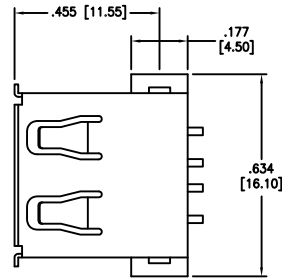
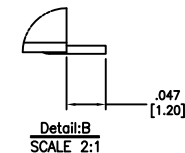
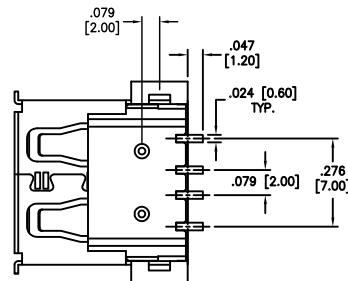


APPROVED: \_\_\_\_\_  
 DATE: \_\_\_\_\_ TITLE: \_\_\_\_\_

Rev	AWO #	Description	Date	Appr
-		RELEASED	11/03/04	
A		UPDATED	3/27/08	
B		REVISED SPEC.	5/30/11	
C		REVISED DIM.	6/23/11	
D		REVISED DIM.	7/24/14	AY/YC
E		REVISED DIM.	10/15/14	AY/GC
F		UPDATED SPEC.	8/19/15	HR/NC
G		UPDATED SPEC.	2/18/16	HR/AY1



RECOMMENDED  
PCB LAYOUT



**SPECIFICATIONS:**

Material:  
 Insulator: LCP, rated UL 94V-0  
 Insulator color: Black  
 Contacts: Brass  
 Shell: Copper Alloy, nickel/Tin plated  
 Contact Plating:  
 Gold flash over Nickel on mating area,  
 Tin over Copper underplate on tails.  
 Electrical:  
 Operating voltage: 30 VAC max.  
 Current rating: 1.5 Amp max.  
 Contact resistance: 30 mohms max.  
 Insulation resistance: 1000 Mohms min. @ 500 VDC  
 Dielectric withstanding voltage: 500 VAC for 1 minute  
 Mechanical:  
 Insertion force: 35 Newtons max.  
 Withdrawal force: 10 Newtons min.  
 Temperature Rating:  
 Operating temperature: -40°C to +85°C  
 Environmental:  
 Lead free, RoHS compliant.



UNLESS OTHERWISE SPECIFIED ALL DIMENSIONS ARE INCHES [MM] TOLERANCES: EXCEPT AS NOTED INCHES HOLES		<b>ADAM TECH</b> 909 Rahway Avenue, Union, NJ 07083 Phone: 908-687-5000 Fax: 908-687-5710	
.X ± .10	∅.X ± .10		
.XX ± .020	∅.XX ± .015	TITLE USB TYPE A, RIGHT ANGLE, TRUE SURFACE MOUNT	
.XXX ± .015	∅.XXX ± .010		
APPROVALS		DATE	
DRAWN	SS	11/03/04	
CHECKED			
APPROVED			
SIZE X	PART NO. USB-A-S-RA-TSMT	REV. G	
REF: S00005C	SCALE: NTS	SHEET 1 OF 1	