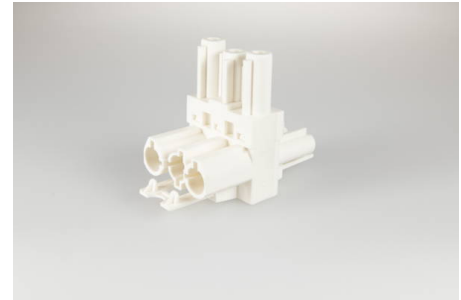




Connectors System AC 166®  
Distributor

AC 166 GVT 3/ 3 white

T-Form 1 input terminal/2 output terminals, 3 pole, white, coding: 1 (mains), voltage rating: 250 V, current rating: 20 A



Order Info

reference number (ref. no.)	167153
Applications	Lighting, Installation
PU	100
EAN	4028012102860

Type

type	T-Form 1 input terminal/2 output terminals
number of poles	3 pole
colour	white
coding	1 (mains)
PE function	yes
protection against incorrect plugging	yes
latch	yes

Technical Data

voltage rating	250 V
current rating	20 A
insulating material	PA 6.6
contact material	brass
impulse voltage rating	4.0 kV
flammability rating	V-2
max. Ambient Temperature Operation	100 °C
IP code	IP20
IP code when plugged	IP40
Approbation EN61535	AC166-G_Leitungen_EN61535_20121212_20180725_VDE_ENEC_4C
Approbation UL	160_163_AC164_AC166_20011003_20170727_UL_E220480_Sec.1-(