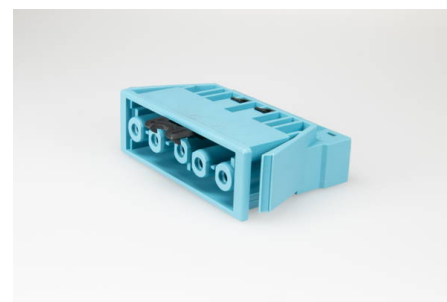




## Connectors System AC 166® Panel Mounting

### AC 166 GEBU/ 5 pastel blue with VSE



socket, 5 pole, pastel blue, coding: 2 (DALI), wall thickness min.: 0.5 mm, wall thickness max.: 1.2 mm, voltage rating: 250 V, current rating: 20 A, cross-section rating: 2.5 mm<sup>2</sup>

#### Order Info

<b>reference number (ref. no.)</b>	1698P5V
<b>Applications</b>	Lighting, Installation, Electrical Appliances
<b>PU</b>	100
<b>EAN</b>	4028012111626

#### Type

<b>type</b>	socket
<b>number of poles</b>	5 pole
<b>clamping units per pole</b>	2
<b>colour</b>	pastel blue
<b>coding</b>	2 (DALI)
<b>cross-section rating</b>	2.5 mm <sup>2</sup>
<b>PE function</b>	yes
<b>protection against incorrect plugging</b>	yes
<b>latch</b>	yes

#### Technical Data

<b>voltage rating</b>	250 V
<b>current rating</b>	20 A
<b>insulating material</b>	PA 6.6
<b>contact material</b>	brass
<b>core cross-section min.</b>	0.5 mm <sup>2</sup>
<b>core cross-section max.</b>	2.5 mm <sup>2</sup>
<b>impulse voltage rating</b>	4.0 kV
<b>flammability rating</b>	V-2
<b>max. Ambient Temperature Operation</b>	100 °C
<b>IP code</b>	IP20
<b>IP code when plugged</b>	IP40
<b>type of conductor solid</b>	yes
<b>stripping length</b>	8.0-9.0 mm
<b>wall thickness min.</b>	0.5 mm

<b>wall thickness max.</b>	1.2 mm
<b>core cross-section</b>	2.5 mm <sup>2</sup>
<b>Approbation EN61535</b>	AC166-G_Leitungen_EN61535_20121212_20180725_VDE_ENEC_4C
<b>Approbation UL</b>	160_163_AC164_AC166_20011003_20170727_UL_E220480_Sec.1-(
<b>Approbation CSA</b>	AC_160-163-166_166G_20080321_CSA_1997949_Certificate_web.p