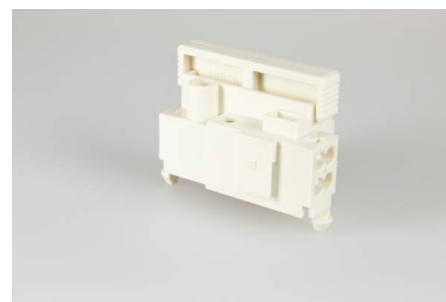




Fused Terminal Blocks

900 SI RZ/ 1

screw-screwless-terminal block, 1 pole, fixing: catch pin, voltage rating: 400 V, current rating: 6.3 A



Order Info

reference number (ref. no.)	175201
Applications	Lighting, Electrical Appliances
PU	100
EAN	4028012108084

Type

type	screw-screwless-terminal block
number of poles	1 pole
clamping units per pole	4
colour	white

Technical Data

voltage rating	400 V
current rating	6.3 A
insulating material	PA 6.6
contact material	brass
flammability rating	V-2
max. Ambient Temperature Operation	70 °C
Assembly Contact Screw	0.8x4.0 / \cup 0.5 Nm
internal core cross-section max.	1.5 mm ²
external core cross-section min.	0.5 mm ²
external core cross-section max.	4.0 mm ²
internal stripping length	7.0-7.5 mm
external stripping length	8.0-8.5 mm
fixing	catch pin
internal core cross-section min.	0.5 mm ²
Type of Conductor Solid External	yes
Type of Conductor Flexible External	yes
Type of Conductor Solid Internal	yes
Type of Conductor Stranded Internal	yes

Accessories

ZEL 110

196420
