

Scriber VS210

The VS210 base unit is a stand-alone plotting system with an integral keyboard and display screen. The marker fixture, plotter pen, and the memory cassette have to be inserted in the base unit to make it operational. The base unit comes in an aluminum carrying case and includes the memory cassette and the power supply. A manual is available in English and Spanish.

The VS 210 can be used to produce labels of all types, with its fixture changeable in a matter of seconds.

The Vario VS 210 makes labeling easy. The menu-driven program guides you quickly and easily through all the steps.

It can be used at any time and in any place. Easily transported in its special case, the battery-operated (battery pack sold separately) VS 210 can be operated precisely where you need it. The spacious case provides enough room for the extensive accessories.

Plotter VP 500

The VP 500 base unit is an auxiliary plotter and has to be connected to a PC via a parallel port or USB connection. It is a high speed plotting device and enables plotting of different markers in one setting. The marker fixture and the plotter pen have to be inserted before commencing the plotting operation. The base unit is primarily controlled through a PC with the help of Vario Sign software (sold separately). Manual available in English and Spanish.

The special design of the VP 500 enables it to hold different markers from various manufacturers at the same time. It is also possible to write on relatively large markers with a maximum height 14 mm.

Fixtures

Fixtures are required for alignment of markers with respect to the plotter pen. Different marker fixtures can be mounted on the plotter bed of the VP 500 at the same time thereby reducing set up times. Fixtures for different markers from various manufacturers like Altech, Allen Bradley, Connectwell, ContaClip, Entelec, Weidmuller, Phoenix Contact, PTR, Wieland, Wago, Murrplastik, Partex, SES Sterling, etc. are available. For more information on ordering fixtures please contact Altech.

SCRIBER VS 210



- Identifiers for connectors, wires, cables and equipment
- Cable ties, shrink tubing, labels and signs of different sizes and materials, as well as customer-specific items.
- Size: 14.9"x7.5"x1.77"
- Weight: 6.6 lbs.

Ordering Information

BASE UNIT (includes power supply, memory cassette and carrying case)	3400003
STARTER KIT (includes cleaning unit, pen cleaners, felt pen, 0.25 mm plotter pen) and ink cartridges	3400001
FIXTURES (see page 115 or contact Altech for available manufactures)	3490xxxx
MEMORY CASSETTE	3550001
BATTERY PACK	3550000



Fixtures & Memory Cassette

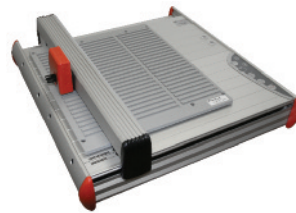


Battery Pack



Plotter Pen, Ink Cartridge

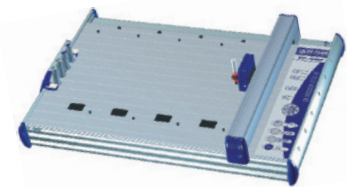
CMPS BASIC PLOTTER PACKAGE



Comes with everything needed to begin printing MT5,6,8,10,12 and 15 tags.

- CMPS plotter
- Size: 17"x18"x4.9"
- CMPS software with cable
- 1 triple fixture for MT5, 6, 8, 10, 12 & 15
- 2 disposable pens

PLOTTER VP 500

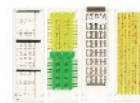


For marking:

- Identifiers for connectors, wires, cables and equipment
- Cable ties, shrink tubing, labels and signs of different sizes and materials, as well as customer-specific items.
- Size: 26"x18"x4.9"

Ordering Information

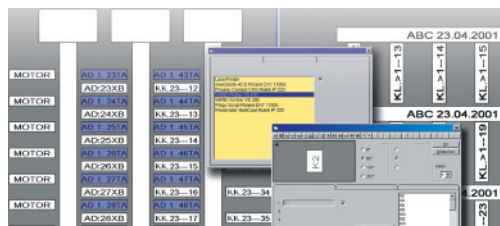
CMPS BASIC PLOTTER PACKAGE	34130020
VARIO SIGN SOFTWARE (discounted price with plotter purchase)	34000022
VP 500 BASE UNIT (includes cable)	34000030
STARTER KIT (includes cleaning unit, pen cleaners, felt pen, 0.25 mm plotter pen) and ink cartridges	3400001
VARIO SIGN SOFTWARE (sold independent of a plotter purchase)	34000020
SERVICE KIT (includes 4 seal bonnets and 10 priming print cards)	34000026
FIXTURES (see page 115 or contact Altech for available manufactures)	3490xxxx



Fixtures



Plotter Pen, Ink Cartridge



Vario Sign Software