

## Flat Head Sealing

**Material:**

- EPDM, black

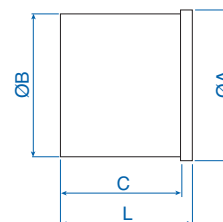
**Features:**

- For sealing cable gland entries when cables are not being installed.
- Insert into cable gland and tighten gland to seal.



Suitable for	ØA mm	ØB mm	C mm	L mm	Cat. No.	Std. Pk.
PG 9, PG 11, M 16, NPT 3/8	11.0	8.0	17.0	20.0	<b>7217701</b>	100
PG 13.5, PG 16, M 20, NPT 1/2	15.0	12.0	18.0	21.0	<b>7217702</b>	100
PG 21, M 25, NPT 3/4	18.0	15.0	19.0	22.0	<b>7217703</b>	100

Temperature Range
-40 to 130°C (-40 to 266°F)



## Multi-Conductor Sealing

**Material:**

- Neoprene, black

**Features:**

- Standard Straight-Through Polyamide Series
- Delivered separate, replaces sealing sleeve provided with gland

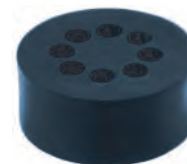
Suitable for	Hole Quantity	Hole Ø mm	ØA mm	B mm	Cat. No.	Std. Pk.
--------------	---------------	-----------	-------	------	----------	----------

**Multi-Conductor Seal**

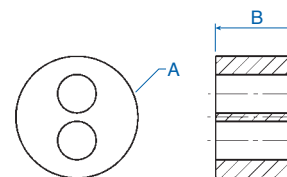
PG 11/ M 16	2	4.0	13.0	8.0	<b>8114200</b>	100
PG 16/ M 20	2	5.0	17.0	10.0	<b>8114203</b>	100
PG 16/ M 20	2	6.0	17.0	10.0	<b>8114201</b>	100
PG 16/ M 20	4	5.0	17.0	10.0	<b>8114202</b>	100
PG 21/ M 25	2	6.0	22.5	11.5	<b>8114204</b>	100
PG 21/ M 25	2	8.0	22.5	11.5	<b>8114208</b>	100
PG 21/ M 25	3	7.0	22.5	11.5	<b>8114205</b>	100
PG 21/ M 25	4	6.5	22.5	11.5	<b>8114206</b>	100
PG 21/ M 25	6	4.0	22.5	11.5	<b>8114207</b>	100
PG 29/ M 32	4	6.0	30.5	13.0	<b>8114212</b>	100
PG 29/ M 32	4	8.0	30.5	13.0	<b>8114209</b>	100
PG 29/ M 32	6	6.0	30.5	13.0	<b>8114210</b>	100
PG 29/ M 32	8	4.0	30.5	13.0	<b>8114211</b>	100

**Solid Sealing without holes**

PG 11/ M 16	—	—	13.0	8.0	<b>8114250</b>	100
PG 16/ M 20	—	—	17.0	10.0	<b>8114251</b>	100
PG 21/ M 25	—	—	22.5	11.5	<b>8114252</b>	100
PG 29/ M 32	—	—	30.5	13.0	<b>8114253</b>	100



Temperature Range
-25 to 100°C (-13 to 212°F)



**This is one of our most popular series and is usually kept in stock.**