

INTERFACES

**Relay Modules and Carriers
Busse Channels
35 or 32mm DIN Rail**

Altech Busse Relay Modules provide high density packaging of miniature general purpose relays with minimal hook-up wiring. Select from busse DC Positive (DC Negative switching), busse DC Negative (DC Positive switching), or busse AC neutral.

Ideal for traditional mechanical relay input/output array between a single logic system and peripheral devices, or between logic systems in a network as well as their peripheral and field devices.

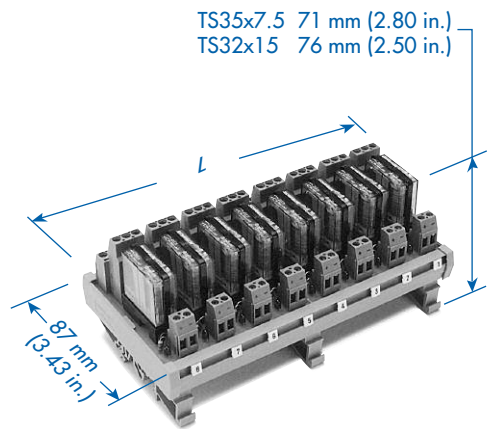
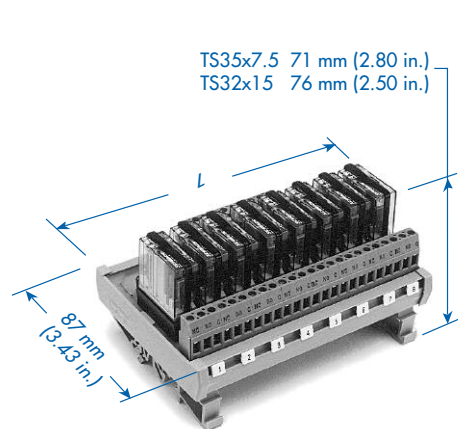
Load your own relays in our RCB Relay Carrier, or order the RMB Relay Module complete with 8 or 16 relays.

Call us with your custom module requirements!

- Screw-Cage Clamp Connections
- LED Coil Voltage Indicator
- Reverse DC Polarity LED Protection
- Surge Suppression With DC Coil
- DIN Rail Mount, Panel Mount Available

**RC1 / RM1
Single Pole Double Throw**

**RC2 / RM2
Double Pole Double Throw**



Wire Range	Contact Ratings	
	Current	Voltage
0.5-4mm ²		250VAC/
30-14 AWG	10A	30VDC

Wire Range	Contact Ratings	
	Current	Voltage
0.5-4mm ²		250VAC/
30-14 AWG	2 x 6A	30VDC

Ordering Information	Module Length (L) mm (in.)	Carrier Only		Module with Relays		Carrier Only		Module with Relays	
		Type	Cat. No.	Type	Cat. No.	Type	Cat. No.	Type	Cat. No.
8 Channel, Busse DC+ 12V DC(E) 24V DC(G)	125 (4.92)	RCB1E8V	8912.5	RMB1E8V	8912.2	RCB2E8V	8923.5	RMB2E8V	8923.2
		RCB1G8V	5494.5	RMB1G8V	5494.2	RCB2G8V	8924.5	RMB2G8V	8924.2
8 Channel, Busse DC-	125 (4.92)	RCB1E8G	8912.6	RMB1E8G	8912.3	RCB2E8G	8923.6	RMB2E8G	8923.3
		RCB1G8G	5492.5	RMB1G8G	5492.2	RCB2G8G	8924.6	RMB2G8G	8924.4
8 Channel, Busse AC (N)	125 (4.92)	RCB1U8	5502.5	RMB1U8	5502.2	RCB2U8	8925.5	RMB2U8	8925.2
		RCB1X8	8913.6	RMB1X8	8913.3	RCB2X8	8925.6	RMB2X8	8925.3
16 Channel, Busse DC+ 12V DC(E) 24VDC(G)	248 (9.76)	RCB1E16V	8914.5	RMB1E16V	8914.2	RCB2E16V	8926.5	RMB2E16V	8926.2
		RCB1G16V	5508.5	RMB1G16V	5508.2	RCB2G16V	8926.6	RMB2G16V	8926.3
16 Channel, Busse DC-	248 (9.76)	RCB1E16G	8921.5	RMB1E16G	8921.2	RCB2E16G	8927.5	RMB2E16G	8927.2
		RCB1G16G	5506.5	RMB1G16G	5506.2	RCB2G16G	8927.6	RMB2G16G	8927.3
16 Channel, Busse AC (N)	248 (9.76)	RCB1U16	5514.5	RMB1U16	5514.2	RCB2U16	8928.5	RMB2U16	8928.2
		RCB1X16	5514.6	RMB1X16	5514.3	RCB2X16	8928.6	RMB2X16	8928.3

Std. Pk.: 1

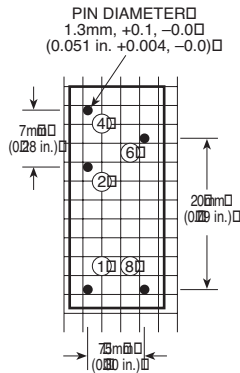
Std. Pk.: 1

Std. Pk.: 1

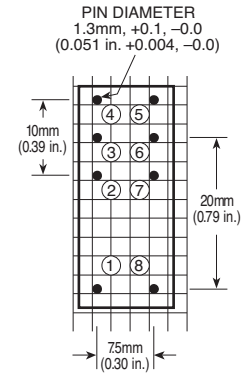
Std. Pk.: 1

Single Pole Double Throw (SPDT)

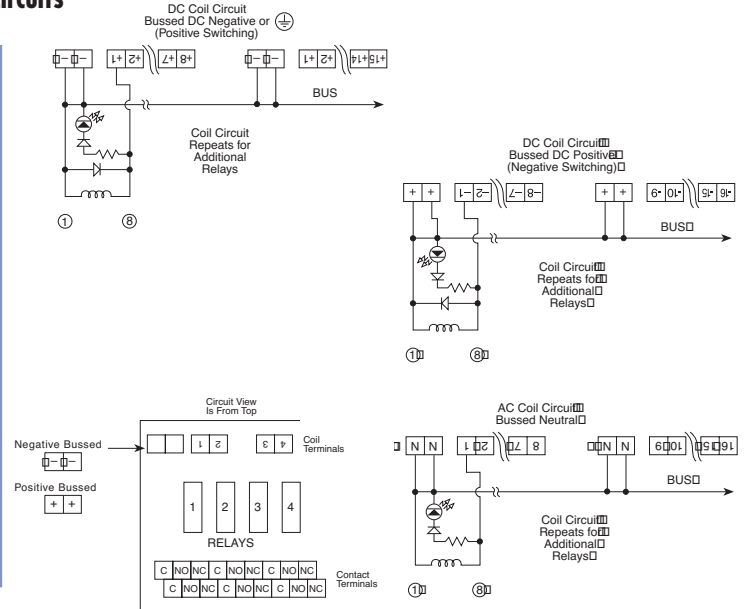
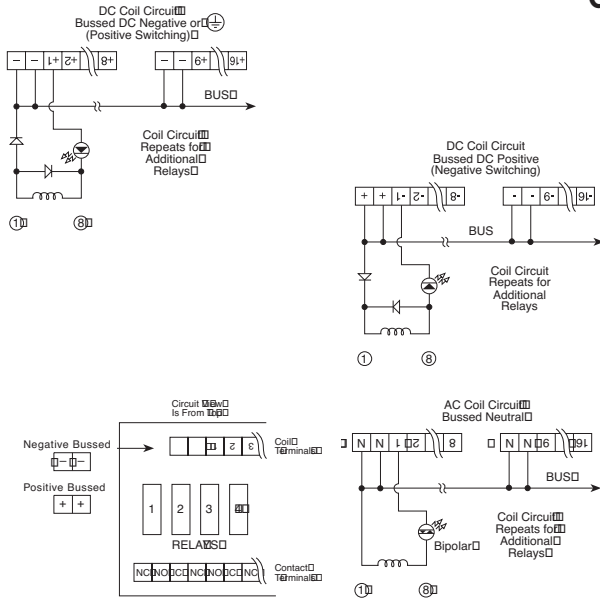
Relay Pinout Bottom View



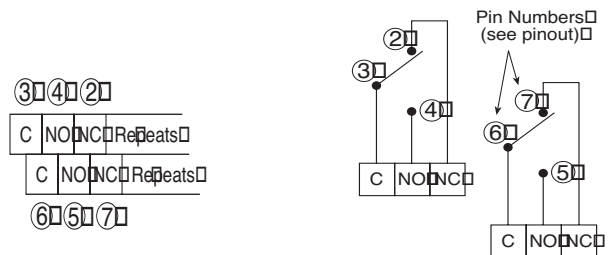
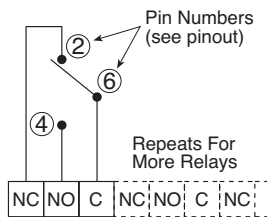
Double Pole Double Throw (DPDT)



Coil Circuits



Contact Circuits



Contact Specifications

SPDT Composite Rating:

-Relay Socket:	10A
-Terminal Blocks:	15A
-PCB Trace for Contact Circuit	
At 30°C (86°F) temperature rise:	12A*
-PCB Trace for Coil Circuit	
At 30°C (86°F) temperature rise:	4A
-PCB Trace for Bus	
At 30°C (86°F) temperature rise:	16A
-Relay Contacts, AgCdO, Minimum Ratings	
Resistive - At 250VAC and 30VDC:	10A
Inductive - At 250VAC:	7.5A
At 30VDC:	5A
(p.f. = 0.4)	
-Minimum Breaking Capacity:	

Contact Specifications

DPDT Composite Rating:

-Relay Socket:	10A
-Terminal Blocks:	15A
-PCB Trace for Contact Circuit	
At 30°C (86°F) temperature rise:	8A
-PCB Trace for Bus	
At 30°C (86°F) temperature rise:	16A
-PCB Trace for Coil Circuit:	
At 30°C (86°F) temperature rise:	2A
-Relay Contacts, AgCdO, Minimum Ratings	
Resistive - At 250VAC and 30VDC:	8A
Rated at 250VAC	
Max. Breaking Voltage:	440VAC
"Make" Current:	12A
-Rated Minimum Breaking Capacity:	
2,000 VA Resistive	

Coil Specifications

Ambient Temperatures:
-40° to +70°C (-40° to +158°F)

Coil Voltage VDC	Operate (pull-in) Max. VDC	Drop Out (Rel.) V Min. VDC	Coil Current mA	Coil Resistance ohms
12	18	8.8	55	220±15%
24	42	17.5	20	1,200±15%
110	132	96.0	8.9	9,000±15%
220	264	192.0	4.1	31,500±15%

Table values are for cold coil at 20°C (68°F) and exclude coil exterior circuit.

* 12A overall rating, with 12A contact relays soldered directly to printed circuit board (no socket) are available. Please consult Altech.