

# Distribution Block

Altech CDB Compact Distribution Blocks are an ideal choice for a simplified distribution system. A lug/bolt secures the incoming cable and the screw clamp design of the block provides the outgoing connections. These provide easy connect points and ensure perfect continuity for distribution. A protective shield effectively shrouds the incoming connection.

### Application Information:

Sum of outgoing currents on either side of center should not exceed half the maximum permissible incoming current.

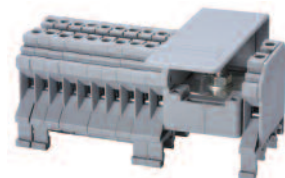
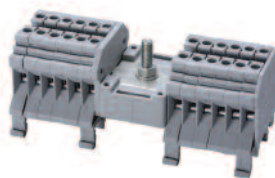
Sum of total outgoing currents should not exceed maximum permissible incoming current.

Connection for higher outgoing currents should be done through the terminal nearest to the incoming connection.



## CDB4/x

## CDB4/x(1)



Terminal Width		6 mm			6 mm		
Height & Width		45 x 43 mm			45 x 43 mm		
Stripping Length		9 mm			9 mm		
Insulation Material		Polyamide 6.6			Polyamide 6.6		
Type of Connection	Input Output	1 Lug/ M5 bolt connection for ring lug Screw clamp connection			1 Lug M5 /bolt connection for ring lug Screw clamp connection		
Approvals							
Wire Range	Input Output	10-8 AWG 22-12 AWG	6-16 sq.mm 0.5-4 sq.mm	10-8 AWG 22-10 AWG	10-8 AWG 22-12 AWG	6-16 sq.mm 0.5-4 sq.mm	10-8 AWG 22-10 AWG
Voltage Rating		600 V	800 V	600 V	600 V	800 V	600 V
Current Rating	Input Max. Individual Output	50 A 25 A	32 A	50 A 35 A	50 A 25 A	32 A	50 A 35 A
Torque	Input Output	26 lb-in 7 lb-in	2.0 Nm 0.5 Nm	26 lb-in 7 lb-in	26 lb-in 7 lb-in	2.0 Nm 0.5 Nm	26 lb-in 7 lb-in

Other Approvals



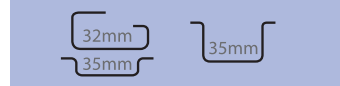
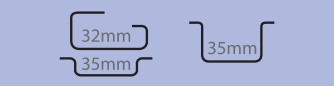
### Terminal Block

Cat. No.	H x W x L (mm)	Outputs	Std. Pk.	Cat. No.	H x W x L (mm)	Outputs	Std. Pk.
CDB4/1	45 x 43 x 43.8	4	10	CDB4/2(1)	45 x 43 x 52	4	10
CDB4/2	45 x 43 x 55.8	8	10	CDB4/3(1)	45 x 43 x 58	6	10
CDB4/3	45 x 43 x 67.8	12	10	CDB4/4(1)	45 x 43 x 64	8	5
CDB4/4	45 x 43 x 80	16	5	CDB4/5(1)	45 x 43 x 70	10	5
CDB4/5	45 x 43 x 96	20	5	CDB4/6(1)	45 x 43 x 76	12	5
				CDB4/10(1)	45 x 43 x 100	20	5
				CDB4/11(1)	45 x 43 x 106	22	5

Cat. No. Std. Pk.

Cat. No. Std. Pk.

DIN Rail for ordering information refer to page 70



End Stop for ordering information refer to page 72



CA702	50
CA802	50

CA702	50
CA802	50

Marking Tags (MTType)



MT6	100
-----	-----

MT6	100
-----	-----

Warning Label

**COLOR BLOCKS**  
(other than grey standard)

**When ordering please add color suffix to Cat. No.**

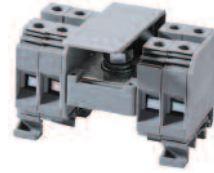
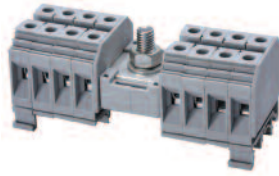
**Example: CTS2.5U-N/R**

<b>Color</b>	<b>Ordering Suffix</b>	
Red	R	
Blue	BU	
Black	BL	
Orange	O	
Green	G	
Yellow	Y	
White	W	
Beige	BG	
Dark Brown	DB	

**CDB6/x**

**CDB10/x**

**CDB25/x**



8 mm

10 mm

12 mm

43 x 47 mm

43 x 47 mm

56 x 49 mm

12 mm

12 mm

18 mm

Polyamide 6.6

Polyamide 6.6

Polyamide 6.6

1 Lug/ M6 bolt connection for ring lug  
Screw clamp connection

1 Lug/ M8 bolt connection for ring lug  
Screw clamp connection

1 Lug/ M8 bolt connection for ring lug  
Screw clamp connection

10-2 AWG 22-8 AWG	6-25 sq.mm 1.5-6 sq.mm	10-2 AWG 22-8 AWG	600 V	8-1/0 AWG 22-6 AWG	10-35 sq.mm 1.5-10 sq.mm	8-1/0 AWG 22-6 AWG	600 V	6-2/0 AWG 12-2 AWG	10-50 sq.mm 6-25 sq.mm	6-2/0 AWG 12-2 AWG	600 V
600 V	800 V	600 V	600 V	600 V	800 V	600 V	600 V	600 V	800 V	600 V	600 V
100 A 50 A	41 A	100 A 50 A	100 A 50 A	125 A 65 A	57 A	130 A 65 A	150 A 75 A	150 A 75 A	101 A	150 A 75 A	150 A 75 A
25 lb-in 9 lb-in	3.0 Nm 0.8 Nm	35 lb-in 14 lb-in	53 lb-in 14 lb-in	53 lb-in 14 lb-in	6.0 Nm 1.2 Nm	53 lb-in 14 lb-in	53 lb-in 14 lb-in	53 lb-in 14 lb-in	6.0 Nm 2 Nm	53 lb-in 14 lb-in	53 lb-in 14 lb-in



Cat. No.	H x W x L (mm)	Outputs	Std. Pk	Cat. No.	H x W x L (mm)	Outputs	Std. Pk	Cat. No.	H x W x L (mm)	Outputs	Std. Pk
<b>CDB6/2</b>	43 x 47 x 64	8	10	<b>CDB10/2</b>	43 x 47 x 72	8	10	<b>CDB25/2</b>	56 x 49 x 88	8	10
<b>CDB6/3</b>	43 x 47 x 80	12	10	<b>CDB10/3</b>	43 x 47 x 92	12	10	<b>CDB25/3</b>	56 x 49 x 112	12	10
<b>CDB6/4</b>	43 x 47 x 96	16	5	<b>CDB10/4</b>	43 x 47 x 112	16	5	<b>CDB25/4</b>	56 x 49 x 136	16	5

Cat. No.	Std. Pk.	Cat. No.	Std. Pk.	Cat. No.	Std. Pk.
	50		50		50
CA702	50	CA702	50	CA702	50
CA802	50	CA802	50	CA802	50
MT8	100	MT10	100	MT12	100
SWL6	100				

① UL recognition in progress.

# Distribution Block

CMDB blocks are the modified version of CDB terminal blocks without central incoming terminal connections.



	CMDB4/X			CMDB6/X			CMDB10/X		
Terminal Width	6 mm			8 mm			10 mm		
Height & Width	45 x 43 mm			43 x 47 mm			43 x 47 mm		
Stripping Length	9 mm			12 mm			12 mm		
Insulation Material	Polyamide 6.6			Polyamide 6.6			Polyamide 6.6		
Type of Connection	Screw clamp connection			Screw clamp connection			Screw clamp connection		
Approvals	UL <sup>①</sup>			UL <sup>①</sup>			UL <sup>①</sup>		
Wire Range	Input 22-10 AWG	Output 0.5-4 sq.mm	22-10 AWG	Input 22-8 AWG	Output 1.5-6 sq.mm	22-8 AWG	Input 22-6 AWG	Output 1.5-10 sq.mm	20-6 AWG
Voltage Rating	600 V	800 V	600 V	600 V	800 V	600 V	600 V	800 V	600 V
Current Rating	Input 30 A	Output 32 A	30 A	Input 50 A	Output 41 A	50 A	Input 65 A	Output 57 A	65 A
Torque	Input 7 lb-in	Output 0.5 Nm	7 lb-in	Input 9 lb-in	Output 0.8 Nm	14 lb-in	Input 14 lb-in	Output 1.2 Nm	14 lb-in

Other Approvals

	UL <sup>①</sup>			UL <sup>①</sup>			UL <sup>①</sup>		
	RoHS			RoHS			RoHS		
	Cat. No.	H x W x L (mm)	Outputs Std. Pk.	Cat. No.	H x W x L (mm)	Outputs Std. Pk.	Cat. No.	H x W x L (mm)	Outputs Std. Pk.

## Terminal Block

<b>CMDB4/2</b>	45 x 43 x 13.5	4	10	<b>CMDB6/2</b>	43 x 48 x 17.5	4	10	<b>CMDB10/2</b>	43 x 48 x 21.5	4	10
<b>CMDB4/3</b>	45 x 43 x 19.5	6	10	<b>CMDB6/3</b>	43 x 48 x 25.5	6	10	<b>CMDB10/3</b>	43 x 48 x 31.5	6	10
<b>CMDB4/4</b>	45 x 43 x 25.5	8	5	<b>CMDB6/4</b>	43 x 48 x 33.5	8	10	<b>CMDB10/4</b>	43 x 48 x 41.5	8	10
<b>CMDB4/10</b>	45 x 43 x 61.5	20	5	<b>CMDB6/10</b>	43 x 48 x 81.5	20	5	<b>CMDB10/10</b>	43 x 48 x 101.5	20	5

	Cat. No.	Std. Pk.	Cat. No.	Std. Pk.	Cat. No.	Std. Pk.
DIN Rail for ordering information refer to page 70						

End Stop for ordering information refer to page 72

	CA702	50	CA702	50	CA702	50
	CA802	50	CA802	50	CA802	50

Marking Tags (MT Type)

	MT6	100	MT8	100	MT10	100
--	-----	-----	-----	-----	------	-----

Warning Label

			SWL6	100		
--	--	--	------	-----	--	--

**COLOR BLOCKS**  
(other than grey standard)

When ordering please add color suffix to Cat. No.

*Example: CTS2.5U-N/R*

Color	Ordering Suffix	
Red	R	
Blue	BU	
Black	BL	
Orange	O	
Green	G	
Yellow	Y	
White	W	
Beige	BG	
Dark Brown	DB	

① UL recognition in progress.