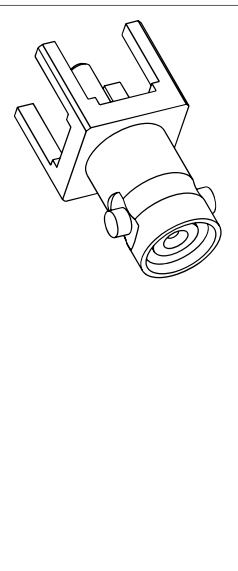
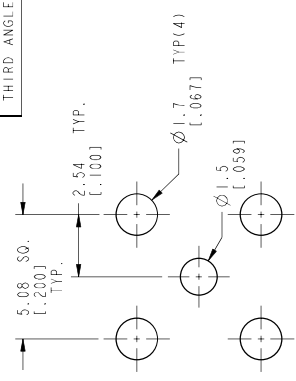


THIRD ANGLE PROJ.		REVISIONS			
REV	DESCRIPTION	DATE	ECO	APPR	L.O.
A	RELEASE TO MFG.	08-Apr-13	49282		

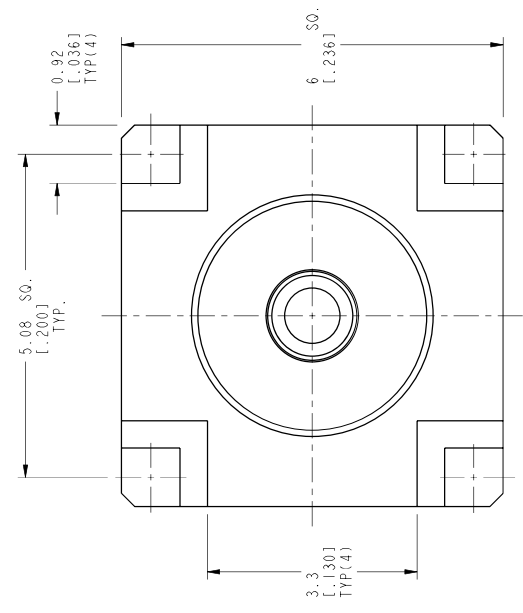
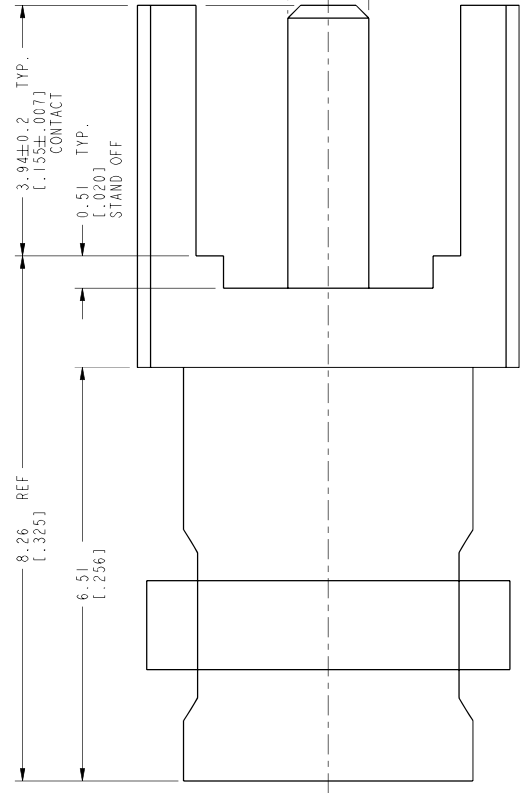


SCALE 4.000



SCALE 5.000

RECOMMENDED MOUNTING HOLE DIMENSIONS



NOTES:

- MATERIALS AND FINISHES:**
BODY - BRASS, NICKEL PLATING.
CONTACT - BeCu, GOLD PLATING.
INSULATOR - PTFE
- ELECTRICAL:**
A. IMPEDANCE: 50 OHMS
B. FREQUENCY RANGE: DC - 6 GHz
C. RETURN LOSS: 30 dB MIN @ 6 GHz
- MECHANICAL:**
A. DURABILITY: 500 CYCLES MIN.
B. TEMPERATURE RANGE: -65°C TO +165°C
- ENVIRONMENTAL:**
A. THERMAL SHOCK PER MIL-STD-202 METHOD 107
B. TEST CONDITION B (EXCEPT HIGH TEMP @200°C)
C. VIBRATION: MIL-STD-202 METHOD 204 TEST CONDITION B
D. SHOCK: MIL-STD-202 METHOD 213 TEST CONDITION B
E. CORROSION: MIL-STD-202 METHOD 101 TEST CONDITION B 5% SALT SOLUTION
- PACKAGING:**
A. QUANTITY: SINGLE PACK
B. MARKING: BAG TO BE MARKED:
"AMPHENOL RF, 34-5022, AND DATE CODE"

CUSTOMER OUTLINE DRAWING
ALL OTHER SHEETS ARE FOR INTERNAL USE ONLY

TITLE		DRAWN		DATE	
50 OHM HD BNC STR JACK		L.OIN	08-Apr-13		
PCB THROUGH HOLE		ENGINEER	DATE		
4 LEGS RECEPTACLE		KARTHIK R	11-Jul-12		
SCALE: 13.0:1.0 SHEET 2 OF 2		APPROVED	DATE		
DWG SIZE		H.HE	09-Apr-13		
REV		CAD FILE			
A					
B					
A					

UNLESS OTHERWISE SPECIFIED, DIMENSIONS ARE IN METRIC AND TOLERANCES ARE:
 <0.5mm ±0.1mm
 0.5 - 6mm ±0.2mm
 6 - 30mm ±0.3mm
 30 - 120mm ±0.5mm
 ANGLES ±1°

NOTICE - These drawings, specifications, or other data (1) are, and remain the property of Amphenol Corp. (2) must be returned upon request; and (3) are confidential and not to be disclosed to any person other than those to whom they are intended. Amphenol Corp., or to any other person for any purpose is not to be regarded by implication or otherwise in any manner licensing, granting rights to permitting such holder or any other person to manufacture, use or sell any product, process or design, patented or otherwise, that may in any way be related to or disclosed by said drawings, specifications, or other data.

Amphenol RF
www.amphenolrf.com
DRAWING NO. 34-5022
ITEM NO. 34-5022
PART NO. 34-5022