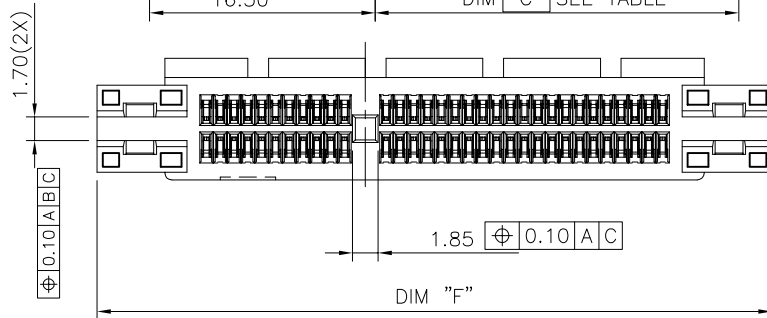
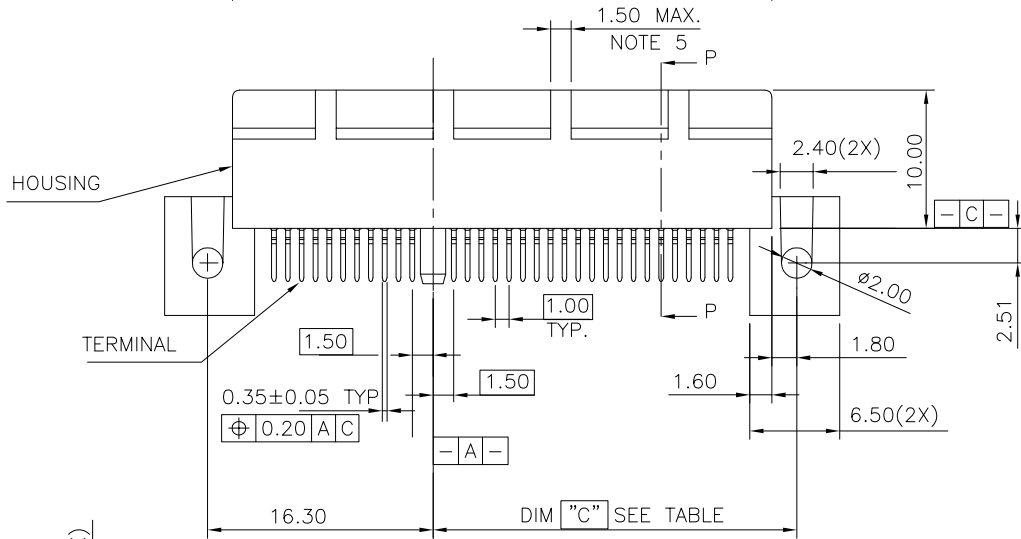
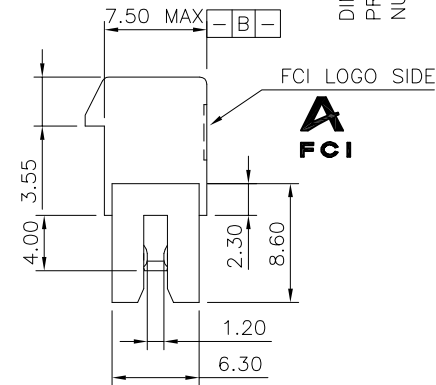
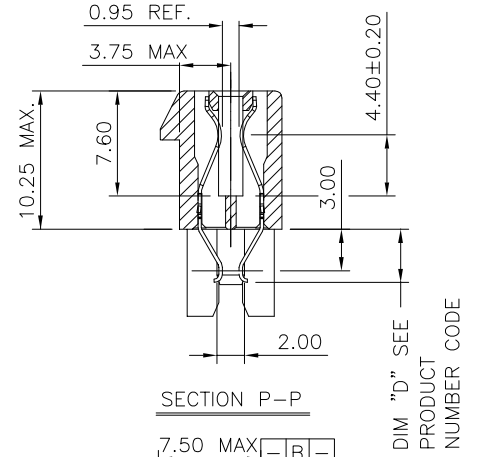
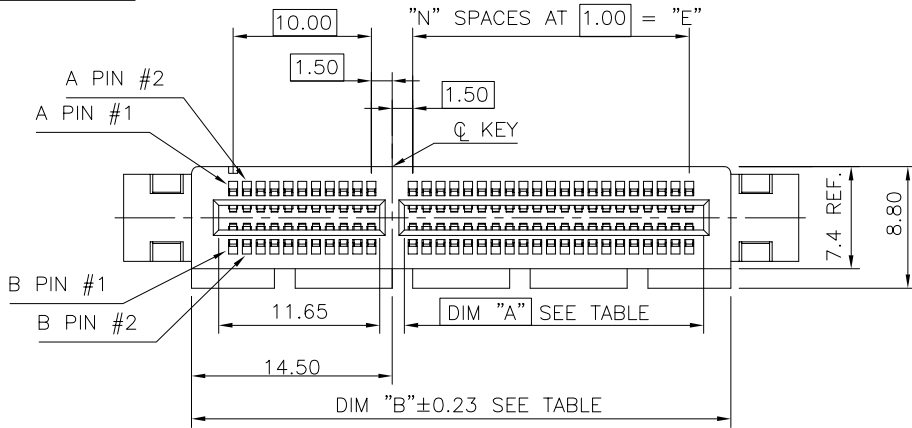
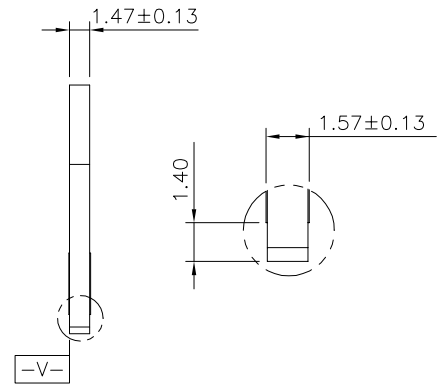
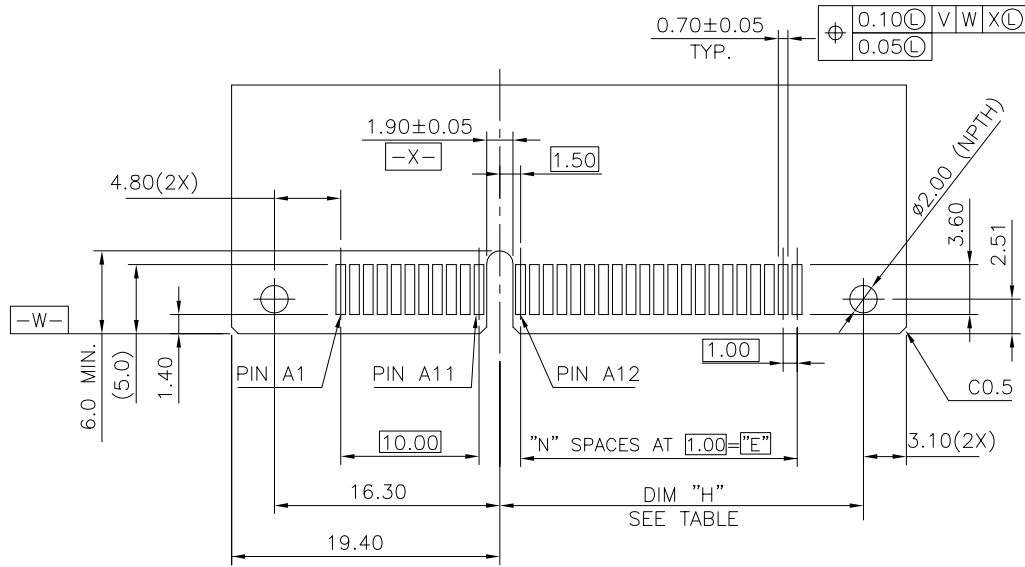


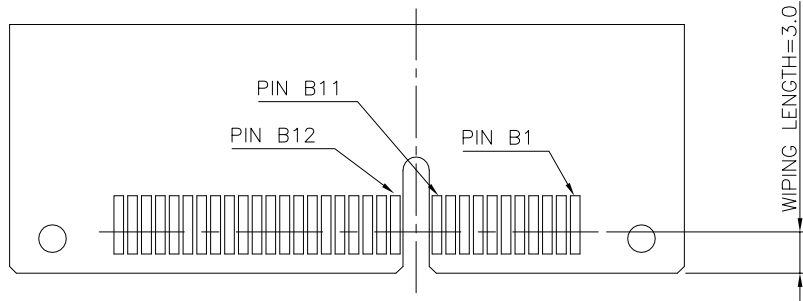
PRODUCT NO.
10025026



mat'l. code	surface	tolerance	projection	product family
-	-	ASME_Y14.5		PCI_EXPRESS
ltr	ecn no	dr	date	title
F	T06-0179	M W	10/24/06	PCI_EXPRESS_CARD_EDGE_GEN3
G	T06-0209	M W	12/08/06	STRADDLE_MOUNT_ASS'Y
H	T10-0068	J H	5/26/10	
J	D6-008880	H T	12/12/11	
K	D6-23732	LZH	04/05/16	
		chr	STONE_LI	
		appd	PM_ZHENG	
sheet index	revision	k		
	sheet	7		



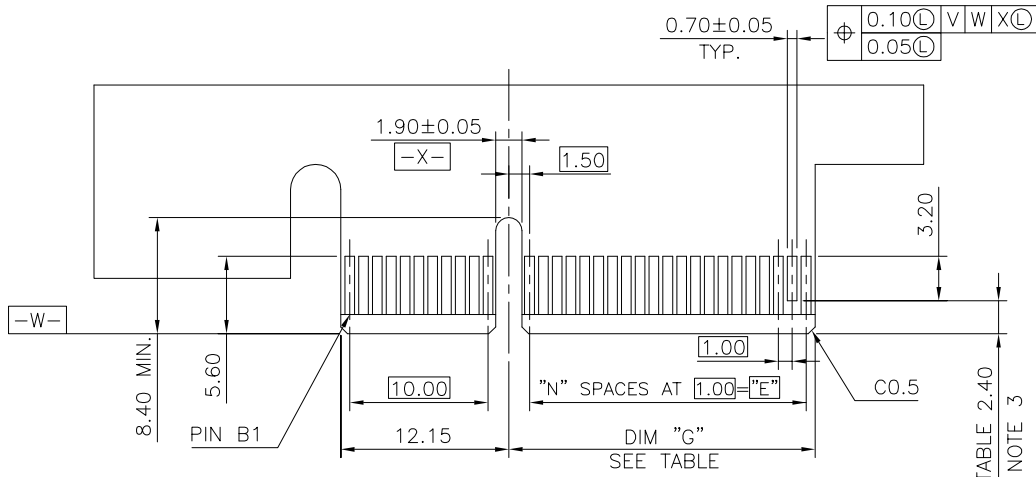
SCALE 2:1



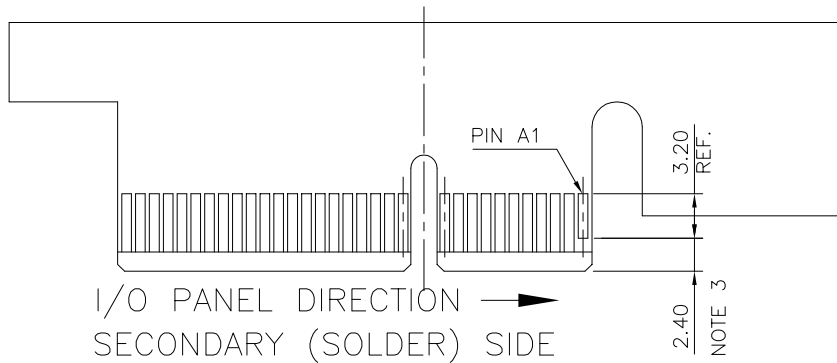
RECOMMEND OF PCB DIMENSIONS

#	POS REF.	N	DIM "H"	DIM "E"
36	6	6	12.30	6.00
64	20	20	26.30	20.00
98	37	37	43.30	37.00
164	70	70	76.30	70.00

mat'l. code		surface		tolerance		projection		product family	
-		-		ASME_Y14.5				PCI_EXPRESS	
ltr		ecn no		dr		date		title	
								PCI_EXPRESS_CARD_EDGE_GEN3 STRADDLE_MOUNT_ASS'Y	
				angles				dwg no	
				±2°		scale N/A		sheet 2 of 7	
		dr		ZHENHUA_LIU		2016-03-25		size	
		engr		ZHENHUA_LIU		2016-03-25		A4	
		chr		STONE_LI		2016-03-25		10025026	
		appd		PM_ZHENG		2016-03-25		type	
sheet		revision		k				CUSTOMER Drawing	
index		sheet		7					

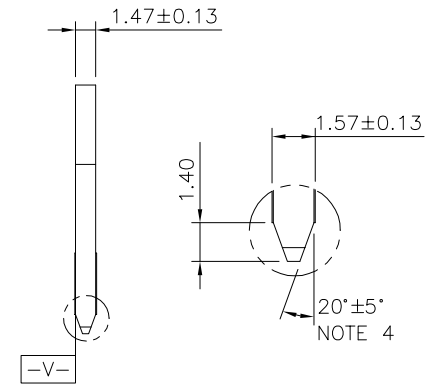


← I/O PANEL DIRECTION
PRIMARY (COMPONENT) SIDE



I/O PANEL DIRECTION →
SECONDARY (SOLDER) SIDE

PIN "F" SEE TABLE 2.40
NOTE 3



SCALE 2:1

ADD-IN CARD EDGE-FINGER DIMENSIONS

#	POS REF.	N	DIM "G"	"F"
36		6	8.15	B17
64		20	22.15	B31
98		37	39.15	B48
164		70	72.15	B81

mat'l. code		surface	tolerance	projection	product family
-		-	ASME_Y14.5	ASME_Y14.5	PCI_EXPRESS
ltr	ecn no	dr	date	tolerances unless otherwise specified	title
				angles	PCI_EXPRESS_CARD_EDGE_GEN3
				±2°	STRADDLE_MOUNT_ASS'Y
				Line/Point	MM
				Line/Point	scale N/A
		dr	ZHENHUA_LIU 2016-03-25		dwg no
		enfr	ZHENHUA_LIU 2016-03-25		sheet 3 of 7
		chr	STONE_LI 2016-03-25		size
		appd	PM_ZHENG 2016-03-25		A4
sheet index	revision	k			type
7	7				CUSTOMER Drawing

A

5

B

NOTES:

- 1.MATERIAL: RATED.
HOUSING: HIGH TEMPERATURE NYLON, GLASS FILLED UL94V-0
TERMINAL: COPPER ALLOY
PLATING: SEE PRODUCT NUMBER CODE
METAL BOARD LOCKS: COPPER ALLOY
FINISH: 100u" TIN OVER 50u" NICKEL UNDERPLATE
- 2.PRODUCT SPECIFICATION: GS-12-233
- ③NO TIE BAR PERMITTED FROM CARD EDGE TO LEADING EDGE OF PAD FOR PINS A1 AND PIN NUMBERS "F".
- ④CHAMFER EDGES MUST BE FREE OF CUTTING BURRS.
- ⑤FREQUENCY & LOCATION AT SUPPLIER DISCRETION. RIDGE MAY BE CONTINUOUS WITH NO BREAKS.
- 6.RoHS COMPATIBLE PRODUCT SPECIFICATIONS
 - a - PLATING:
 - "LF" MEANS THE PRODUCT IS LEAD-FREE
 - b - MANUFACTURING PROCESS COMPATIBILITY
 - THE HOUSING WILL WITHSTAND EXPOSURE TO 260°C±5°C SOLDER BATH TEMPERATURE FOR 5 SECONDS IN A REFLOW SOLDER APPLICATION.

CONNECTOR	# POS REF.	N	DIM "A"	DIM "B"	DIM "C"	"E"	"F"
1 PORT	36	6	7.65	25.00	12.30	6.00	34.8
4 PORT	64	20	21.65	39.00	26.30	20.00	48.8
8 PORT	98	37	38.65	56.00	43.30	37.00	65.8
16 PORT	164	70	71.65	89.00	76.30	70.00	98.8

PRODUCT NUMBER CODE

10025026 -X 0 X 0 X T □ □

HOUSING COLOR OPTIONS

- 0-NATURAL
- 1-BLACK

RESERVE


TERMINAL PLATING OPTIONS

- 0-50u" Ni UNDERPLATE
30u" Au CONTACT AREA
100u" TIN TAIL AREA ----- COMPATIBLE RoHS
- 1-50u" Ni UNDERPLATE
15u" Au CONTACT AREA
100u" TIN TAIL AREA ----- COMPATIBLE RoHS
- 2-50u" Ni UNDERPLATE
GOLD FLASH CONTACT AREA
100u" TIN TAIL AREA ----- COMPATIBLE RoHS
- 3-50u" Ni UNDERPLATE
30u" Au CONTACT AREA
100u" TIN/LEAD TAIL AREA ----- INCOMPLIANT RoHS
- 4-50u" Ni UNDERPLATE
15u" Au CONTACT AREA
100u" TIN/LEAD TAIL AREA ----- INCOMPLIANT RoHS
- 5-50u" Ni UNDERPLATE
GOLD FLASH CONTACT AREA
100u" TIN/LEAD TAIL AREA ----- INCOMPLIANT RoHS

LEAD FREE OPTIEION

"LF" FOR TERMINAL PLATING OPTION 0,1,2

PACKAGING OPTIONS

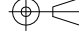
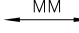
- T: TRAY PACKAGING(IN GENERAL VERTICAL DIRECTION)
- C: TAPE & REEL WITH INSERT CAP (FOR 98P ONLY)
- H: TRAY PACKAGING(IN SPECIAL HORIZONTAL DIRECTION FOR 164P ONLY)
- P: TRAY PACKAGING WITH INSERT CAP 

POS OPTIONS

- 0-36
- 1-64
- 2-98
- 3-164

TAIL LENGTH OPTIONS

DIM "D"	PCB THICKNESS
3.85 +0.25 -0.13	1.56

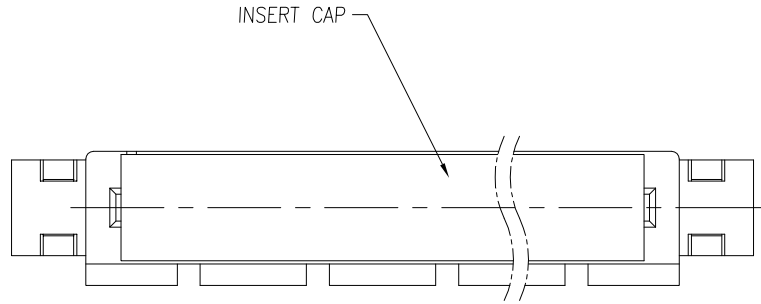
mat'l. code		surface		tolerance		projection		product family	
-		-		ASME_Y14.5				PCI_EXPRESS	
ltr	ecn no	dr	date	tolerances unless otherwise specified				title	
				angles	u			PCI_EXPRESS_CARD_EDGE_GEN3	
				±2°	lined			STRADDLE_MOUNT_ASS'Y	
								dwg no	
				dr	ZHENHUA_LIU	2016-03-25			sheet 4 of 7
				engr	ZHENHUA_LIU	2016-03-25			size
				chr	STONE_LI	2016-03-25			A4
				appd	PM_ZHENG	2016-03-25			type
sheet index	revision	K							
	sheet	7							



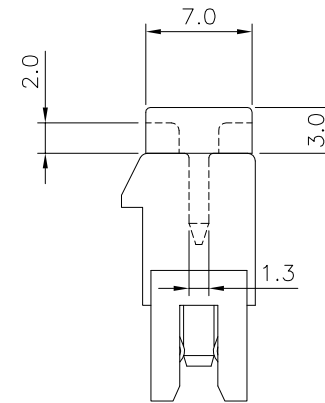
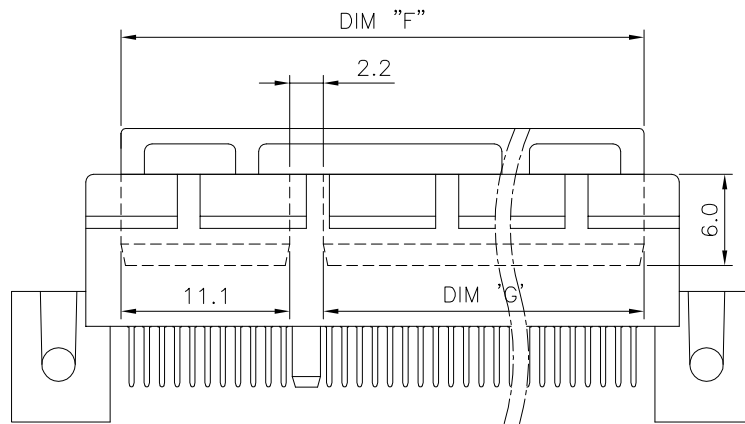


NOTES:

- 1. MATERIAL:
INSERT CAP: THERMOPLASTIC UL94V-0; BLACK COLOR.



DIMENSIONS		
POSITION	F	G
36	20.4	7.1
64	34.4	21.1
98	51.4	38.1
164	84.4	71.1



A

A

B

B

mat'l. code		surface		tolerance		projection		product family	
-		-		ASME_Y14.5				PCI_EXPRESS	
ltr		ecn no		dr		date		title	
								PCI_EXPRESS_CARD_EDGE_GEN3 STRADDLE_MOUNT_ASS'Y	
								dwg no	
								sheet 5 of 7	
								size	
								A4	
								type	
								CUSTOMER Drawing	
sheet index		revision sheet		K					
		7							

5

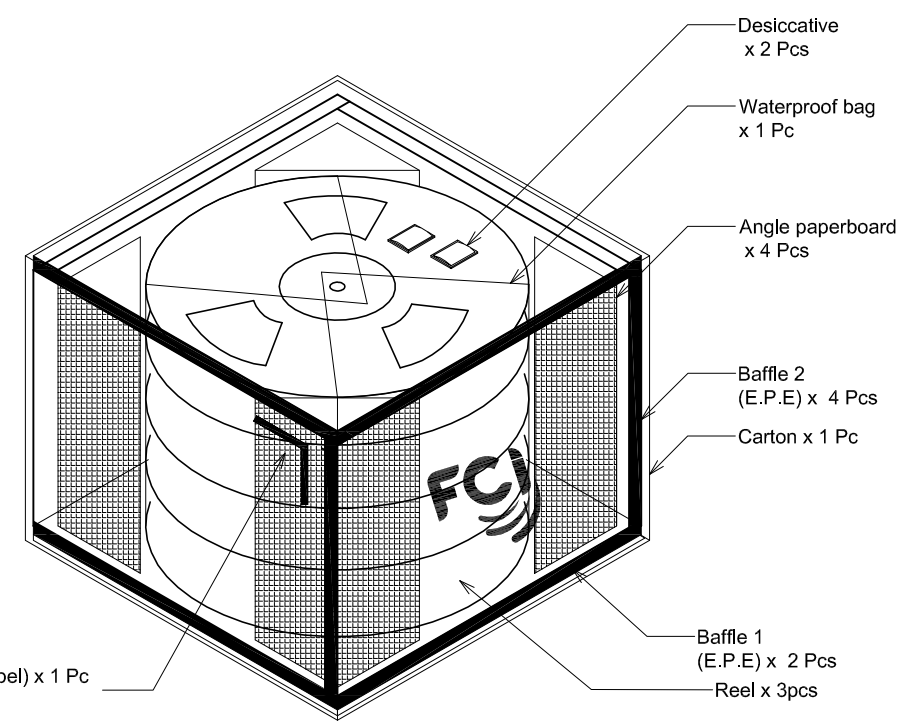
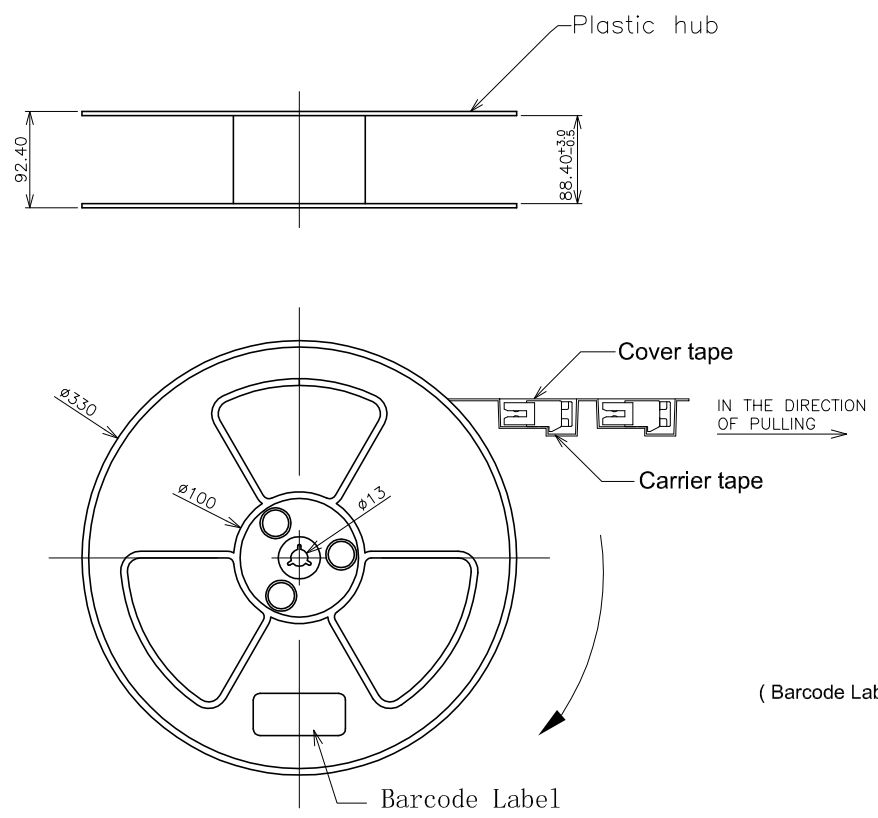
B

NOTE:

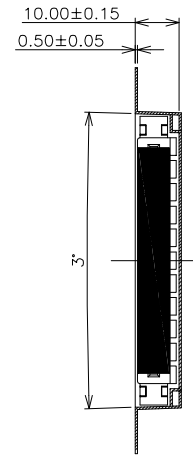
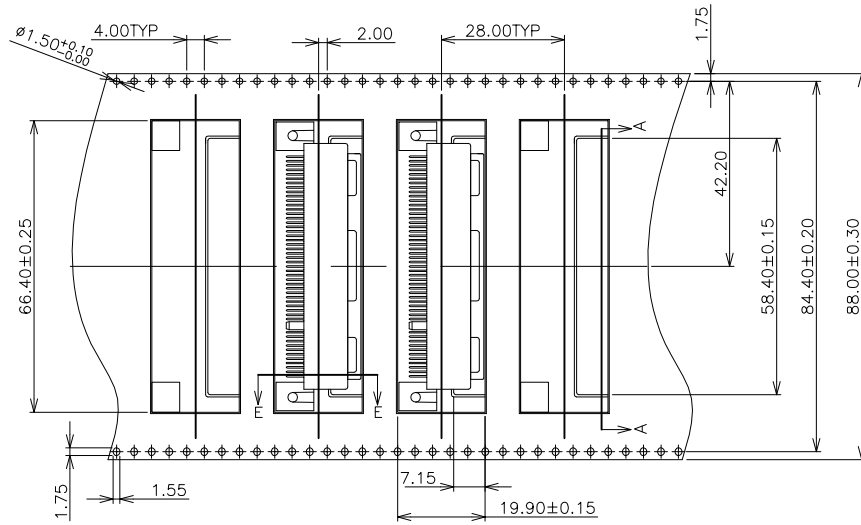
1. REEL MATERIAL : PS, BLACK
2. CARRIER MATERIAL : PS
3. COVER TAPE MATERIAL : PS
4. COVER TAPE REEL STRENGTH : 13"
5. QUANTITY : 150 PCS/REEL
6. Carton : 380(L) * 380(W) * 300(H) mm

Part No	
10025026-XXXXC(LF)	

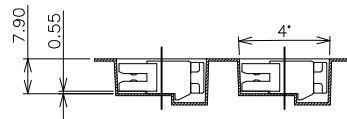
NO. OF CONTACTS	98
REEL/CARTON	3
PCS/REEL	150
QUANTITY(PCS)	450



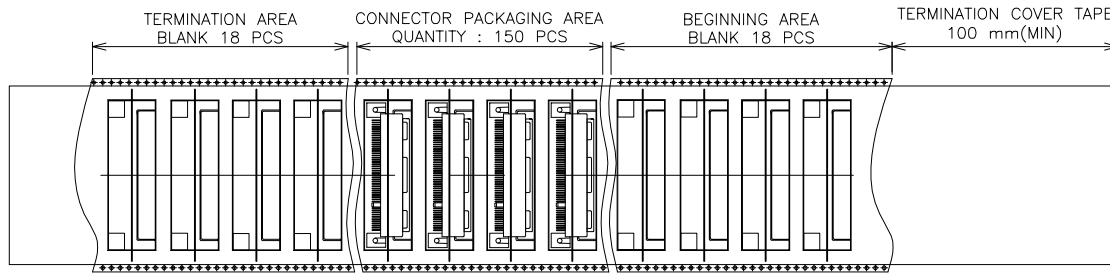
mat'l. code	-	surface	ASME_Y14.5	projection	product family	PCI_EXPRESS
ltr	ecn no	dr	date	tolerances unless otherwise specified	title	PCI_EXPRESS_CARD_EDGE_GEN3 STRADDLE_MOUNT_ASS'Y
				angles	MM	dwg no
				±2°	scale N/A	sheet 6 of 7
		dr	ZHENHUA_LIU	2016-03-25	Amphenol FCI	size
		enr	ZHENHUA_LIU	2016-03-25		A4
		chr	STONE_LI	2016-03-25		10025026
		app	PM_ZHENG	2016-03-25		CUSTOMER Drawing
sheet index	revision	K	7			



SECTION A-A



SECTION E-E



COMPOSITION OF PACKAGING

IN THE DIRECTION OF PULLING

mat'l. code		surface		tolerance		projection		product family	
-		-		ASME_Y14.5				PCI_EXPRESS	
ltr		ecn no		dr		date		title	
								PCI_EXPRESS_CARD_EDGE_GEN3 STRADDLE_MOUNT_ASS'Y	
								dwg no	
								sheet 7 of 7	
								size	
								A4	
								type	
								CUSTOMER Drawing	
sheet index		revision sheet		K		7			