

NOTES:

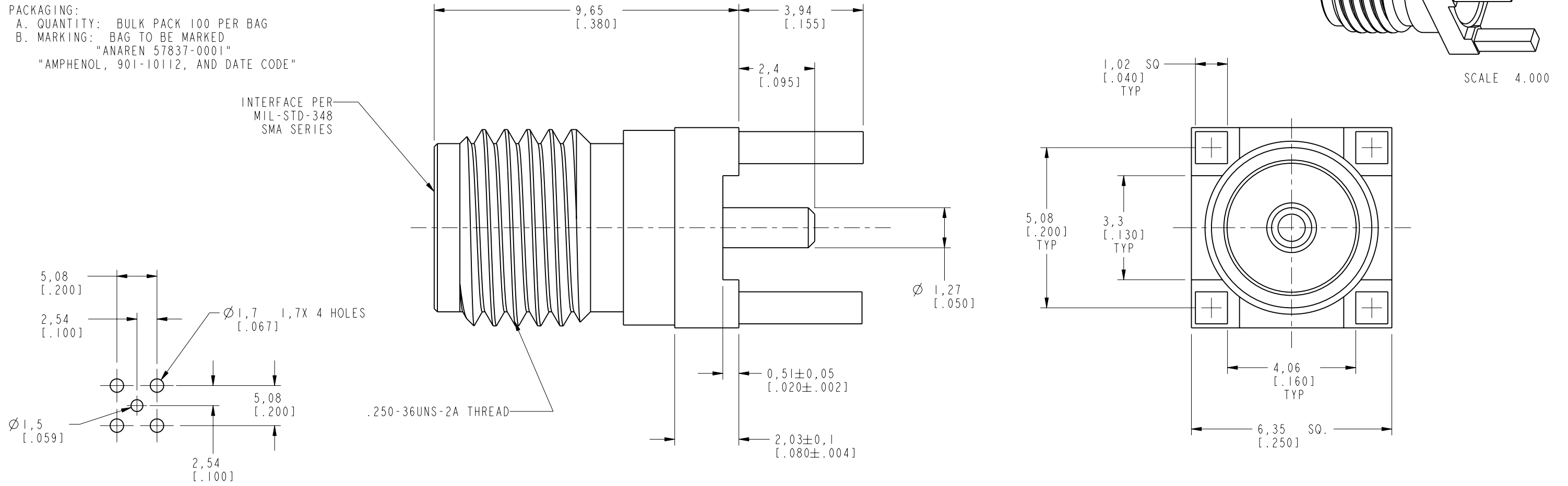
1. MATERIALS AND FINISHES:
 BODY = BRASS PER ASTM-B16, GOLD PLATED PER MIL-G-45204 TYPE I, .000010 MIN THICK,
 OVER COPPER PER MIL-C-14550, CLASS 4, .000130 MIN THICK
 CONTACT PIN = PHOSPHOR BRONZE PER ASTM B139, GOLD PLATED PER MIL-G-45204, .000050 MIN THICK
 OVER NICKEL PLATE PER QQ-N-290 .000050 MIN THICK
 INSULATOR = PTFE PER MIL-P-19468

2. ELECTRICAL:
 A. IMPEDANCE: 50 OHM
 B. FREQUENCY RANGE: DC - 4 GHz
 C. VSWR(RETURN LOSS): 1.05 (32 dB), MAX. @2.2 GHz
 D. DIELECTRIC WITHSTANDING VOLTAGE: 1000 VRMS, MIN.

3. MECHANICAL:
 A. DURABILITY: 200 CYCLES MIN.
 B. TEMPERATURE RANGE: -65° C TO 165° C
 C. FORCE TO ENGAGE/DISENGAGE: TORQUE: 2.0 INCH POUNDS (MAX.)
 D. COUPLING PROOF TORQUE: 15 INCH POUNDS MIN.
 E. COUPLING MECHANISM RETENTION FORCE: 60 LBS. MIN
 F. CENTER CONTACT RETENTION: AXIAL: 6 LBS. MIN, RADIAL: 4 INCH OUNCES MIN.

4. PACKAGING:
 A. QUANTITY: BULK PACK 100 PER BAG
 B. MARKING: BAG TO BE MARKED
 "ANAREN 57837-0001"
 "AMPHENOL, 901-10112, AND DATE CODE"

901-10112		REVISIONS			
DRAWING NO.	REV	DESCRIPTION	DATE	ECO	APPR
THIRD ANGLE PROJ.	A	RELEASE TO MFG.	7/7/03	44545	CPM
	B	1) 3.30 WAS 2.92 2) BODY PLATING WAS 5 MICROINCHES GOLD 3) CENTER CONTACT WAS BERYLLIUM COPPER 4) ADDED CUSTOMER PN TO PACKAGING	9/24/03	44617	
	C	.380 WAS .375 ADD .080, .020 DIMENSIONS; ELECTRICAL, MECHANICAL, PACKAGING INFO; SPECS. TO MATERIAL AND FINISHES NOTES	9/2/05	45698	KJC



RECOMMENDED PCB MOUNTING HOLE
 SCALE 2.000

CUSTOMER OUTLINE DRAWING
 ALL OTHER SHEETS ARE FOR INTERNAL USE ONLY

UNLESS OTHERWISE SPECIFIED, DIMENSIONS ARE IN MM (INCHES) AND TOLERANCES ARE: 0.5 - 6mm ±0.2mm 6 - 30mm ±0.4mm 30 - 120mm ±0.6mm	MATERIAL	DRAWN C. McGRATH	DATE 6/30/03	TITLE SMA PCB MOUNT JACK		Amphenol Amphenol Corporation Communication and Network Products Division Danbury, CT U.S.A. 06810	
	REFERENCE GEN# 901-144-8RFX_ASSY EAR 1038 ANAREN PN: 57837-0001	ENGINEER O. BARTHELME	DATE 6/30/03				
	APPROVED O. BARTHELME	DATE 7/2/03	CODE ID 74868	DWG SIZE B	DRAWING NO. 901-10112	REV C	SCALE: 8.0:1