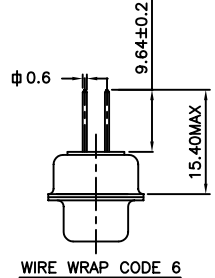
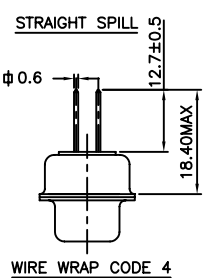
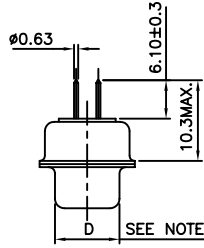
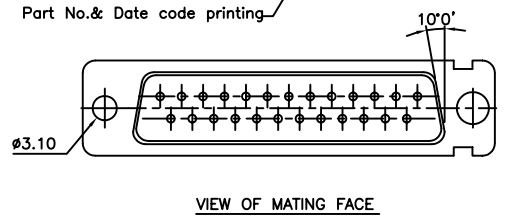
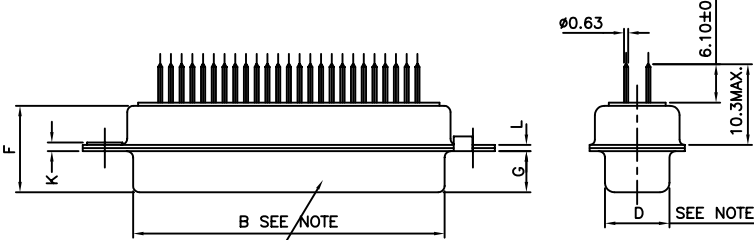
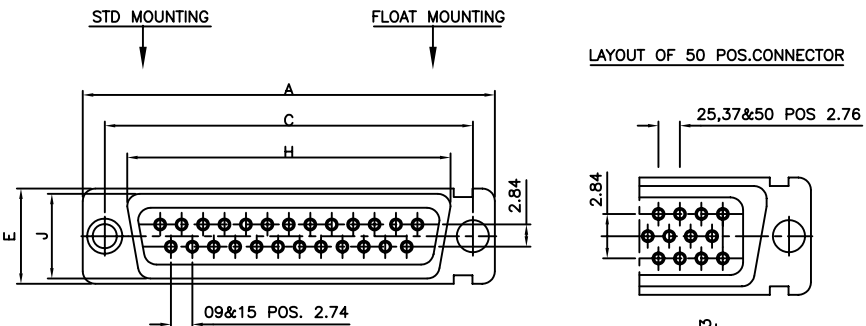




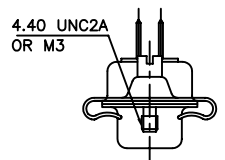
Copyright FCI

FCIconnect.com



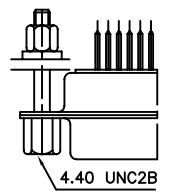
ORDERING INFORMATION

| | | | | | | | | | | | | | | |
|---------------------------------------|---|---|---|---|----|---|---|----|---|---|---|-----|----|---|
| SERIES | D | B | P | V | 25 | P | 3 | 64 | C | T | X | XXX | LF | LEAD FREE |
| SHELL SIZE | | | | | | | | | | | | | | SPECIAL CODES |
| E,A,B,C,D | | | | | | | | | | | | | | DIMPLES- OPTIONAL |
| CHARACTERISATION | | | | | | | | | | | | | | X-ON MALE CONNECTORS ONLY |
| M-DM SERIES | | | | | | | | | | | | | | SHELL PLATING |
| P-DP SERIES | | | | | | | | | | | | | | BLANK-ZINC for DP/CADMIUM FOR DM |
| OPTIONS | | | | | | | | | | | | | | T-STD. TIN over Cu or Zinc Cr 3 |
| BLANK-STANDARD | | | | | | | | | | | | | | OPTIONS |
| F-FLOAT MOUNTING | | | | | | | | | | | | | | BLANK-STANDARD |
| V-FEM. SCREW LOCK HEX. (UNC) | | | | | | | | | | | | | | H-SHIELDING TERMINATION FINGERS |
| W-RIVETED FEM. SCREW LOCK ROUND UNC | | | | | | | | | | | | | | G-HARPOON (UNC4-40) |
| N-THREADED FEM. SCREW LOCK M3 | | | | | | | | | | | | | | M-METAL BRACKET |
| L-CLINCH NUT (M3) | | | | | | | | | | | | | | C-WITHOUT BRACKET |
| O-CLINCH NUT (UNC) | | | | | | | | | | | | | | N-OBLIGATORY FOR DM |
| S-SPACER RIVETTED TO SHELL (S/S ONLY) | | | | | | | | | | | | | | CONTACT PLATING |
| NO. OF CONTACTS | | | | | | | | | | | | | | BLANK - 0.2µ Au |
| 09,15,25,37,50 | | | | | | | | | | | | | | 64 - Au FLASH |
| CONTACTS | | | | | | | | | | | | | | 65 - 0.75µ Au |
| P - PIN | | | | | | | | | | | | | | 67 - 0.4µ Au |
| S - SOCKET | | | | | | | | | | | | | | 32 - 1.27µ Au (APPLICABLE FOR DM SERIES ONLY) |
| TERMINATION TYPE | | | | | | | | | | | | | | |
| 3-STRAIGHT SPILL | | | | | | | | | | | | | | |
| 4-WIRE WRAP TERMINATION 12.70MM | | | | | | | | | | | | | | |
| 6-WIRE WRAP TERMINATION 9.64MM | | | | | | | | | | | | | | |



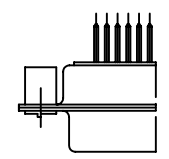
ORD.CODE:-8630-05(E,A,B,C)
 ORD.CODE:-8630-03 D/SHELL FEMALE.
 ORD.CODE:-8630-15 D/SHELL MALE.
 ORD.CODE:-8630-04 E,A,B,C SHELL.
 WITH METAL HOOD.
 FOR 4.40UNC THREAD ADD 'N' TO
 THE CORRESPONDING ORD.CODE.

EXTENDED FEMALE SCREW-LOCK WITH SPACER



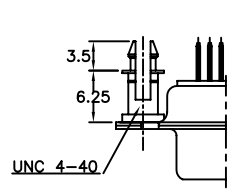
ORD.CODE:-8630-01-062

SPACERS RIVETTED TO SHELL



PREFIX:-S

HARPOON RIVETTED TO SHELL



PREFIX:-G

| | | | | | | | | | | | | | | | | | | | |
|----|------------|-------|-------|-------|-------|---------|---------|------|-------|-------|-------|-----|-------|-----|-------|-----|--------|-----|-------|
| 50 | P | 66.65 | 52.68 | 61.11 | 11.08 | 14.99 | 11.09 | 5.85 | 55.07 | 13.31 | 1.50 | 1.0 | | | | | | | |
| | S | 66.65 | 52.30 | 61.11 | 10.62 | 14.99 | 11.21 | 6.05 | 55.07 | 13.31 | 1.10 | 0.8 | | | | | | | |
| 37 | P | 68.94 | 55.30 | 63.50 | 8.23 | 12.17 | 11.09 | 5.85 | 57.45 | 10.46 | 1.50 | 1.0 | | | | | | | |
| | S | 68.94 | 54.71 | 63.50 | 7.77 | 12.17 | 11.21 | 6.05 | 57.45 | 10.46 | 1.10 | 0.8 | | | | | | | |
| 25 | P | 52.65 | 38.84 | 47.04 | 8.23 | 12.17 | 11.07 | 5.85 | 41.02 | 10.46 | 1.10 | 0.8 | | | | | | | |
| | S | 52.65 | 38.25 | 47.04 | 7.77 | 12.17 | 11.21 | 6.05 | 41.02 | 10.46 | 1.10 | 0.8 | | | | | | | |
| 15 | P | 38.76 | 25.12 | 33.32 | 8.23 | 12.17 | 10.99 | 5.85 | 27.25 | 10.46 | 1.10 | 0.8 | | | | | | | |
| | S | 38.76 | 24.54 | 33.32 | 7.77 | 12.17 | 11.21 | 6.05 | 27.25 | 10.46 | 1.10 | 0.8 | | | | | | | |
| 09 | P | 30.43 | 16.79 | 24.99 | 8.23 | 12.17 | 10.99 | 5.85 | 19.02 | 10.46 | 1.10 | 0.8 | | | | | | | |
| | S | 30.43 | 16.21 | 24.99 | 7.77 | 12.17 | 11.21 | 6.05 | 19.02 | 10.46 | 1.10 | 0.8 | | | | | | | |
| | SHELL SIZE | A-0 | +0.76 | B-0 | +0.25 | C ±0.12 | D ±0.25 | E-0 | +0.76 | F MAX | +0.15 | G-0 | +0.51 | H-0 | +0.51 | J-0 | K±0.20 | L-0 | +0.22 |

TECHNICAL SPECIFICATIONS

| | |
|-----------------------------|--|
| SHELLS | : TIN/CADMIUM/ZINC PLATED STEEL |
| INSULATOR MATERIAL | : SELF EXTINGUISHING THERMOPLASTIC- TO UL CLASS 94 V0 |
| | THE HOUSING WILL WITHSTAND EXPOSURE TO 260-265°C IF WE USE PROTECTIVE ADHESIVE (type Kapton or Teflon) OR PROTECTIVE METALLIC DEVICE |
| CONTACTS DIA ON ACTIVE AREA | : Ø1 MM. |
| CONTACTS MATERIAL | : COPPER ALLOY |
| CONTACT PLATING | : GOLD OVER NICKEL |
| OPERATING TEMPERATURE | : -55°C +125°C |
| OPERATING CURRENT | : 7.5 A PER CONTACT |
| CONTACT RESISTANCE | : <7.3 mΩ |
| INSULATION RESISTANCE | : >5000 MΩ |
| MAXIMUM VOLTAGE | : 1000 V.r.m.s |
| MECHANICAL ENDURANCE | : 500 MATINGS FOR >0.75µ GOLD PLATING |
| | : 200 MATINGS FOR <0.40µ GOLD PLATING |
| DAMP HEAT | : 56 DAYS FOR >0.75µ GOLD PLATING |
| | : 21 DAYS FOR <0.40µ GOLD PLATING |

"This LF product meets European Union Directives and other country regulations as described in GS-22-008"

The housing will withstand exposure to 260°C peak temperature for 3.5 seconds in a wave solder application with a 1.6mm minimum thick circuit board.

Pckaging as per GS-14-920

NOTE:-INSIDE DIMENSIONS OF MALE AND OUTSIDE DIMENSIONS OF THE FEMALE CONNECTOR.

| | | | | | |
|-------------|----------------|----------|----------------------------|---------------------------------------|--|
| mat'l. code | SEE NOTE 4 | surface | tolerance | projection | product family |
| | | ISO 1302 | ISO 406 ISO 1101 | | D-SUB |
| ltr | ecn no | dr | date | tolerances unless otherwise specified | title |
| F | I06-0074 | GVJ | 2006-06-08 | | D-SUB S/S,W/W CONNECTOR |
| G | I08-0047 | AMR | 2008-03-25 | angles linear | (DP & DM SERIES WITH ASSEMBLY OPTIONS) |
| H | I08-0125 | AMR | 2008-09-25 | | |
| J | I08-0139 | AMR | 2008-10-13 | dr | Mini K Vandanath 1999-03-20 |
| | | enr | George V Joseph 1999-03-20 | chr | Abhilash M R 2008-09-25 |
| | | appd | Sudhir Varma 2008-09-25 | scale | - |
| sheet index | revision sheet | J | 1 | | FCI |
| | | | | | dwg no |
| | | | | | sheet 1 of 1 |
| | | | | | size |
| | | | | | A3 |
| | | | | | type |
| | | | | | Product Customer Drawing |