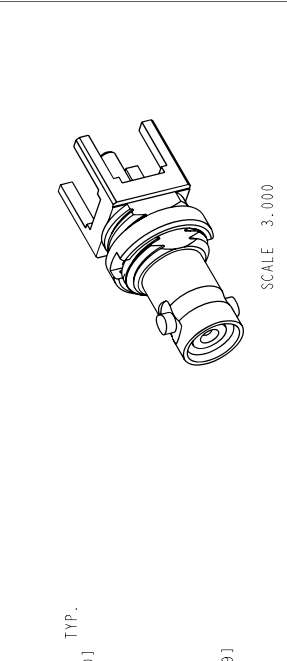
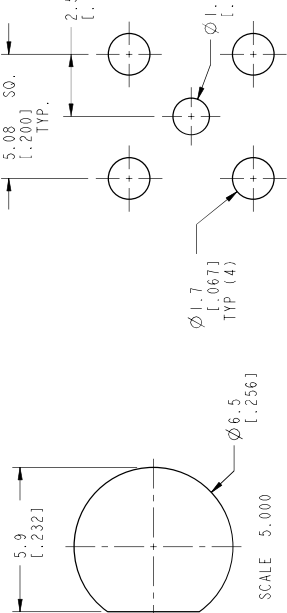


NOTES:	THIRD ANGLE PROJ.	REVISIONS		
	REV A	DESCRIPTION RELEASE TO MFG.	DATE 08-Apr-13	APPR 49282



SCALE 3.000

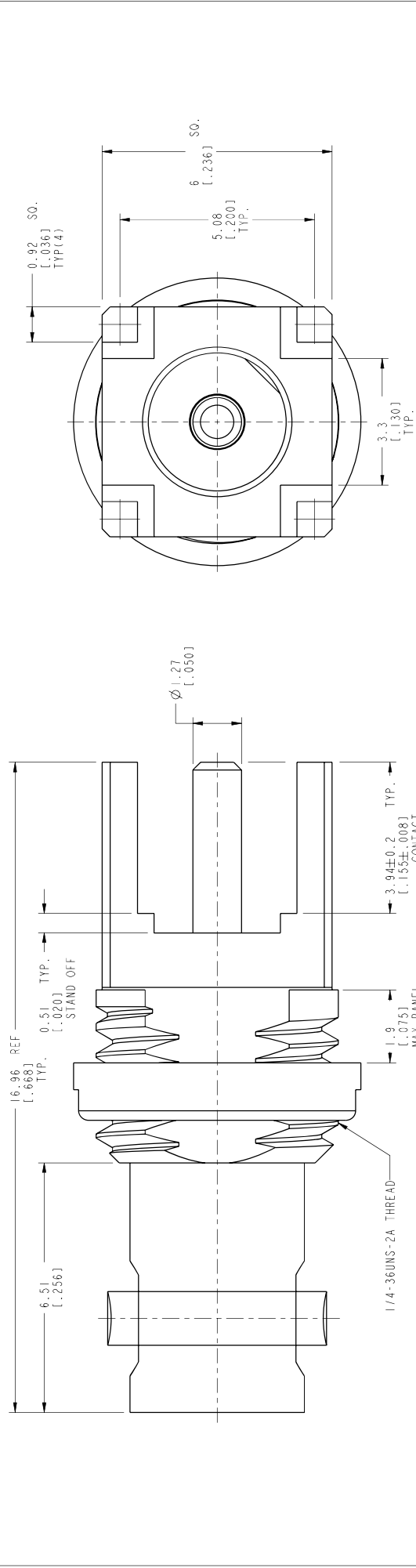


SCALE 5.000

RECOMMENDED PANEL CUTOUT DIMENSIONS

RECOMMENDED MOUNTING HOLE DIMENSIONS

- MATERIALS AND FINISHES:
 - A. BODY, NUT - BRASS, NICKEL PLATING.
 - B. CONTACT - 6Cu, GOLD PLATING.
 - C. INSULATOR - PTFE
- ELECTRICAL:
 - A. IMPEDANCE: 50 OHM
 - B. FREQUENCY RANGE: DC - 6 GHz
 - C. RETURN LOSS: 30 dB MIN @ 6 GHz
- MECHANICAL:
 - A. DURABILITY: 500 CYCLES MIN.
 - B. TEMPERATURE RANGE: -65°C TO +165°C
- ENVIRONMENTAL:
 - A. THERMAL SHOCK PER MIL-STD-202 METHOD 107
 - B. TEST CONDITION B (EXCEPT HIGH TEMP @200°C)
 - C. VIBRATION: MIL-STD-202 METHOD 204 TEST CONDITION B
 - D. SHOCK: MIL-STD-202 METHOD 213 TEST CONDITION B
 - E. CORROSION: MIL-STD-202 METHOD 101 TEST CONDITION B 5% SALT SOLUTION
- PACKAGING:
 - A. QUANTITY: SINGLE PACK
 - B. MARKING: BAG TO BE MARKED: "AMPHENOL REF, 34-5023, AND DATE CODE"



CUSTOMER OUTLINE DRAWING
ALL OTHER SHEETS ARE FOR INTERNAL USE ONLY

UNLESS OTHERWISE SPECIFIED, DIMENSIONS ARE IN METRIC AND TOLERANCES ARE: $\pm 0.3mm$ $0.5 - 6mm$ $\pm 0.1mm$ $6 - 30mm$ $30 - 120mm$ ANGLES $\pm 0.05mm$ $\pm 0.1mm$ $\pm 0.2mm$ $\pm 0.3mm$	MATERIAL	DRAWN T.DENIG	DATE 08-Apr-13	TITLE 50 OHM HD BNC BHD JACK PCB THRU HOLE RECEPTACLE 4 LEGS	Amphenol RF www.amphenolrf.com
NOTICE: These drawings, specifications, or other data (1) are, and remain the property of Amphenol Corp. (12) must be returned upon request, and (3) are confidential and not to be disclosed to any person other than those to whom they are intended, and (4) shall remain the property of Amphenol Corp. All other data by Amphenol Corp., or to any other person to engage for any purpose is not to be regarded by implication or otherwise in any manner, licensing, granting rights to permitting such holder or any other person to manufacture, use or sell any product, process or design, patented or otherwise, that may in any way be related to or disclosed by said drawings, specifications, or other data.	SEE NOTES	ENGINEER CLEMMENT	DATE 11-Jul-12	SCALE: 10.0:1.0 SHEET 2 OF 2	DRAWING NO. 34-5023
	REFERENCE EAR # 5400	APPROVED H.HE	DATE 08-Apr-13	DWG SIZE B	ITEM NO. 34-5023
FINISH	CONFIGURATION LEVEL:	CAD FILE	REV A	PART NO. 34-5023	