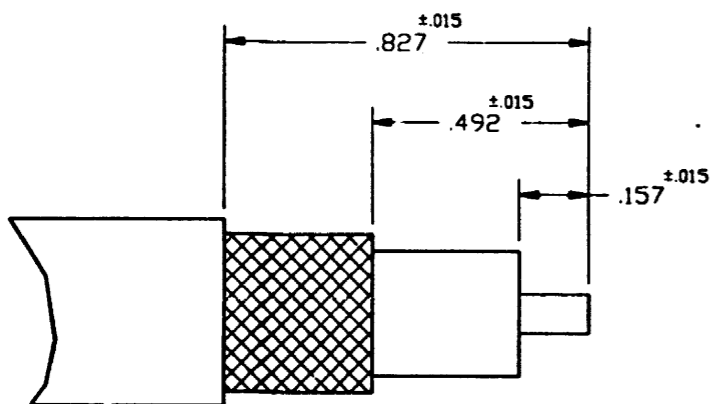
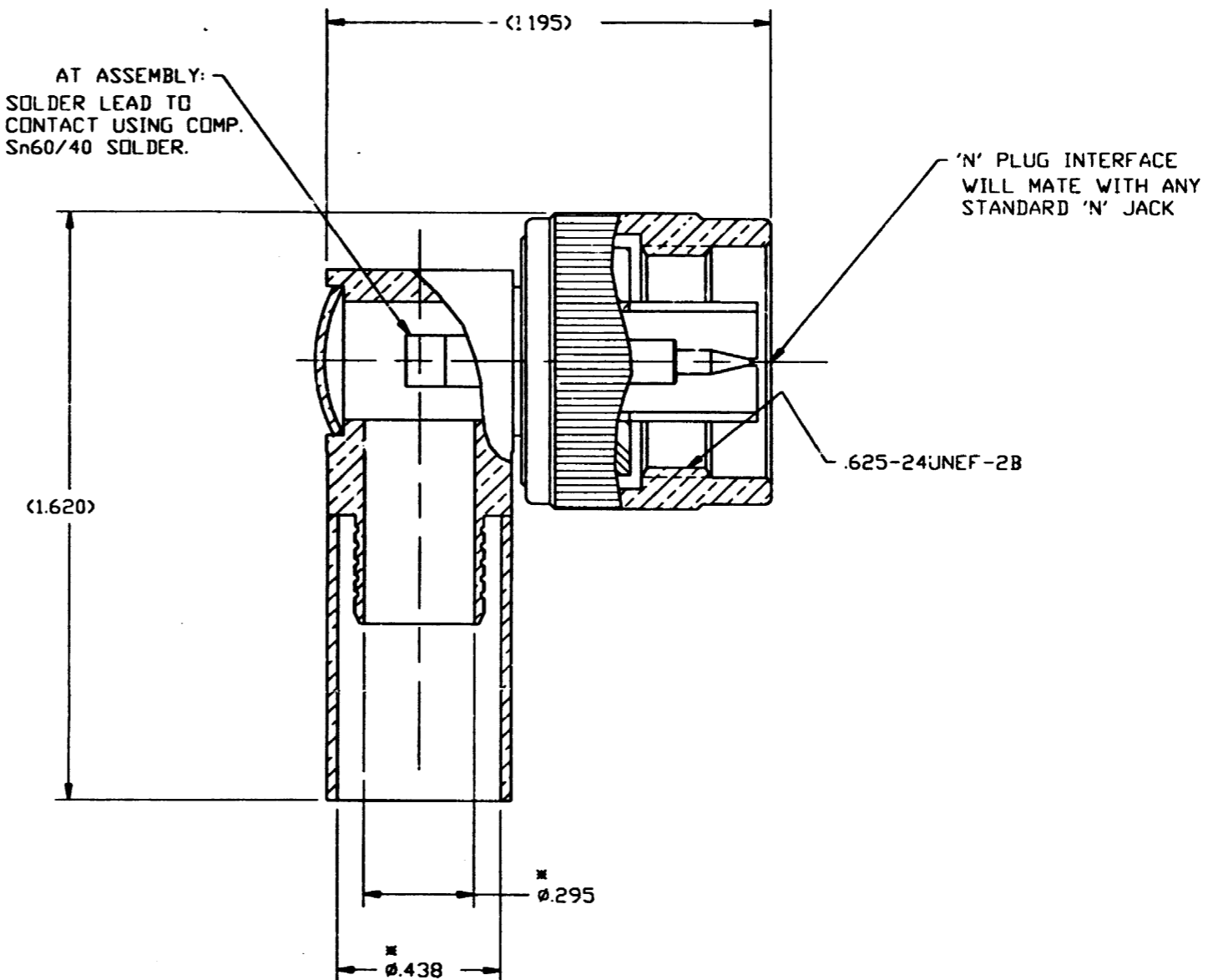


NOTES:

- MATERIALS:**
 CONTACT - BRASS, GOLD PLATED.
 INSULATOR - PTFE
 CUBE BODY - BRASS, SILVER PLATED.
 SLOTTED BODY - BRASS, SILVER PLATED.
 END CAP - BRASS, SILVER PLATED.
 FERRULE - COPPER, SILVER PLATED.
 COUPLING NUT - BRASS, SILVER PLATED.
 SNAP RING - PHOSPHOR BRONZE.
 GASKET - SILICONE RUBBER.
- ASTERISK (*) INDICATES CABLE ENTRY DIMENSIONS.
- CRIMP WITH TOOL 227-944 AND DIE SET 227-1221-25, CAVITY 'A' OR USE CRIMP TOOL CTL-3, CAVITY NUMBER 2. SEE AMPHENOL SPEC. 349-50621 FOR COMPLETE ASSEMBLY INSTRUCTIONS.
- DIMENSIONS IN PARENTHESIS ARE REFERENCE.

82-5988-1000		REVISIONS			
DRAWING NO.	REV	DESCRIPTION	DATE	ECO	APPR
THIRD ANGLE PROJ.	A	RELEASE TO MFG.	11/20/95	41044	RF/RAV
	B	SEE SHEET ONE FOR REVISIONS	4/14/97	41866	CPM/DR



RECOMMENDED CABLE STRIPPING DIMENSIONS

CUSTOMER OUTLINE DRAWING

UNLESS OTHERWISE SPECIFIED, DIMENSIONS ARE IN INCHES AND TOLERANCES ARE: 2 PLACE DECIMAL ±.015 (0,381 mm) 3 PLACE DECIMAL ±.005 (0,127 mm) ANGLES ± 1°	MATERIAL	DRAWN R. FAZIO ENGINEER R. FAZIO APPROVED R. VACCARO	DATE 11/3/95 DATE 11/3/95 DATE 11/16/95	TITLE QUICK CRIMP 'N' RT. ANGLE PLUG FOR RG-214 & RG-393 CABLES	Amphenol Amphenol Corporation RF/Microwave Operations Danbury, Conn. U.S.A. 06810
	REFERENCE EAR 964686-1	CAD FILE H:\DEPT611\N\082\ASSY\5988\1000SH2.DWG	CODE ID 74868 DWG SIZE B DRAWING NO. 82-5988-1000		