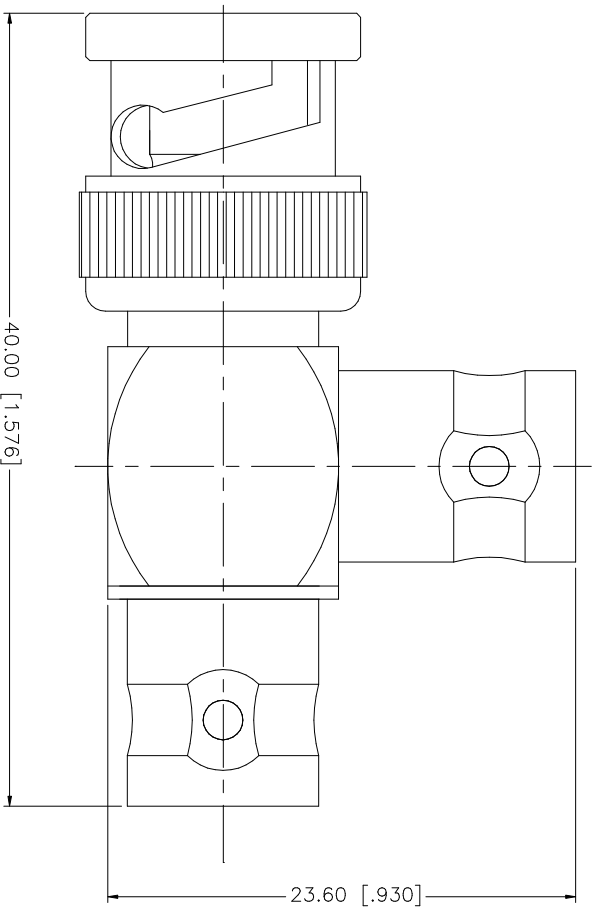


REV.	DATE	DESCRIPTION
A	11/21/03	UPDATE DRAWING FORMAT



QTY	FINISH	MATERIAL	DESCRIPTION
1	GOLD	BRASS	CONTACT PIN
1	NATURAL	DELFIN	INSULATOR
1	GOLD	BRASS	BODY
			DESCRIPTION

UNLESS OTHERWISE SPECIFIED DIMENSIONS ARE IN MILLIMETERS. DIMENSIONS IN [] ARE IN INCHES AND FOR CUSTOMER REFERENCE ONLY.	
TOLERANCES FOR MILLIMETERS ARE:	
0.5 - 8mm	± 0.20mm
B - 30mm	± 0.40mm
30 - 120mm	± 0.30mm
UNLESS OTHERWISE SPECIFIED TOLERANCES FOR INCHES ARE:	
.020 - .315	± 0.007"
.315 - 1.180	± 0.015"
1.180 - 4.724	± 0.020"
DO NOT SCALE DRAWING	

APPROVALS	DATE
DRAWN G.R.S.	11/21/03
CHECKED	
ISSUED	
SHEET 1 OF 1	

CAD FILE C:/112/112567.DWG	DWG. NO. 112567DWG	REV. A	SIZE A	SCALE NA
----------------------------	--------------------	--------	--------	----------

PART DESCRIPTION	
BNC MALE TO DOUBLE BNC FEMALE	
PART NO.	112567

Amphenol Connex