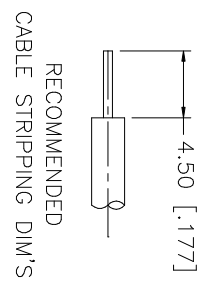
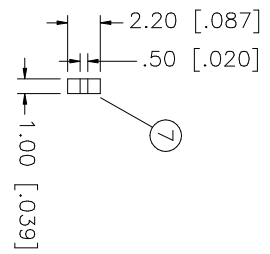
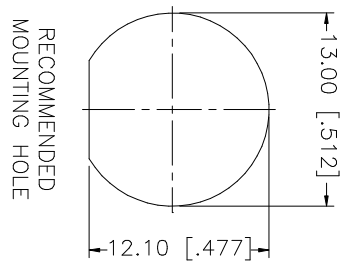
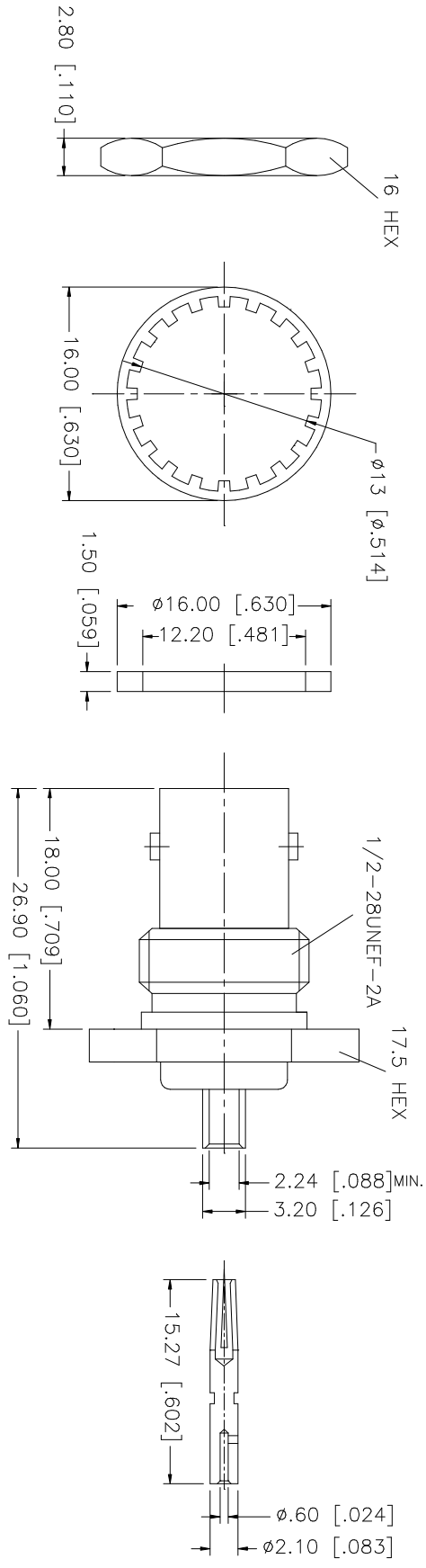


REV.	DATE	DESCRIPTION
A	10/08/03	MODIFY PART DIMENSIONS / UPDATE DRAWING FORMAT



DESCRIPTION	MATERIAL	FINISH	QTY	UNLESS OTHERWISE SPECIFIED, DIMENSIONS ARE IN MILLIMETERS. DIMENSIONS IN [] ARE IN INCHES AND FOR CUSTOMER REFERENCE ONLY.	UNLESS OTHERWISE SPECIFIED, TOLERANCES FOR MILLIMETERS ARE:	UNLESS OTHERWISE SPECIFIED, TOLERANCES FOR INCHES ARE:	APPROVALS	DATE	PART DESCRIPTION				
8									Amphenol Connex BNC BULKHEAD DIRECT SOLDER JACK (FOR .085", .086" CABLE) 112580				
7	INSULATOR	TEFLON	1				DRAWN	G.R.S.		10/08/03			
6	HEX NUT	BRASS	1				CHECKED						
5	LOCK WASHER	BRASS	1		0.5 - 8mm ± 0.20mm		ISSUED						
4	GASKET	RUBBER	1		8 - 30mm ± 0.40mm		SHEET	1 OF 1					
3	CONTACT PIN	PHOS. BRONZE	1		30 - 120mm ± 0.50mm								
2	INSULATOR	TEFLON	1			UNLESS OTHERWISE SPECIFIED, TOLERANCES FOR MILLIMETERS ARE: .020 - .315 = ± 0.007" .315 - 1.180 = ± 0.015" 1.180 - 4.724 = ± 0.020"							
1	BODY	BRASS	1										
DESCRIPTION				MATERIAL	FINISH	QTY	DO NOT SCALE DRAWING		CAD FILE	DWG. NO.	REV.	SIZE	SCALE
							C:/112112580.DWG			112580.DWG	A	A	NA