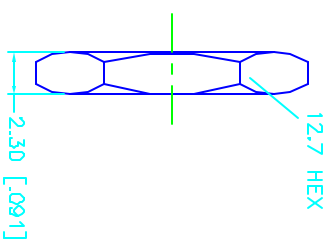
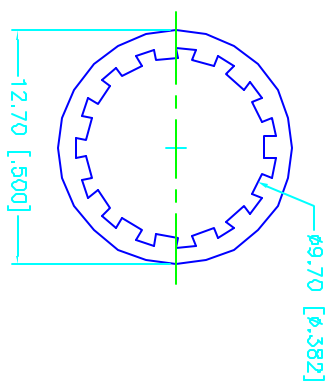
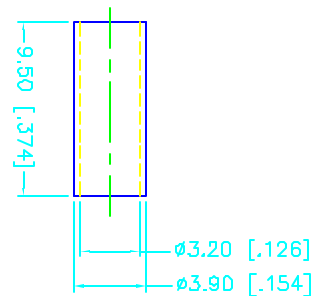
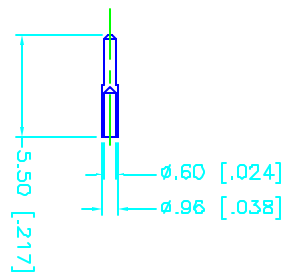
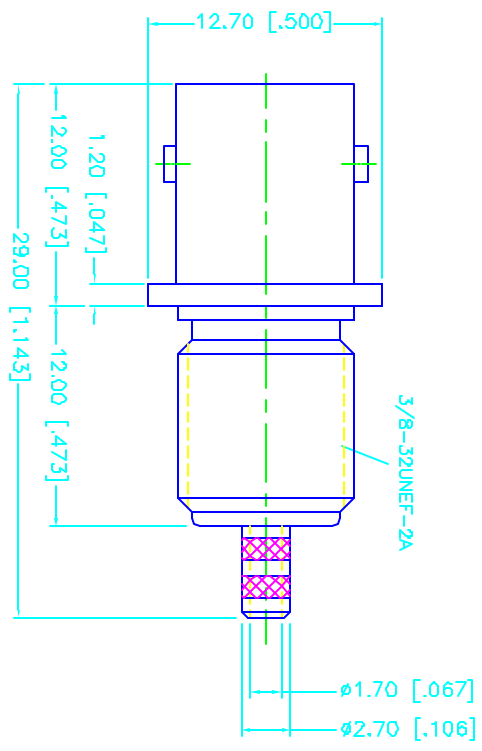
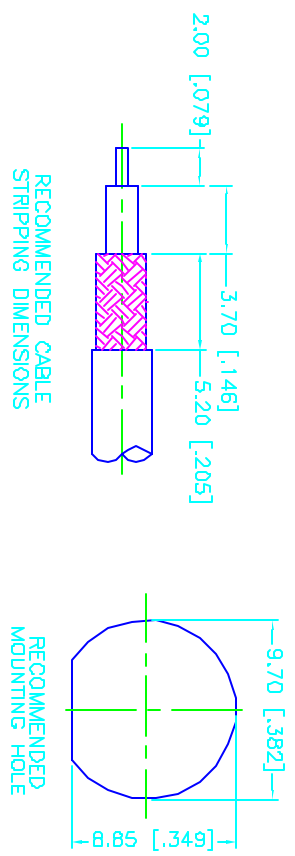
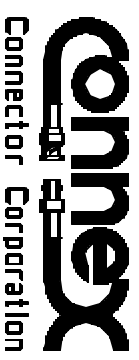


REV.	DATE	DESCRIPTION
NC	04/02/98	INITIAL RELEASE
A	05/11/98	ADD CABLE STRIPPING DIM'S



DESCRIPTION	MATERIAL	FINISH	UNLESS OTHERWISE SPECIFIED DIMENSIONS ARE IN MILLIMETERS FOR CUSTOMER REFERENCE ONLY	APPROVALS	DATE	TITLE	SCALE	SHEET
1 BODY	BRASS	NICKEL	UNLESS OTHERWISE SPECIFIED DIMENSIONS ARE IN MILLIMETERS FOR CUSTOMER REFERENCE ONLY UNLESS OTHERWISE SPECIFIED TOLERANCES FOR MILLIMETERS ARE: 0.5-6 = ± 0.2 6-30 = ± 0.4 30-120 = ± 0.6 120-315 = ± 1 315-1000 = ± 1.6 1000-2000 = ± 2.4	DRAWN	05/11/98	BNC BULKHEAD CRIMP JACK (front mount) 174, 188, 316 CABLE	NA	1
2 INSULATOR	TEFLON	NATURAL		CHECKED				
3 CONTACT PIN	PHOS. BRONZE	GOLD		ISSUED				
4 FERRULE	BRASS	NICKEL						
5 LOCK WASHER	BRASS	NICKEL						
6 HEX NUT	BRASS	NICKEL						
7								
8				DO NOT SCALE DRAWING				



SIZE	FORM NO.	DWG. NO.	REV.
A	99001	112587.DWG	A