

Distributed by:

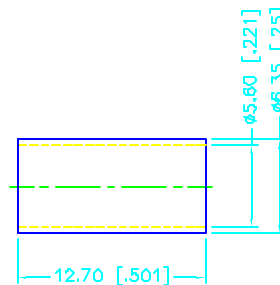
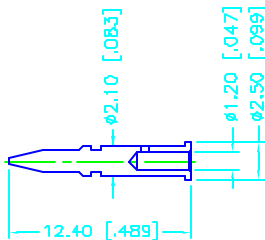
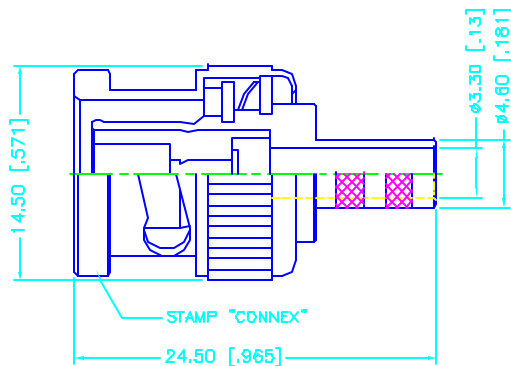
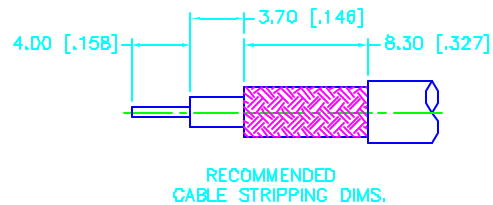
JAMECO[®]
ELECTRONICS


www.Jameco.com ♦ 1-800-831-4242

The content and copyrights of the attached
material are the property of its owner.

Jameco Part Number 295988

REV.	DATE	DESCRIPTION
NC	07/29/98	INITIAL RELEASE



DESCRIPTION	MATERIAL	FINISH	UNLESS OTHERWISE SPECIFIED DIMENSIONS ARE IN MILLIMETERS	APPROVALS	DATE					
1	BODY	BRASS	NICKEL	DRAWN	G.R.S.					07/29/98
2	INSULATOR	TEFLON	NATURAL	CHECKED						
3	CONTACT PIN	BRASS	GOLD	ISSUED			TITLE			
4	FERRULE	COPPER	NICKEL				BNC CRIMP PLUG - LMR 200			
5							SIZE	FSDN NO.	DWG. NO.	REV.
6							A	99001	112597.DWG	NC
7							SCALE	PART NO.	SHEET	
8			DO NOT SCALE DRAWING				NA	112597	1 OF 1	

UNLESS OTHERWISE SPECIFIED
DIMENSIONS IN [] ARE IN INCHES
FOR CUSTOMER REFERENCE ONLY

UNLESS OTHERWISE SPECIFIED
TOLERANCES FOR MILLIMETERS ARE:

0.3-0.6 = ± 0.2
0.6-3.0 = ± 0.4
3.0-12.0 = ± 0.6
12.0-31.5 = ± 1
31.5-100.0 = ± 1.6
100.0-200.0 = ± 2.4