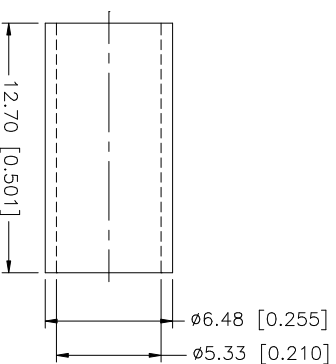
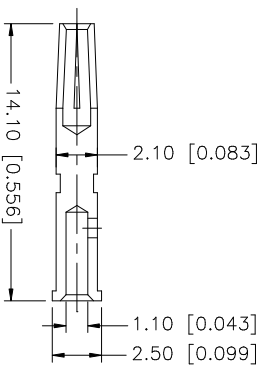
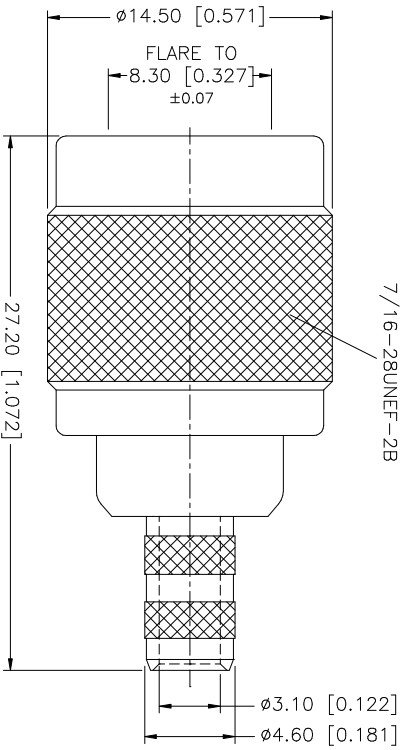
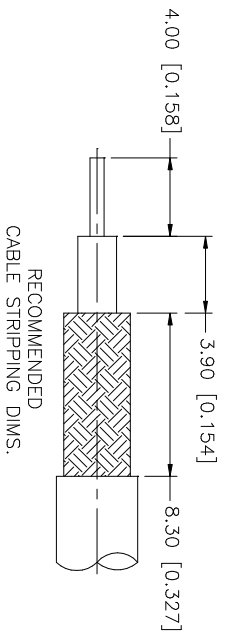


REV.	DATE	DESCRIPTION
A	02/24/03	UPDATE DRAWING FORMAT



- NOTE:
1. CRIMPED FERRULE  
HEX CRIMP SIZE .213"
  2. CRIMPED CONTACT PIN  
HEX CRIMP SIZE .068"

QTY	DESCRIPTION	MATERIAL	FINISH	QTY	DO NOT SCALE DRAWING	APPROVALS	DATE	PART DESCRIPTION	DWG. NO.	REV.	SIZE	SCALE	
1	INSULATOR	TEFLON	NATURAL	1				<p><b>Amphenol Connex</b></p> <p>TNC REVERSE POLARITY CRIMP PLUG (FOR RG-58/U, 141/U CABLE)</p> <p>122108RP</p>	122108RP.DWG	A	A	NA	
1	SHELL/BODY	BRASS	NICKEL	1									
1	CONTACT PIN	BRASS	GOLD	1									
1	FERRULE	COPPER	NICKEL	1									
1	GASKET	RUBBER	RED	1									
1	INSULATOR	TEFLON	NATURAL	1									
1	CONTACT PIN	BRASS	GOLD	1									
1	SHELL/BODY	BRASS	NICKEL	1									
1	DESCRIPTION	MATERIAL	FINISH	QTY	DO NOT SCALE DRAWING	APPROVALS	DATE		PART DESCRIPTION	DWG. NO.	REV.	SIZE	SCALE
1				1									
1				1									
1				1									
1				1									

UNLESS OTHERWISE SPECIFIED DIMENSIONS ARE IN INCHES AND FOR CUSTOMER REFERENCE ONLY.

UNLESS OTHERWISE SPECIFIED TOLERANCES FOR ALL DIMENSIONS ARE:

0.5 - 8mm ± 0.20mm  
8 - 30mm ± 0.40mm  
30 - 120mm ± 0.50mm

UNLESS OTHERWISE SPECIFIED TOLERANCES FOR INCHES ARE:

.020 - .315 = ± 0.007"  
.315 - 1.180 = ± 0.015"  
1.180 - 4.724 = ± 0.020"

DO NOT SCALE DRAWING

APPROVALS	DATE
G.R.S.	02/24/03

CAD FILE	DWG. NO.	REV.	SIZE	SCALE
C:/122/122108RP.DWG	122108RP.DWG	A	A	NA