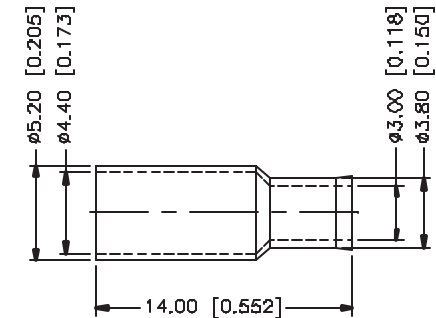
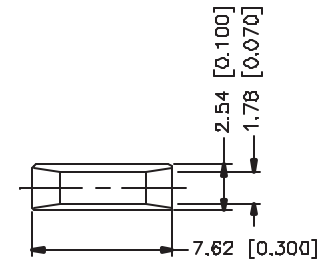
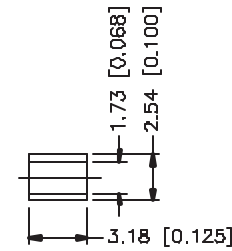
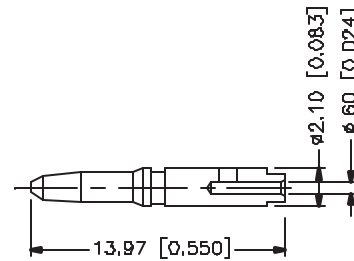
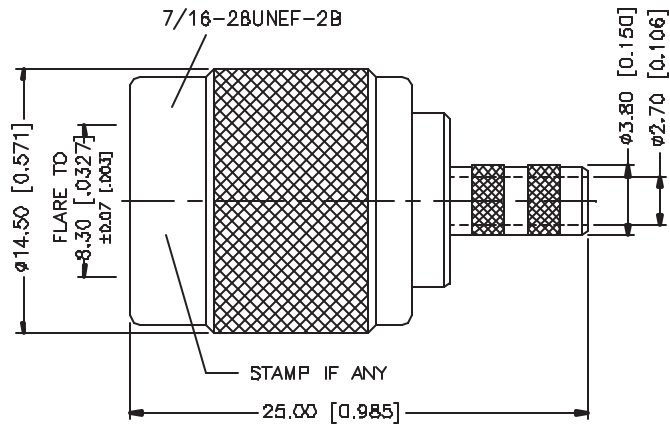
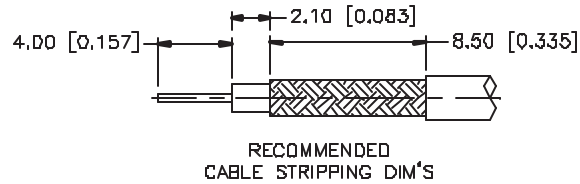


REV.	DATE	DESCRIPTION
A	02/06/00	UPDATE DIMENSIONS - ADD SLEEVE
B	11/25/03	UPDATE DIMENSIONS



CRIMP NOTES:

1. CRIMPED FERRULE
HEX SIZE .178"
2. CRIMPED CONTACT PIN
HEX CRIMP SIZE .068"
3. VSWR 1.6 MAX. UP TO 3 GHz

				UNLESS OTHERWISE SPECIFIED DIMENSIONS ARE IN MILLIMETERS; DIMENSIONS IN [] ARE IN INCHES AND FOR CUSTOMER REFERENCE ONLY.	APPROVALS	DATE	<h1 style="text-align: center;">Amphenol Connex</h1>				
8					DRAWN	G.R.S.					11/25/03
7	FERRULE	BRASS	NICKEL	1	CHECKED			PART NO. 122116			
6	SPACER	BRASS	NICKEL	1	ISSUED						
5	SLEEVE	TEFLON	NATURAL	1	SHEET	1 OF 1		CAD FILE C:/122/122116.DWG			
4	RETAINER RING	BRASS	NICKEL	1							
3	INSULATOR	TEFLON	NATURAL	1							
2	CONTACT PIN	BRASS	GOLD	1							
1	SHELL/BODY	BRASS	NICKEL	1							
	DESCRIPTION	MATERIAL	FINISH	QTY							