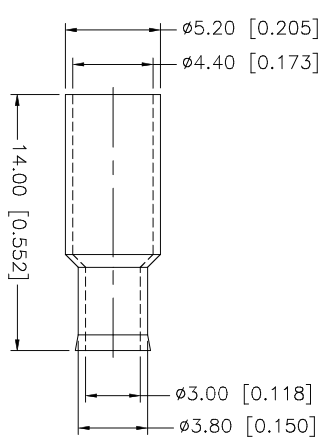
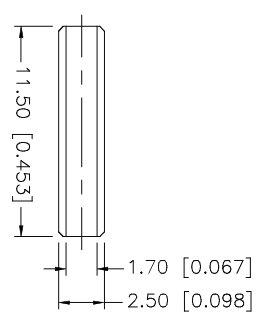
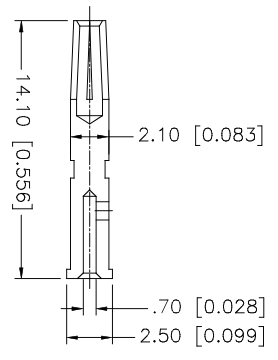
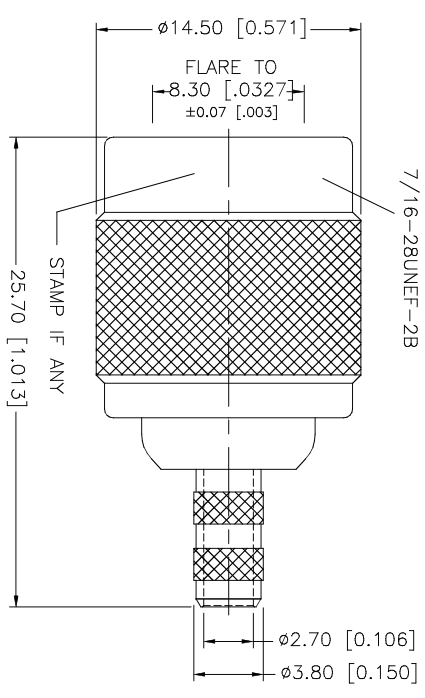
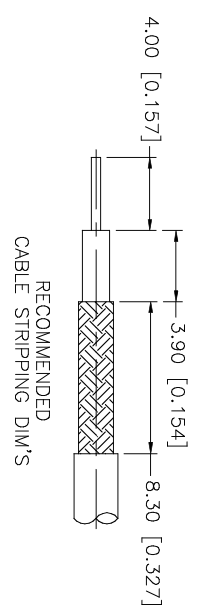


REV.	DATE	DESCRIPTION
A	02/24/03	UPDATE DRAWING FORMAT



- CRIMP NOTES:
1. CRIMPED FERRULE  
HEX SIZE .178"
  2. CRIMPED CONTACT PIN  
HEX CRIMP SIZE .068"

QTY	DESCRIPTION	MATERIAL	FINISH	QTY	DO NOT SCALE DRAWING
1	SHELL/BODY	BRASS	NICKEL	1	1,180 - 4.724 = ± 0.020"
1	CONTACT PIN	PHOS. BRONZE	GOLD	1	.020 - .315 = ± 0.007"
1	INSULATOR	TEFLON	NATURAL	1	.315 - 1.180 = ± 0.015"
1	SLEEVE	DELRIN	NATURAL	1	1.180 - 4.724 = ± 0.020"
1	FERRULE	COPPER	NICKEL	1	0.5 - 8mm ± 0.20mm
1	INSULATOR	DELRIN	NATURAL	1	8 - 30mm ± 0.40mm
1	INSULATOR	TEFLON	NATURAL	1	30 - 120mm ± 0.50mm
1	CONTACT PIN	PHOS. BRONZE	GOLD	1	0.020 - .315 = ± 0.007"
1	SHELL/BODY	BRASS	NICKEL	1	.315 - 1.180 = ± 0.015"
1	SHELL/BODY	BRASS	NICKEL	1	1.180 - 4.724 = ± 0.020"

APPROVALS	DATE
DRAWN G.R.S.	02/24/03
CHECKED	
ISSUED	
SHEET 1 OF 1	

PART DESCRIPTION	PART NO.
TNC REVERSE POLARITY CRIMP PLUG (FOR RG-174/U, 188/U, 316/U CABLE)	122116RP

CAD FILE	DWG. NO.	REV	SIZE	SCALE
C:/122/122116RP.DWG	122116RP.DWG	A	A	NA

**Amphenol Connex**