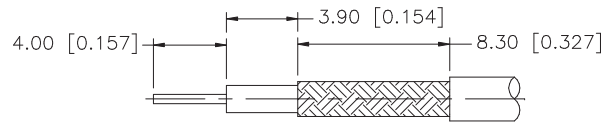
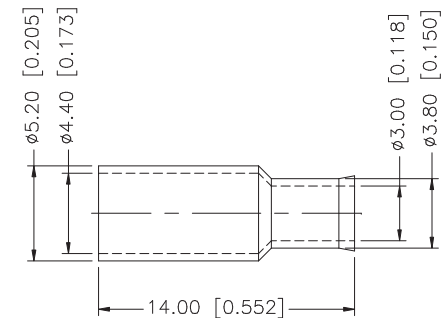
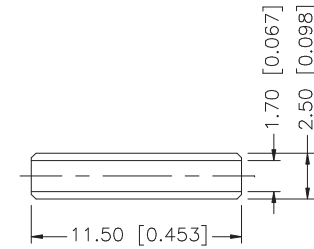
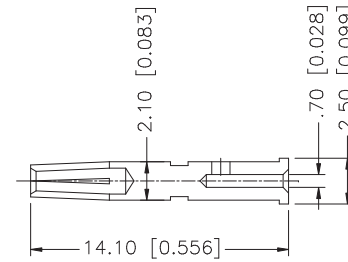
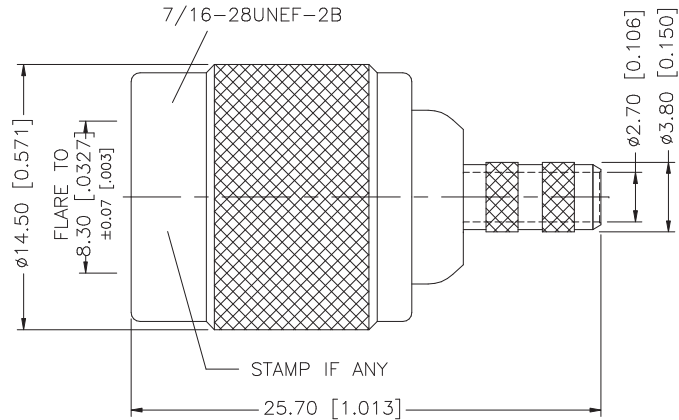


| REV. | DATE     | DESCRIPTION           |
|------|----------|-----------------------|
| A    | 02/24/03 | UPDATE DRAWING FORMAT |



RECOMMENDED  
CABLE STRIPPING DIM'S



CRIMP NOTES:

1. CRIMPED FERRULE  
HEX SIZE .178"
2. CRIMPED CONTACT PIN  
HEX CRIMP SIZE .068"

|   |             |              |         |     |
|---|-------------|--------------|---------|-----|
| 8 |             |              |         |     |
| 7 |             |              |         |     |
| 6 |             |              |         |     |
| 5 | FERRULE     | COPPER       | NICKEL  | 1   |
| 4 | SLEEVE      | DELIN        | NATURAL | 1   |
| 3 | INSULATOR   | TEFLON       | NATURAL | 1   |
| 2 | CONTACT PIN | PHOS. BRONZE | GOLD    | 1   |
| 1 | SHELL/BODY  | BRASS        | NICKEL  | 1   |
|   | DESCRIPTION | MATERIAL     | FINISH  | QTY |

UNLESS OTHERWISE SPECIFIED DIMENSIONS ARE IN MILLIMETERS. DIMENSIONS IN [ ] ARE IN INCHES AND FOR CUSTOMER REFERENCE ONLY.

UNLESS OTHERWISE SPECIFIED TOLERANCES FOR MILLIMETERS ARE:  
0.5 - 8mm ± 0.20mm  
8 - 30mm ± 0.40mm  
30 - 120mm ± 0.50mm

UNLESS OTHERWISE SPECIFIED TOLERANCES FOR INCHES ARE:  
.020 - .315 = ± 0.007"  
.315 - 1.180 = ± 0.015"  
1.180 - 4.724 = ± 0.020"

DO NOT SCALE DRAWING

| APPROVALS    | DATE                |
|--------------|---------------------|
| DRAWN G.R.S. | 02/24/03            |
| CHECKED      |                     |
| ISSUED       |                     |
| SHEET 1 OF 1 |                     |
| CAD FILE     | C:/122/122116RP.DWG |

# Amphenol Connex

|                  |   |      |   |          |
|------------------|---|------|---|----------|
| PART DESCRIPTION | TNC REVERSE POLARTIY CRIMP PLUG<br>(FOR RG-174/U, 188/U, 316/U CABLE) |      |   |          |
| PART NO.         | 122116RP  |      |   |          |
| DWG. NO.         | 122116RP.DWG  | REV. | A | SCALE NA |