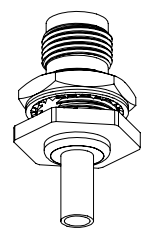
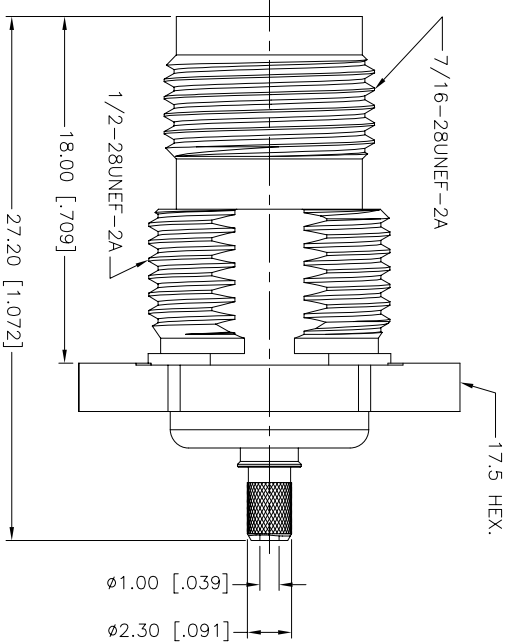
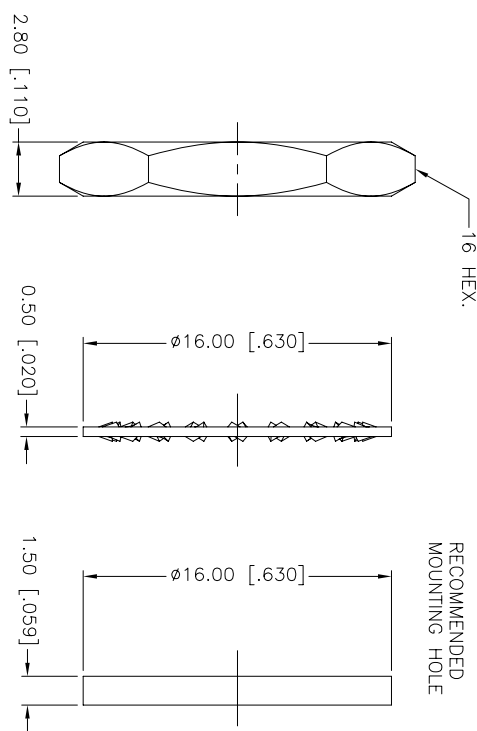
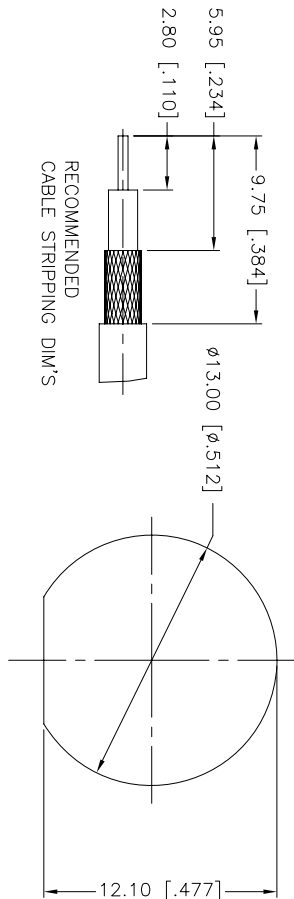
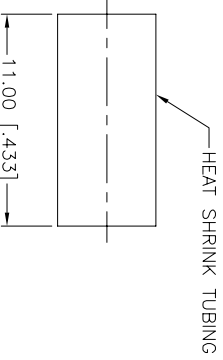
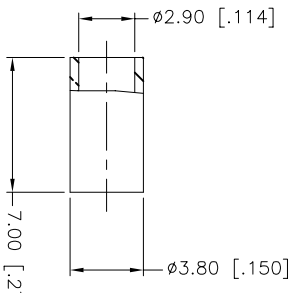
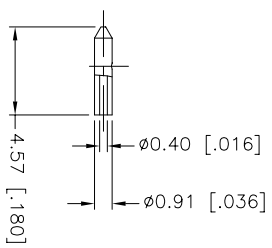


| REV. | DATE | ECR. NO. | DESCRIPTION |
|------|----------|----------|-----------------|
| NC | 02/23/10 | XXXXXX | INITIAL RELEASE |



SCALE 1.000



1. CRIMPED FERRULE
HEX CRIMP SIZE: .128"
2. CRIMPED CONTACT PIN
SQ. CRIMP SIZE 0.7(mm)
3. MAX. PANEL THICKNESS=4.2mm

| UNLESS OTHERWISE SPECIFIED DIMENSIONS ARE IN INCHES AND FOR CUSTOMER REFERENCE ONLY. | UNLESS OTHERWISE SPECIFIED TOLERANCES FOR MILLING ARE: | UNLESS OTHERWISE SPECIFIED DIMENSIONS ARE IN INCHES AND FOR CUSTOMER REFERENCE ONLY. | UNLESS OTHERWISE SPECIFIED TOLERANCES FOR MILLING ARE: |
|--|--|--|--|
| 0.3 - 8mm ± 0.20mm | 0.020 - .315 = ± 0.007" | 8 - 30mm ± 0.40mm | 0.315 - 1.180 = ± 0.015" |
| 30 - 120mm ± 0.50mm | 1.180 - 4.724 = ± 0.020" | | |

| APPROVALS | DATE | PART DESCRIPTION |
|--------------|----------|--|
| DRAWN K.LI | 02/23/10 | TNC BULKHEAD CRIMP JACK IP-67 COMPLIANT (FOR RG-178B/U, RG-196A/U CABLE) |
| CHECKED | | |
| ISSUED | | |
| SHEET 1 OF 1 | | |

| DO NOT SCALE DRAWING | QTY | FINISH | MATERIAL | DESCRIPTION |
|----------------------|-----|---------|----------|-------------|
| | 1 | NICKEL | BRASS | BODY |
| | 1 | NATURAL | PtFE | INSULATOR |
| | 1 | GOLD | BRASS | CONTACT PIN |

| 3D0 FILE | DWG. NO. | REV. | NC | SIZE | SCALE |
|-------------------------|---------------|------|----|------|-------|
| C:/CONNEX/122370-11.DWG | 122370-11.DWG | | | A | NA |

Amphenol Connex