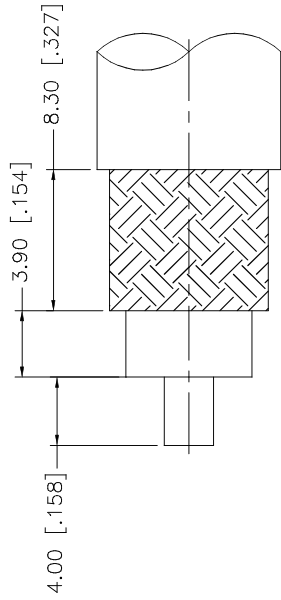
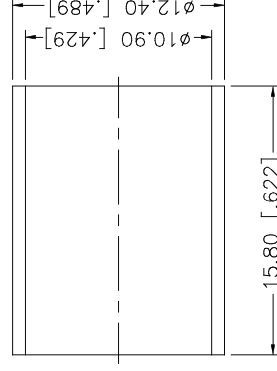
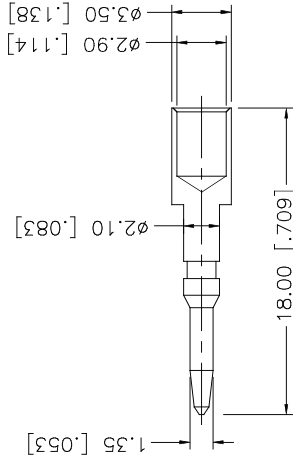
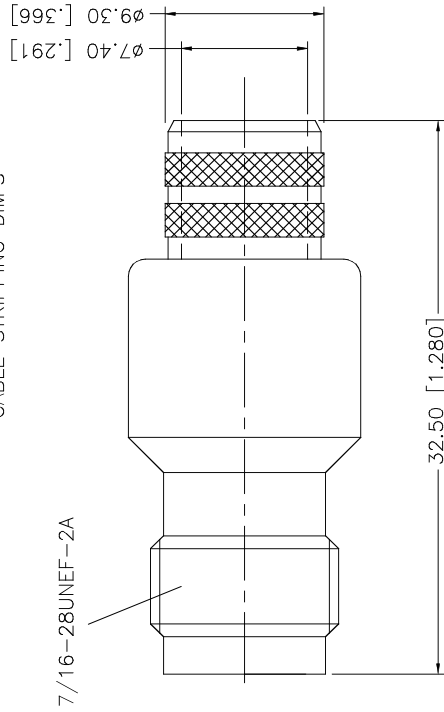


REV.	DATE	DESCRIPTION
NC	05/05/97	INITIAL RELEASE
A	01/11/07	UPDATE DRAWING FORMAT



RECOMMENDED  
CABLE STRIPPING DIM'S



NOTE:

1. CRIMPED FERRULE HEX CRIMP SIZE .429"
2. CRIMPED CONTACT PIN HEX CRIMP SIZE .118"

8				APPROVALS	DATE	
7				DRAWN G.R.S.	01/11/07	
6				CHECKED		
5				ISSUED		
4	FERRULE	COPPER	NICKEL	1	OF 1	
3	CONTACT PIN	BRASS	GOLD	1		
2	INSULATOR	TEFLON	NATURAL	1		
1	BODY	BRASS	NICKEL	1		
	DESCRIPTION	MATERIAL	FINISH	QTY		
<small>UNLESS OTHERWISE SPECIFIED DIMENSIONS ARE IN MILLIMETERS. DIMENSIONS IN [ ] ARE IN INCHES AND FOR CUSTOMER REFERENCE ONLY. UNLESS OTHERWISE SPECIFIED TOLERANCES FOR MILLIMETERS ARE: 0.5 - 8mm ± 0.20mm 8 - 30mm ± 0.40mm 30 - 120mm ± 0.50mm UNLESS OTHERWISE SPECIFIED TOLERANCES FOR INCHES ARE: .020 - .315 = ± 0.007" .315 - 1.180 = ± 0.015" 1.180 - 4.724 = ± 0.020"</small>						
DO NOT SCALE DRAWING						
CAD FILE C:/122/122392RP.DWG				DWG. NO. 122392RP.DWG		
				REV. A	SIZE A	SCALE NA
<h1 style="text-align: center;">Amphenol Connex</h1> <p style="text-align: center;">TNC REVERSE POLARITY CRIMP JACK (FOR BELDEN 9913, 9914)</p>						
PART DESCRIPTION						
PART NO. 122392RP						