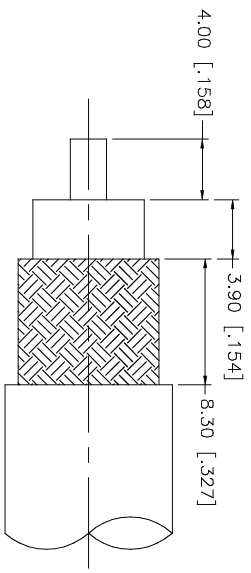
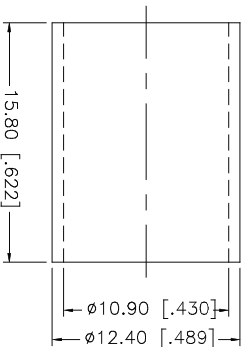
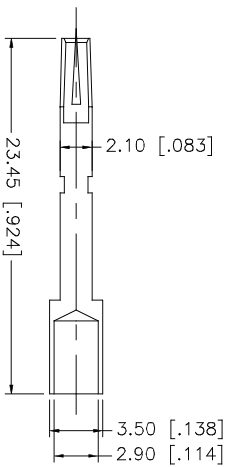
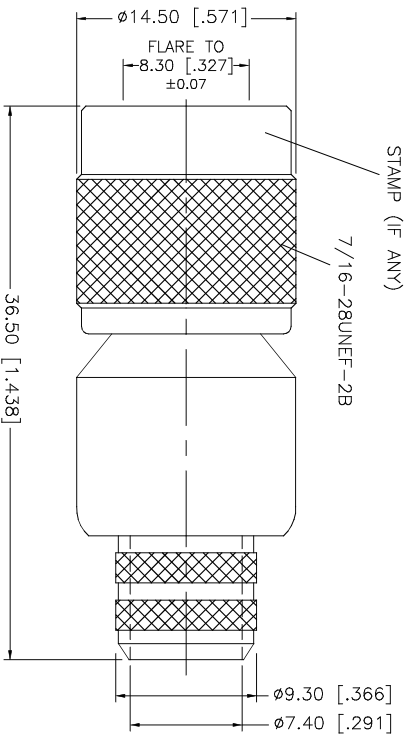


REV.	DATE	DESCRIPTION
A	04/05/03	UPDATE DRAWING FORMAT



RECOMMENDED CABLE STRIPPING DIMENSIONS



- NOTE:
1. CRIMPED FERRULE
HEX CRIMP SIZE .429"
 2. CONTACT PIN TO SOLDER
OR .118" HEX CRIMP

QTY	DESCRIPTION	MATERIAL	FINISH	FINISH	QTY	DO NOT SCALE DRAWING
1	SHELL/BODY	BRASS	NICKEL	NICKEL	1	1.160 - 4.724 = ± 0.020"
1	INSULATOR	TEFLON	NATURAL	NATURAL	1	.315 - 1.180 = ± 0.015"
1	CONTACT PIN	PHOS. BRONZE	GOLD	GOLD	1	.020 - .315 = ± 0.007"
1	GASKET	RUBBER	RED	RED	1	
1	FERRULE	COPPER	NICKEL	NICKEL	1	8 - 30mm ± 0.40mm
1					1	30 - 120mm ± 0.50mm
1					1	0.5 - 8mm ± 0.20mm
1					1	UNLESS OTHERWISE SPECIFIED TOLERANCES FOR MILLIMETERS ARE:
1					1	UNLESS OTHERWISE SPECIFIED TOLERANCES FOR INCHES ARE:
1					1	UNLESS OTHERWISE SPECIFIED DIMENSIONS ARE IN MILLIMETERS, DIMENSIONS IN [] ARE IN INCHES AND FOR CUSTOMER REFERENCE ONLY.

Amphenol Connex

TNC REVERSE POLARITY CRIMP PLUG
(FOR BELDEN 8214, 9913 LMR 400 CABLE)

APPROVALS	DATE
DRAWN G.R.S.	04/05/03
CHECKED	
ISSUED	
SHEET 1 OF 1	

CAD FILE	C:/122/122393RP.DWG	DWG. NO.	122393RP.DWG	REV.	A	SIZE	A	SCALE	NA
----------	---------------------	----------	--------------	------	---	------	---	-------	----