

Distributed by:

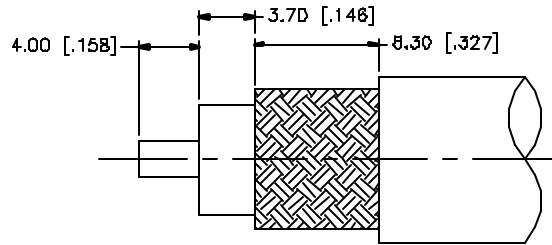
JAMECO[®]
ELECTRONICS

www.Jameco.com ♦ 1-800-831-4242

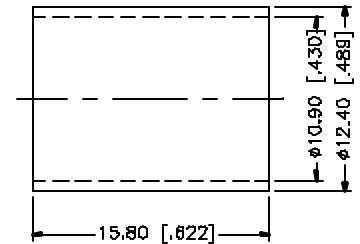
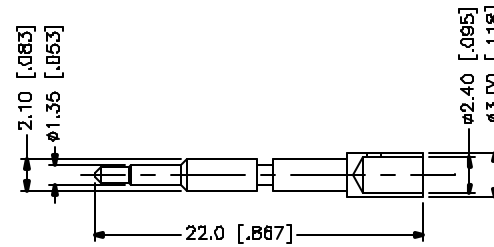
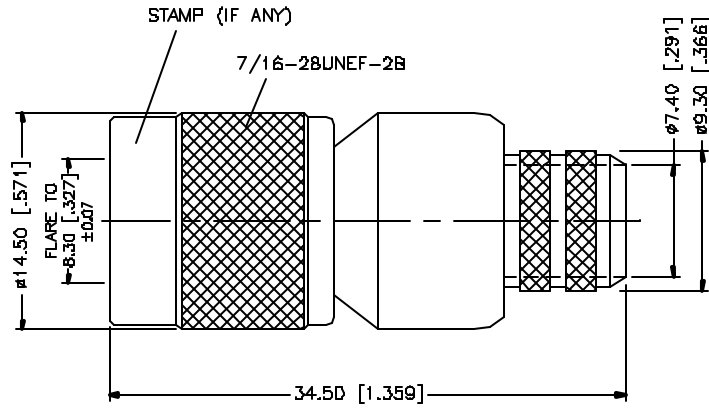
The content and copyrights of the attached
material are the property of its owner.

Jameco Part Number 658582

REV.	DATE	DESCRIPTION
NC	05/27/97	INITIAL RELEASE
A	05/01/04	UPDATE DRAWING FORMAT



RECOMMENDED CABLE STRIPPING DIMENSIONS



NOTE:

1. CRIMPED FERRULE
HEX CRIMP SIZE .429"
2. CRIMPED CONTACT PIN
HEX CRIMP SIZE .100"

8					<small>UNLESS OTHERWISE SPECIFIED DIMENSIONS ARE IN MILLIMETERS. DIMENSIONS IN [] ARE IN INCHES AND FOR CUSTOMER REFERENCE ONLY.</small> <small>UNLESS OTHERWISE SPECIFIED TOLERANCES FOR MILLIMETERS ARE:</small> 0.5 - 8mm ± 0.20mm 8 - 30mm ± 0.40mm 30 - 120mm ± 0.50mm <small>UNLESS OTHERWISE SPECIFIED TOLERANCES FOR INCHES ARE:</small> .020 - .315 = ± 0.007" .315 - 1.180 = ± 0.015" 1.180 - 4.724 = ± 0.020" DO NOT SCALE DRAWING	APPROVALS	DATE	<h1 style="color: blue; text-align: center;">Amphenol Connex</h1> <p style="text-align: center;">TNC CRIMP PLUG (FOR BELDEN 8/U, 213U)</p> <p style="text-align: center;">122394</p>	
8						DRAWN	G.R.S.		05/01/04
7						CHECKED			
6						ISSUED			
5						SHEET	1 OF 1		
4	FERRULE	COPPER	NICKEL	1		PART DESCRIPTION			
3	CONTACT PIN	BRASS	GOLD	1		PART NO.			
2	INSULATOR	TEFLON	NATURAL	1		122394			
1	BODY	BRASS	NICKEL	1	DWG. NO. 122394.DWG				
	DESCRIPTION	MATERIAL	FINISH	QTY	DWG. FILE C:/122/122394.DWG		REV. A	SIZE A	SCALE NA