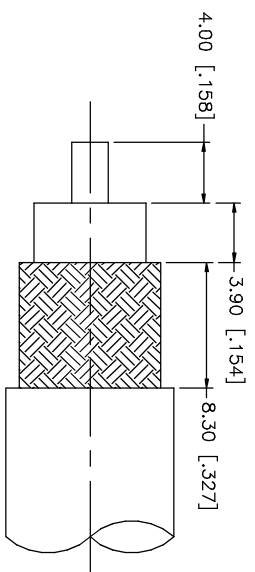
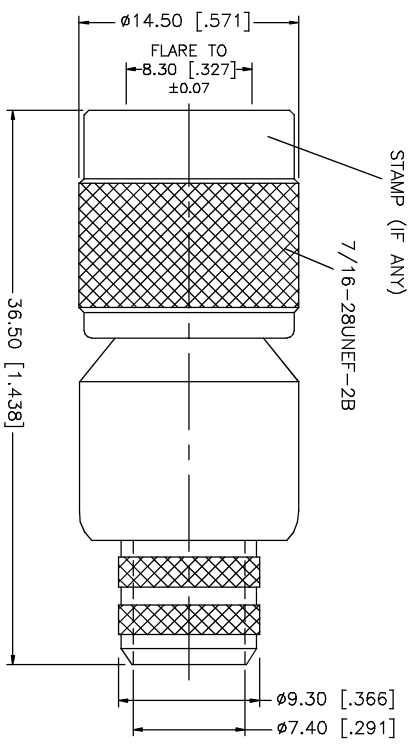


REV.	DATE	DESCRIPTION
A	08/28/98	REDIMENSION / MODIFY CONTACT DIMENSIONS
B	06/05/03	UPDATE DRAWING FORMAT

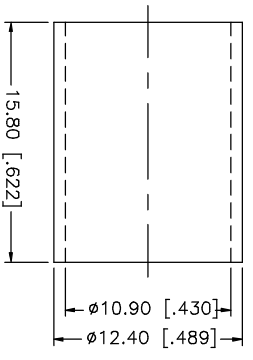
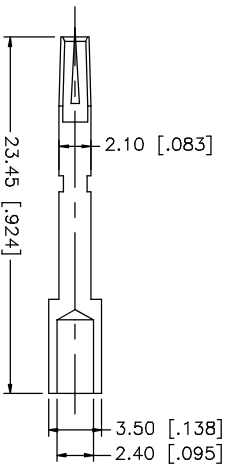


RECOMMENDED CABLE STRIPPING DIMENSIONS



STAMP (IF ANY)

7/16-28UNEF-2B



- NOTE:
1. CRIMPED FERRULE  
HEX CRIMP SIZE .429"
  2. CRIMPED CONTACT PIN  
HEX CRIMP SIZE .118"

QTY	FINISH	MATERIAL	DESCRIPTION
1	NICKEL	COPPER	FERRULE
1	GOLD	PHOS. BRONZE	CONTACT PIN
1	NATURAL	TEFLON	INSULATOR
1	NICKEL	BRASS	BODY
			DESCRIPTION

APPROVALS	DATE
DRAWN G.R.S.	06/05/03
CHECKED	
ISSUED	
SHEET 1 OF 1	

CAD FILE C:/122/122394RP.DWG		DWG. NO. 122394RP.DWG	REV. B	SIZE A	SCALE NA
------------------------------	--	-----------------------	--------	--------	----------

<p>UNLESS OTHERWISE SPECIFIED DIMENSIONS ARE IN MILLIMETERS, DIMENSIONS IN [ ] ARE IN INCHES AND FOR CUSTOMER REFERENCE ONLY.</p> <p>UNLESS OTHERWISE SPECIFIED TOLERANCES FOR MILLIMETERS ARE:</p> <p>0.5 - 8mm ± 0.20mm</p> <p>8 - 30mm ± 0.40mm</p> <p>30 - 120mm ± 0.50mm</p>		<p>UNLESS OTHERWISE SPECIFIED TOLERANCES FOR INCHES ARE:</p> <p>.020 - .315 = ± 0.007"</p> <p>.315 - 1.180 = ± 0.015"</p> <p>1.180 - 4.724 = ± 0.020"</p>	
---	--	---	--

<p><b>Amphenol Connex</b></p> <p>TNC REVERSE POLARITY CRIMP PLUG (FOR RG 8, 213/U CABLE)</p> <p>122394RP</p>	
--	--