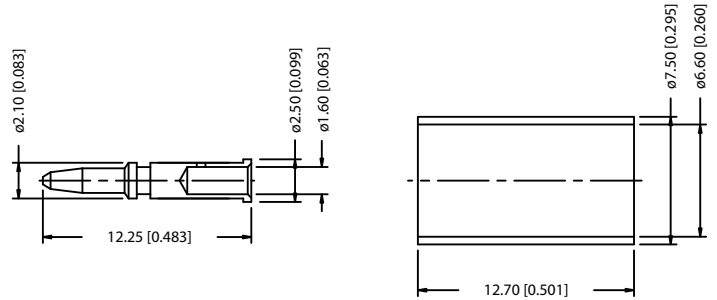
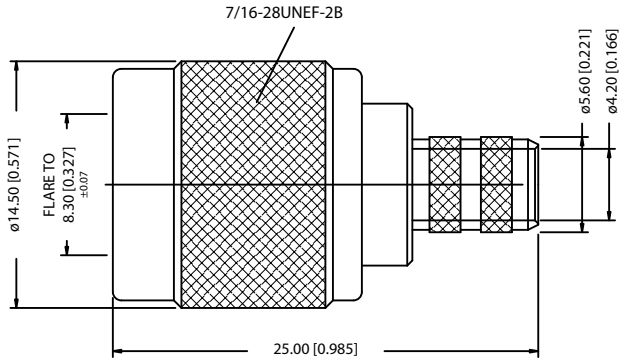
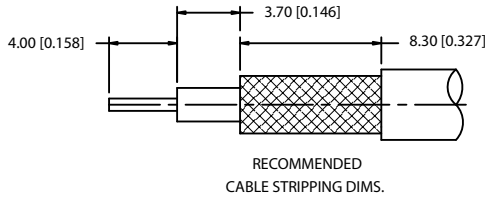


REV.	DATE	DESCRIPTION
B	07/15/03	CHANGE INSULATOR TO DELRIN



NOTE:

1. CRIMPED FERRULE
HEX CRIMP SIZE .255"
2. CRIMPED CONTACT PIN
HEX CRIMP SIZE .068"

8					<small>UNLESS OTHERWISE SPECIFIED DIMENSIONS ARE IN MILLIMETERS DIMENSIONS IN INCHES AND FOR CUSTOMER REFERENCE ONLY.</small> <small>UNLESS OTHERWISE SPECIFIED TOLERANCES FOR MILLIMETERS ARE:</small> 0.5 - 8mm ± 0.20mm 8 - 30mm ± 0.40mm 30 - 120mm ± 0.50mm <small>UNLESS OTHERWISE SPECIFIED TOLERANCES FOR INCHES ARE:</small> .020 - .315 = ± 0.007" .315 - 1.180 = ± 0.015" 1.180 - 4.724 = ± 0.020"	APPROVALS DRAWN G.R.S. DATE 07/15/03		<h1 style="text-align: center;">Amphenol - Connex</h1> <p style="text-align: center;">PART DESCRIPTION TNC STRAIGHT CRIMP PLUG (FOR LMR 240MA, BELDEN RG8X CABLE)</p> <p style="text-align: center;">PART NO. 122408</p>	
7				CHECKED ISSUED SHEET 1 OF 1					
6				CAD FILE C:/122/122408.DWG					
5				DWG. NO. 122408.DWG					
4	FERRULE	COPPER	NICKEL	1		REV. B	SIZE A		SCALE NA
3	CONTACT PIN	BRASS	GOLD	1					
2	INSULATOR	DELRIN	NATURAL	1					
1	BODY	BRASS	NICKEL	1					
	DESCRIPTION	MATERIAL	FINISH	QTY		DO NOT SCALE DRAWING			