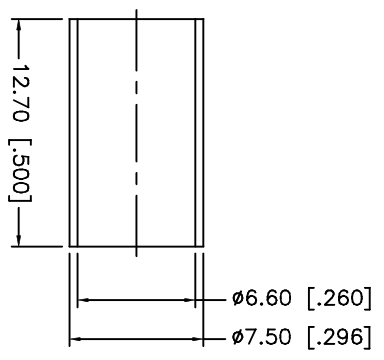
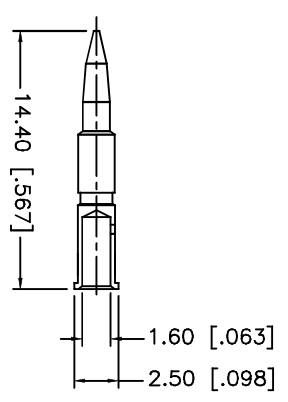
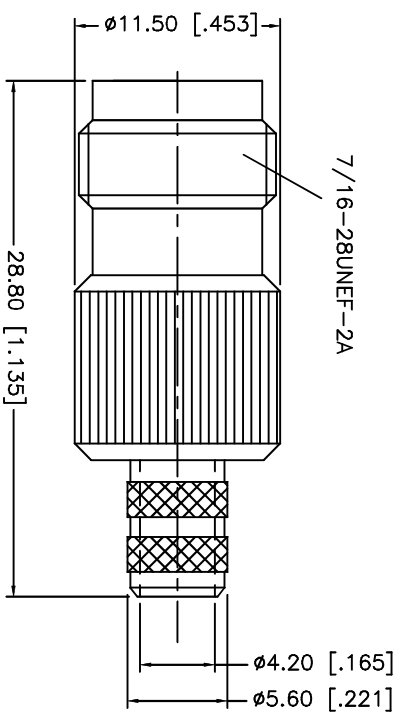
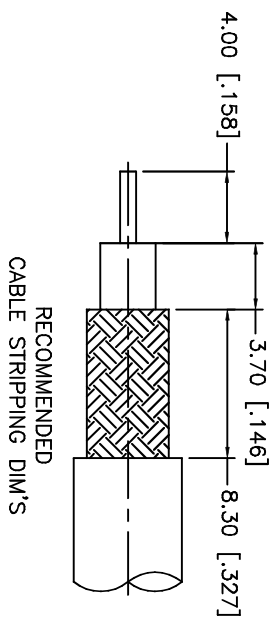


REV.	DATE	DESCRIPTION
NC	08/05/99	INITIAL RELEASE
A	07/20/05	UPDATE DRAWING FORMAT



DESCRIPTION	MATERIAL	FINISH	QTY	DO NOT SCALE DRAWING	APPROVALS	DATE	PART DESCRIPTION		
1	INSULATOR BRASS	NICKEL	1	UNLESS OTHERWISE SPECIFIED, DIMENSIONS ARE IN MILLIMETERS. DIMENSIONS IN [] ARE IN INCHES AND FOR CUSTOMER REFERENCE ONLY. UNLESS OTHERWISE SPECIFIED, TOLERANCES FOR MILLIMETERS ARE: 0.5 - .8mm ± 0.20mm .8 - .30mm ± 0.40mm .30 - 120mm ± 0.50mm UNLESS OTHERWISE SPECIFIED, TOLERANCES FOR INCHES ARE: .020 - .315 = ± 0.007" .315 - 1.180 = ± 0.015" 1.180 - 4.724 = ± 0.020"	DRAWN G.R.S.	07/20/05	Amphenol Connex TNC CRIMP JACK - REVERSE POLARIZED (FOR RG-8X, TIMES LMR-240 CABLE) PART NO. 122409RP		
2	CONTACT PIN TEFLON	NATURAL	1		CHECKED				
3	CONTACT PIN PHOS. BRONZE	GOLD	1		ISSUED				
4	FERRULE COPPER	NICKEL	1		SHEET	1 OF 1			
5									
6									
7									
8									
DESCRIPTION					CAD FILE C:/122/122409RP.DWG	DWG. NO. 122409RP.DWG	REV. A	SIZE A	SCALE NA