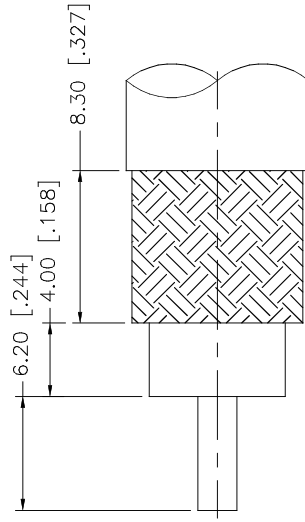
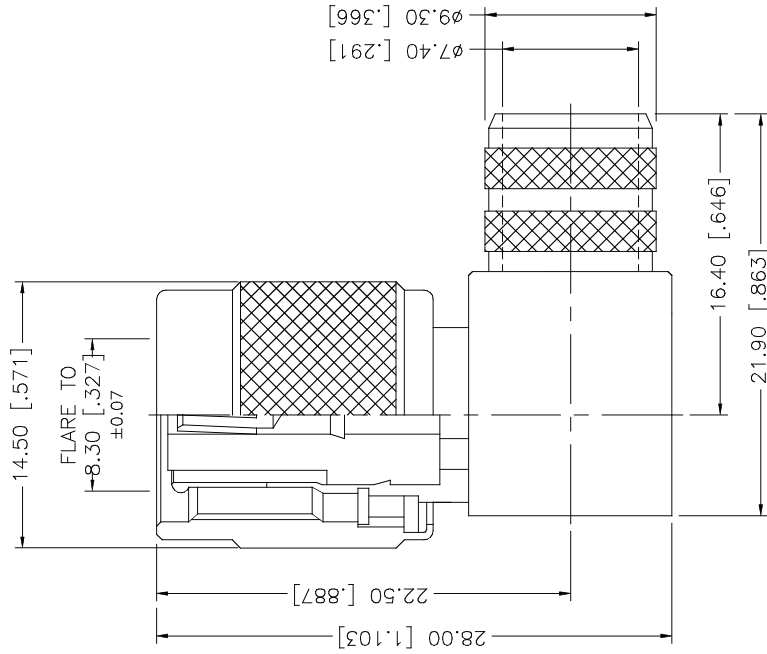
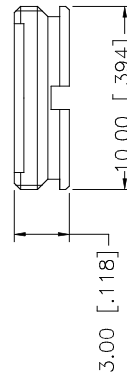


REV.	DATE	DESCRIPTION
NC	04/25/06	INITIAL RELEASE



RECOMMENDED
CABLE STRIPPING DIM'S



NOTE:
1. CRIMPED FERRULE – HEX CRIMP SIZE .429"

REV.	DATE	DESCRIPTION
NC	04/25/06	INITIAL RELEASE
<p style="text-align: center;">Amphenol Connex</p> <p style="text-align: center;">TNC REVERSE POLARITY R/A CRIMP PLUG (FOR RG-8/U, 213/U, LMR400, BELDEN 9913,9914)</p>		
PART DESCRIPTION		
TNC REVERSE POLARITY R/A CRIMP PLUG (FOR RG-8/U, 213/U, LMR400, BELDEN 9913,9914)		
PART NO. 122416RP		
DWG. NO.	REV.	SCALE
122416RP.DWG	NC	A
DO NOT SCALE DRAWING		
CAD FILE C:/122/122416RP.DWG		
UNLESS OTHERWISE SPECIFIED DIMENSIONS ARE IN MILLIMETERS. DIMENSIONS IN [] ARE IN INCHES AND FOR CUSTOMER REFERENCE ONLY.		
UNLESS OTHERWISE SPECIFIED TOLERANCES FOR MILLIMETERS ARE:		
0.5 – 8mm ± 0.20mm		
8 – 30mm ± 0.40mm		
30 – 120mm ± 0.50mm		
UNLESS OTHERWISE SPECIFIED TOLERANCES FOR INCHES ARE:		
.020 – .315 = ± 0.007"		
.315 – 1.180 = ± 0.015"		
1.180 – 4.724 = ± 0.020"		
APPROVALS	DATE	
DRAWN G.R.S.	04/25/06	
CHECKED		
ISSUED		
SHEET 1 OF 1		
DESCRIPTION	MATERIAL	FINISH
COVER	BRASS	NICKEL
FERRULE	COPPER	NICKEL
CONTACT PIN	PHOS. BRONZE	GOLD
INSULATOR	TEFLON	NATURAL
BODY	BRASS	NICKEL
QTY		
1		