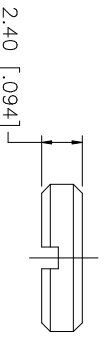
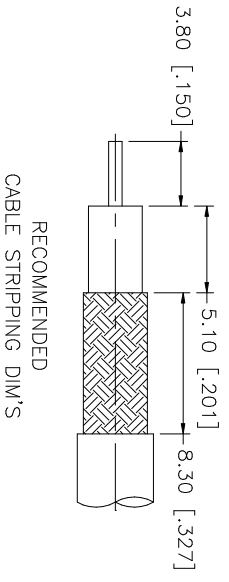
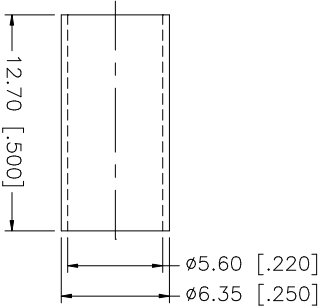
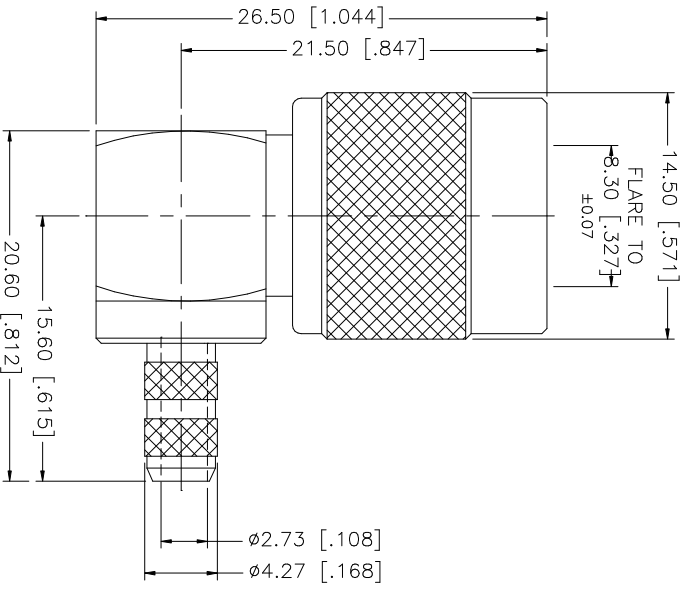


REV.	DATE	DESCRIPTION
A	04/31/03	UPDATE DRAWING FORMAT



NOTE:
1. CONTACT PIN TO SOLDER

9																			
8																			
7																			
6	NUT	BRASS	NICKEL	1															
5	FERRULE	COPPER	NICKEL	1															
4	GASKET	RUBBER	RED	1															
3	CONTACT PIN	BRASS	GOLD	1															
2	INSULATOR	TEFLON	NATURAL	1															
1	BODY/BARREL	BRASS	NICKEL	1															
	DESCRIPTION	MATERIAL	FINISH	QTY															
					UNLESS OTHERWISE SPECIFIED DIMENSIONS ARE IN MILLIMETERS. DIMENSIONS IN [] ARE IN INCHES AND FOR CUSTOMER REFERENCE ONLY. TOLERANCES FOR MILLIMETERS ARE: 0.5 - 8mm ± 0.20mm 8 - 30mm ± 0.40mm 30 - 120mm ± 0.50mm					UNLESS OTHERWISE SPECIFIED DIMENSIONS ARE IN INCHES AND FOR CUSTOMER REFERENCE ONLY. TOLERANCES FOR INCHES ARE: .020 - .315 = ± 0.007" .315 - 1.180 = ± 0.015" 1.180 - 4.724 = ± 0.020"					CAD FILE C:/122/122430.DWG				
					APPROVALS					DATE									
					DRAWN G.R.S.					04/31/03									
					CHECKED														
					ISSUED														
					SHEET 1 OF 1														
					PART NO. 122430														
					PART DESCRIPTION TNC R/A CRIMP PLUG (FOR RG-55/U, 142A/U, 223/U, 400/U)														
					DWG. NO. 122430.DWG														
					REV. A														
					SIZE A														
					SCALE NA														

Amphenol Connex